



Wrangler®

AUTUMN WINTER 2026

PRODUCT GUIDE

Wrangler®



Brodie Hat (Chestnut) X6W1961HAT,
Roy Stripe Western Button Down Long Sleeve
Shirt X6W1111487, Memphis Belt X6W1965BLT, Retro®
Slim Straight Jean 88MWZJM34 - 34" LEG

AUTUMN WINTER 2026 PRODUCT GUIDE

WORN TO WIN

Please note: Standard Thomas Cook Boot & Clothing Co. trading terms and conditions apply. All retail prices advertised throughout this book include GST and are subject to change with or without notification. Please note that colours may vary slightly in this catalogue to actual product.

Original garment and product designs are the intellectual property of Thomas Cook Boot & Clothing Co. Pty Ltd and are subject to copyright.

Published March 2026

Photography by Laura Neumeister.

Cover Image: She wears: Brodie Hat (Chestnut) X6W1961HAT, Marilyn Print Long Sleeve Shirt X6W2126558, Florence Belt X6W2985BLT, Brianna Trouser Jean - Willow XCP2253533 - 34" LEG. He wears: Montana Hat XCP1956HAT, Ruben Jacket X6W1771521, 20X® Competition Relaxed Jean (River Wash) 01MWXRW34 - 34" LEG. **Back Cover Image:** Brodie Hat (Silverton) XCP1961HAT, Scarlet Long Sleeve Shirt X6W2143264, Florence Belt X6W2985BLT, Laura High Rise Boot Cut Jean - Bailey XCP2255534 - 34" LEG

Special thanks to Penny and Steve Mayne for the use of their beautiful property in Woodstock, Victoria for the adults location. As well as thanks to Paula Scully of Totoka Lodge for the kids photoshoot location.



Wrangler
EST. 1873



WOMEN'S

Page 2

MEN'S

Page 38



GIRLS

Page 74



BOYS

Page 82



Page 90

ACCESSORIES





Brodie Hat (Chestnut) X6W1961HAT,
Louise Long Sleeve Shirt X6W2127265,
Savannah Belt X6W2989BLT, Chloe High
Rise Wide Leg Jean XCP2258580 - 30"LEG



WOMEN'S

Landon Hat (Silverton)
 XCP1955HAT, Bella Crew
 X6W2539550, Brianna
 Trouser Jean - Willow
 XCP2253533 - 34" LEG





Brodie Hat (Silverton) XCP1961HAT,
Lilly Long Sleeve Shirt X6W2127434,
Florence Belt X6W2985BLT, Chloe High
Rise Wide Leg Jean XCP2258580 - 30"LEG



BACK NECK LOGO EMBROIDERY



ORIGINAL HAND DRAWN FLORAL EMBROIDERY



EXTRA SNAP AT BUST



DENIM

Women's Louise Long Sleeve Shirt

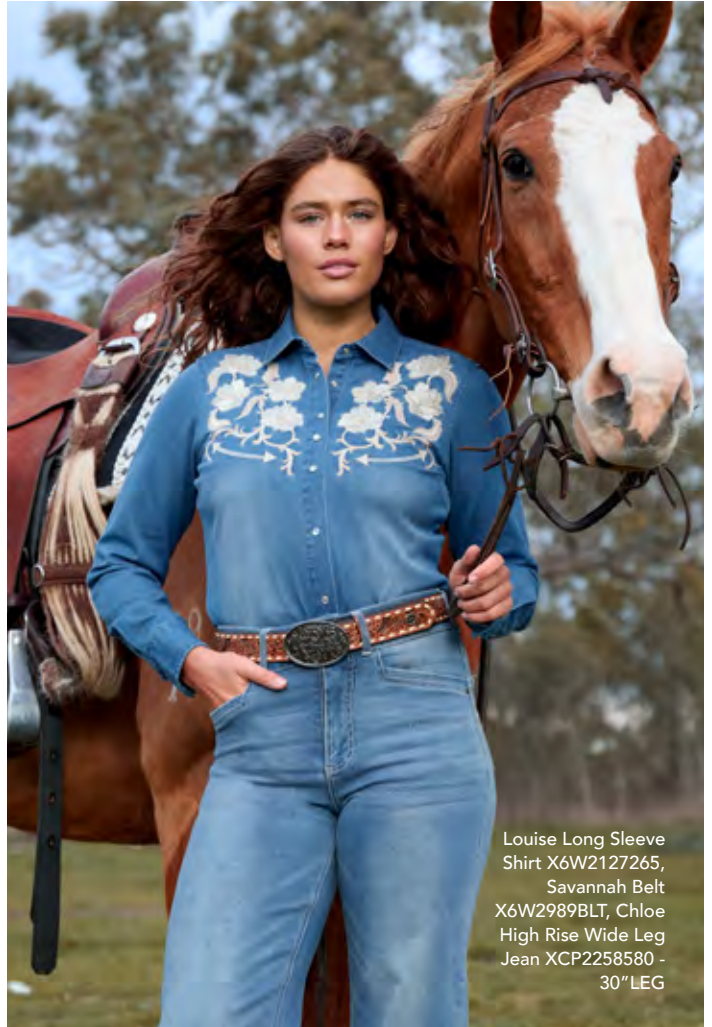
X6W2127265

8, 10, 12, 14, 16, 18, 20, 22

100% Cotton

Western denim long sleeve shirt, pearl snap closure, western back yoke, Wrangler® logo pip on side seam

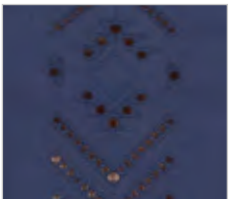
\$159.95 AUD, \$192.95 NZD



Louise Long Sleeve Shirt X6W2127265, Savannah Belt X6W2989BLT, Chloe High Rise Wide Leg Jean XCP2258580 - 30" LEG



BACK NECK LOGO EMBROIDERY



HAND DRAWN AZTEC EMBROIDERED FABRIC



EXTRA BUTTON AT BUST



NAVY

Women's Lilly Long Sleeve Shirt

X6W2127434

8, 10, 12, 14, 16, 18, 20, 22

100% Cotton

Fashion style button down long sleeve shirt, puff sleeve detail with gathered sleeve head, front lining, button closure, Wrangler® logo pip on side seam

\$139.95 AUD, \$167.95 NZD



BACK NECK LOGO EMBROIDERY



METALLIC YARN DYED CHECK



EXTRA SNAP AT BUST



IVORY/PINK

Women's Henley Check Western Long Sleeve Shirt

X6W2129562

8, 10, 12, 14, 16, 18, 20, 22

99% Cotton / 1% Metallic Yarn Dyed Check

Fashion style western long sleeve shirt, puff sleeve detail with gathered sleeve head, pearl snap closure, western front and back yokes with contrast corded piping, gathering detail at sleeve cuff, Wrangler® logo pip on side seam

\$109.95 AUD, \$129.95 NZD



Brodie Hat
(Chestnut)
X6W1961HAT,
Marilyn Print
Long Sleeve Shirt
X6W2126558,
Florence Belt
X6W2985BLT,
Brianna Trouser
Jean - Willow
XCP2253533 -
34" LEG



BACK NECK
LOGO PRINT



ORIGINAL HAND
DRAWN NOVELTY PRINT



EXTRA BUTTON
AT BUST



IVORY

**Women's Marilyn Print
Long Sleeve Shirt**

X6W2126558

8, 10, 12, 14, 16, 18, 20, 22

100% Viscose

Classic button down long sleeve shirt, button closure, Wrangler® logo pip on side seam, soft handfeel and drape

\$109.95 AUD, \$129.95 NZD



Brodie Hat (Silverton)
XCP1961HAT, Jaclyn Check
Western Long Sleeve Shirt
X6W2127560, Emmaline Belt
X6W2988BLT, Laura High
Rise Boot Cut Jean - Bailey
XCP2255534 - 34" LEG



BACK NECK LOGO
EMBROIDERY



YARN DYED
CHECK



EXTRA SNAP
AT BUST



BERRY

**Women's Jaclyn
Check Western
Long Sleeve Shirt**

X6W2127560

8, 10, 12, 14, 16, 18, 20, 22

100% Cotton Yarn
Dyed Check

Classic western long sleeve shirt, pearl snap closure, western chest pockets, western front and back yokes, Wrangler® logo pip on side seam

\$109.95 AUD, \$129.95 NZD



Brodie Hat (Silverton) XCP1961HAT, Jewell Check Western Long Sleeve Shirt X6W2127563, Savannah Belt X6W2989BLT, Laura High Rise Boot Cut Jean - Bailey XCP2255534 - 34" LEG



BACK NECK LOGO EMBROIDERY



ORIGINAL HAND DRAWN PAISLEY PRINT



EXTRA SNAP AT BUST



NAVY

Women's Bronx Print Western Long Sleeve Shirt

X6W2127561

8, 10, 12, 14, 16, 18, 20, 22

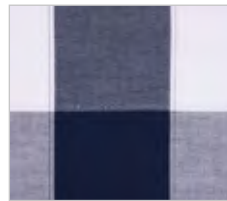
100% Cotton

Classic western long sleeve shirt, pearl snap closure, western chest pockets, western front and back yokes, Wrangler® logo pip on side seam

\$109.95 AUD, \$129.95 NZD



BACK NECK LOGO EMBROIDERY



YARN DYED CHECK



EXTRA BUTTON AT BUST



NAVY

Women's Jewell Check Western Long Sleeve Shirt

X6W2127563

8, 10, 12, 14, 16, 18, 20, 22

99% Cotton / 1% Metallic Yarn Dyed Check

Classic western long sleeve shirt, button closure, western chest pockets, western front and back yokes, Wrangler® logo pip on side seam

\$109.95 AUD, \$129.95 NZD



 **Wrangler**
FLEX TECHNOLOGY
← STRETCH →

WORK SHIRT

CLASSIC WESTERN SHIRT WITH OVERALL STRETCH FOR COMFORT AND MOVEMENT

Brodie Hat (Chestnut) X6W1961HAT, Bridget Western Long Sleeve Shirt (Navy) X6W2127462, Maeve Belt X6W2987BLT, Brianna Trouser Jean - Willow XCP2253533 - 34" LEG



Lin High Profile Trucker Cap X6W2940CAP,
Bridget Western Long Sleeve Shirt (Cream)
X6W2127462, Emmaline Belt X6W2988BLT,
Laura High Rise Boot Cut Jean - Bailey
XCP2255534 - 34" LEG

Women's Bridget Western Long Sleeve Shirt

X6W2127462

8, 10, 12, 14, 16, 18, 20, 22

97% Cotton / 3% Elastane Sateen

Classic western long sleeve shirt, stretch for comfort and movement, pearl snap closure, western front and back yokes with contrast piping, Wrangler® logo pip on side seam



\$139.95 AUD, \$167.95 NZD



NAVY



CREAM



BACK NECK LOGO EMBROIDERY



RIGHT CUFF EMBROIDERY



EXTRA SNAP AT BUST



TIME FOR HEADING OUT

WHETHER YOU'RE OUT ON THE TOWN OR LINE DANCING WITH YOUR FAVOURITE LADIES, OUR WESTERN-INSPIRED STYLES WILL HAVE YOU FEELING JUST AS GOOD AS YOU LOOK.



BACK NECK LOGO EMBROIDERY



RIGHT CUFF EMBROIDERY



EXTRA SNAP AT BUST



PINK



HAND DRAWN AZTEC & STEERHEAD EMBROIDERY



FRONT HEM LOGO EMBROIDERY



BLACK

Women's Scarlet Long Sleeve Shirt

X6W2143264

8, 10, 12, 14, 16, 18, 20, 22

100% Polyester

Fashion style western long sleeve shirt, puff sleeve detail with gathered sleeve head, pearl snap closure, western front and back yokes, Wrangler® logo pip on side seam, soft handfeel and drape

\$109.95 AUD, \$129.95 NZD

Women's Lucille Long Sleeve Blouse

X6W2513556

8, 10, 12, 14, 16, 18, 20, 22

100% Viscose Crepe

Long sleeve blouse, V-neck opening with self fabric covered buttons and front tie with tassel detail, ladder lace detail at chest and back yokes, elasticated sleeve cuffs, Wrangler® logo pip on side seam, soft handfeel and drape

\$149.95 AUD, \$181.95 NZD



NEW STYLE

Brodie Hat (Silverton) XCP1961HAT, Scarlet Long Sleeve Shirt X6W2143264, Emmaline Belt X6W2988BLT, Laura High Rise Boot Cut Jean - Bailey XCP2255534 - 34" LEG



Roxana Long Sleeve Blouse X6W2541555,
Alyssa Belt X6W2986BLT, Laura High Rise Boot
Cut Jean - Bailey XCP2255534 - 34" LEG

**Women's Roxana Long
Sleeve Blouse**

X6W2541555

8, 10, 12, 14, 16, 18, 20, 22

100% Viscose Crepe

Long sleeve blouse, Wrangler®
logo pip on side seam, soft
handfeel and drape

\$129.95 AUD, \$158.95 NZD

COPPER



FRONT YOKE AZTEC
EMBROIDERY



SLEEVE AZTEC
EMBROIDERY



FRONT HEM LOGO
EMBROIDERY



FRONT YOKE PAISLEY EMBROIDERY



TEXTURED FABRIC



FRONT HEM LOGO EMBROIDERY



BLUSH

Women's Elissa Long Sleeve Blouse

X6W2541191

8, 10, 12, 14, 16, 18, 20, 22
100% Viscose

Long sleeve blouse, v-neck opening with front tie with tassel detail, ladder lace detail (at chest, back and sleeves), elasticated sleeve cuffs, Wrangler® logo pip on side seam, soft handfeel and drape

\$149.95 AUD, \$181.95 NZD



BACK NECK LOGO EMBROIDERY



TEXTURED FABRIC



HEM EDGE LACE DETAIL



NAVY

Women's Melissa Long Sleeve Dress

X6W2405450

8, 10, 12, 14, 16, 18, 20, 22
100% Cotton

Chambray long sleeve dress, v-neck opening with front tie detail, pearl button closure front, Shirred detail at waist and cuff, pockets at side seams, Wrangler® logo pip on side seam, soft hand feel and drape

\$175.95 AUD, \$211.95 NZD



BACK NECK LOGO EMBROIDERY



CHEST POCKETS WITH WESTERN STITCHING



WESTERN FRONT AND BACK YOKE



MOOD INDIGO

Women's Wendy Denim Dress

X6W2460530

8, 10, 12, 14, 16, 18, 20, 22
100% Cotton

Western denim long sleeve shirt dress, pearl snap closure, western front and back yokes, pockets at side seams, Wrangler® logo pip on side seam, waist belt tie detail

\$139.95 AUD, \$167.95 NZD



Landon Hat (Silverton)
XCP1955HAT,
Wendy Denim Dress
X6W2460530



Landon Hat (Silverton) XCP1955HAT, Piper Short Sleeve Tee X6W2598471, Dillen High Rise Jean - Bailey XCP2255465 - 34" LEG



BACK NECK LOGO PRINT



HAND DRAWN LOGO PRINT WITH METALLIC DETAIL



NAVY



BACK NECK LOGO PRINT



HAND DRAWN LOGO PRINT



COPPER

Women's Piper Short Sleeve Tee

X6W2598471

8, 10, 12, 14, 16, 18, 20, 22

100% Cotton Jersey, 180gsm

Classic tee shape, rib neck band, Wrangler® logo pip on side seam

\$69.95 AUD, \$84.95 NZD

Women's Sheena Short Sleeve Tee

X6W2598535

8, 10, 12, 14, 16, 18, 20, 22

100% Cotton Jersey, 180gsm

Classic tee shape, rib neck band, Wrangler® logo pip on side seam

\$69.95 AUD, \$84.95 NZD



BACK NECK LOGO PRINT



HAND DRAWN LOGO PRINT



CREAM

Women's Vanessa Short Sleeve Tee

Classic tee shape, rib neck band, Wrangler® logo pip on side seam

X6W2598540

8, 10, 12, 14, 16, 18, 20, 22

100% Cotton Jersey, 180gsm

\$69.95 AUD, \$84.95 NZD



BACK NECK LOGO PRINT



HAND DRAWN LOGO PRINT AND EMBROIDERY



NAVY

Women's Natasha Short Sleeve Tee

Classic tee shape, rib neck band, Wrangler® logo pip on side seam

X6W2598537

8, 10, 12, 14, 16, 18, 20, 22

100% Cotton Jersey, 180gsm

\$69.95 AUD, \$84.95 NZD



BACK NECK LOGO PRINT



HAND DRAWN LOGO PRINT WITH METALLIC DETAIL



KHAKI MARLE

Women's Adriana Short Sleeve Tee

Classic tee shape, rib neck band, Wrangler® logo pip on side seam

X6W2598538

8, 10, 12, 14, 16, 18, 20, 22

60% Cotton / 40% Polyester Jersey, 180gsm

\$69.95 AUD, \$84.95 NZD



Adriana Short Sleeve Tee X6W2598538, Landon Hat (Silverton) XCP1955HAT



Francis High Profile Ponytail Trucker Cap X6W2936CAP, Piper Stripe Rugby X6W2577546, Brianna Trouser Jean - Willow XCP2253533 - 34" LEG



BACK NECK LOGO EMBROIDERY



FRONT FEATURE LOGO EMBROIDERY AND PRINT



NAVY/LIGHT BLUE

Women's Piper Stripe Rugby

X6W2577546

8, 10, 12, 14, 16, 18, 20, 22

100% Cotton Rugby Jersey Yarn Dyed Stripe, Peached, 330gsm

Heavyweight jersey knit rugby, concealed buttons on centre front placket, cotton drill collar, Wrangler® iconic logo herringbone tape on back neck and inside side seam splits, rib trim cuffs

\$139.95 AUD, \$167.95 NZD



BACK NECK LOGO EMBROIDERY



CHEST LOGO METALLIC EMBROIDERY



PINK/NAVY

Women's Hollie Stripe Rugby

X6W2577544

8, 10, 12, 14, 16, 18, 20, 22

100% Cotton Rugby Jersey Yarn Dyed Stripe, Peached, 330gsm

Heavyweight jersey knit rugby, concealed buttons on centre front placket, cotton drill collar, Wrangler® iconic logo herringbone tape on back neck and inside side seam splits, rib trim cuffs

\$139.95 AUD, \$167.95 NZD



BACK NECK LOGO EMBROIDERY



FRONT FEATURE LOGO EMBROIDERY



BLUE/PINK

Women's Easton Stripe Rugby

X6W2577545

8, 10, 12, 14, 16, 18, 20, 22

100% Cotton Rugby Jersey Yarn Dyed Stripe, Peached, 330gsm

Heavyweight jersey knit rugby, concealed buttons on centre front placket, cotton drill collar, Wrangler® iconic logo herringbone tape on back neck and inside side seam splits, rib trim cuffs

\$139.95 AUD, \$167.95 NZD



Erinn High Profile Ponytail Trucker Cap X6W2939CAP,
Luella Stripe Rugby X6W2577543, Brianna Trouser
Jean - Willow XCP2253533 - 34" LEG



BACK NECK LOGO
EMBROIDERY



FRONT FEATURE
LOGO APPLIQUÉ
AND EMBROIDERY



GREEN/PINK

**Women's Luella
Stripe Rugby**

X6W2577543

8, 10, 12, 14, 16, 18, 20, 22
100% Cotton Rugby
Jersey Yarn Dyed Stripe,
Peached, 330gsm

Heavyweight jersey knit rugby,
concealed buttons on centre front
placket, cotton drill collar, Wrangler®
iconic logo herringbone tape on back
neck and inside side seam splits, rib
trim cuffs

\$139.95 AUD, \$167.95 NZD



BACK NECK LOGO
EMBROIDERY



FRONT FEATURE
METALLIC DETAIL
LOGO APPLIQUÉ
AND EMBROIDERY



NAVY/LIGHT BLUE

Women's Brooke Rugby

X6W2577541

8, 10, 12, 14, 16, 18, 20, 22
100% Cotton Rugby
Jersey, Peached, 330gsm

Heavyweight jersey knit rugby,
concealed buttons on centre front
placket, chambray collar, Wrangler®
iconic logo herringbone tape on back
neck and inside side seam splits, rib
trim cuffs

\$139.95 AUD, \$167.95 NZD



Montana Hat XCP1956HAT,
Mallory Crew X6W2527551,
Brianna Trouser Jean - Willow
XCP2253533 - 34" LEG



Bella Crew X6W2539550,
Brianna Trouser Jean - Willow
XCP2253533 - 34" LEG



BACK NECK
LOGO PRINT



HAND DRAWN
PRINT



FRONT HEM
LOGO PRINT



ROSE

Women's Mallory Crew

X6W2527551

8, 10, 12, 14, 16, 18, 20, 22

80% Cotton /
20% Polyester Brushed
Fleece, 320gsm

Heavyweight brushed fleece crew,
Wrangler® iconic logo herringbone
tape on back neck, rib trim hem and
cuff detail, Wrangler® logo pip on
side seam

\$129.95 AUD, \$158.95 NZD



BACK NECK LOGO
EMBROIDERY



FRONT FEATURE
EMBROIDERY



NAVY

Women's Bella Crew

X6W2539550

8, 10, 12, 14, 16, 18, 20, 22

80% Cotton /
20% Polyester Brushed
Fleece, 320gsm

Heavyweight brushed fleece crew,
Wrangler® iconic logo herringbone
tape on back neck, rib trim hem and
cuff detail, Wrangler® logo pip on
side seam

\$129.95 AUD, \$158.95 NZD



Dana 1/4 Zip Pullover
X6W2597549, Laura High
Rise Boot Cut Jean - Bailey
XCP2255534 - 34" LEG



BACK NECK LOGO
EMBROIDERY



FRONT FEATURE
LOGO BOUCLÉ
APPLIQUÉ AND
EMBROIDERY



NAVY/TEAL

**Women's Dana
1/4 Zip Pullover**

X6W2597549

8, 10, 12, 14, 16, 18, 20, 22

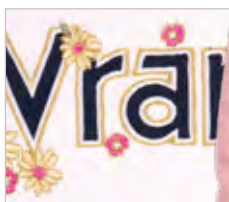
80% Cotton /
20% Polyester, Brushed
Fleece, 320gsm

Heavyweight brushed fleece 1/4 zip pullover, cut'n'sew contrast panelling, Wrangler® iconic logo herringbone tape on back neck, rib trim hem and cuffs, Wrangler® logo pip on side seam

\$139.95 AUD, \$167.95 NZD



BACK NECK
LOGO PRINT



FRONT FEATURE
LOGO APPLIQUÉ
AND EMBROIDERY



ROSE/NAVY



BACK NECK METALLIC
LOGO PRINT



FRONT FEATURE
LOGO PRINT AND
EMBROIDERY WITH
METALLIC DETAIL



NAVY

**Women's Brooke
Pullover Hoodie**

X6W2597541

8, 10, 12, 14, 16, 18, 20, 22

80% Cotton /
20% Polyester Brushed
Fleece, 320gsm

Heavyweight brushed fleece pullover, cut'n'sew contrast panelling, hood with drawcord and branded metal trims, front kanga patch pocket, Wrangler® iconic logo herringbone tape on back neck, rib trim hem and cuffs, Wrangler® logo pip on side seam

\$129.95 AUD, \$155.95 NZD

**Women's Piper
Pullover Hoodie**

X6W2587554

8, 10, 12, 14, 16, 18, 20, 22

80% Cotton /
20% Polyester Brushed
Fleece, 320gsm

Heavyweight brushed fleece pullover, front kanga patch pocket, rib trim hem and cuffs, Wrangler® logo pip on side seam

\$129.95 AUD, \$155.95 NZD



Hailey Oversized Pullover Hoodie
 X6W2546548, Brianna Trouser Jean -
 Willow XCP2253533 - 34" LEG

OLIVE

**Women's Hailey
 Oversized Pullover
 Hoodie**

X6W2546548

8, 10, 12, 14, 16, 18, 20, 22

80% Cotton /
 20% Polyester, Brushed
 Fleece, 320gsm

Heavyweight brushed oversized
 fleece pullover, stripe detail,
 contrast hood lining, hood with
 drawcord and branded metal
 trims, rib trim hem and cuffs,
 Wrangler® logo pip on side seam

\$139.95 AUD, \$167.95 NZD



FRONT FEATURE
 BOUCLÉ APPLIQUÉ
 AND EMBROIDERY





WESTERN INSPIRED KNITS

WHETHER YOU'RE READY TO RIDE OFF INTO THE SUNSET OR KICK BACK AND RELAX, OUR WOMEN'S JAQUARD KNITS ARE CRAFTED FOR COMFORT AND WARMTH. COZY UP WITH A KNIT CARDIGAN OR FLEECE PULLOVER WITH AZTEC PLACEMENT DESIGNS, WITH A BRUSHED FINISH FOR EXTRA SOFTNESS.

Brodie Hat (Silverton) XCP1961HAT, Lacey Knitted
1/4 Zip Pullover X6W2518578 Chloe High Rise
Wide Leg Jean XCP2258580 - 30"LEG



Sasha High Profile Trucker Cap X6W2941CAP,
Janey Knitted Pullover X6W2542577, Brianna
Trousler Jean - Willow XCP2253533 - 34" LEG



KNITTED AZTEC
PLACEMENT DESIGN



FRONT HEM METALLIC
LOGO EMBROIDERY



NAVY

**Women's Lacey
Knitted 1/4 Zip Pullover**

X6W2518578

8, 10, 12, 14, 16, 18, 20, 22

65% Acrylic /
24% Polyester / 8% Wool /
3% Elastane, 7 Gauge

Fully fashion knitted 1/4 zip neck
jumper, knitted Aztec placement
design on body and sleeves, rib
trim (on collar, sleeve cuffs and hem
edge), Wrangler® logo pip on side
seam

\$159.95 AUD, \$192.95 NZD



KNITTED AZTEC
PLACEMENT DESIGN



FRONT HEM
LOGO EMBROIDERY



PINK

**Women's Janey
Knitted Pullover**

X6W2542577

8, 10, 12, 14, 16, 18, 20, 22

65% Acrylic /
24% Polyester / 8% Wool /
3% Elastane, 7 Gauge

Fully fashion knitted crew neck
jumper, knitted Aztec placement
design on body and sleeves, rib trim
(on neck, sleeve cuffs and hem edge),
Wrangler® logo pip on side seam

\$139.95 AUD, \$167.95 NZD



Kate Beanie X6W2959BEA,
Vanessa Short Sleeve Tee
X6W2598540, Fiona Knitted
Cardigan X6W2533575
Brianna Trouser Jean - Willow
XCP2253533 - 34" LEG

BLACK/TAN

**Women's Fiona
Knitted Cardigan**

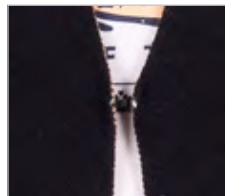
X6W2533575

XS, S, M, L, XL, XXL, 3XL

50% Viscose /
28% Polyester /
22% Nylon, 12 Gauge

Fully fashion knitted cardigan, longer line style, knitted Aztec placement design on body and sleeves, front patch pockets, Wrangler® logo pip on side seam

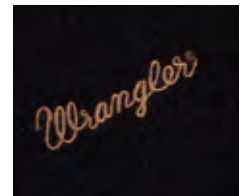
\$199.95 AUD, \$238.95 NZD



FRONT HOOK AND
EYE CLOSURE



KNITTED AZTEC
PLACEMENT DESIGN



FRONT HEM
LOGO EMBROIDERY



SHAKE OFF THE COLD VESTS AND JACKETS

JUST WHAT EVERY COWGIRL NEEDS IN HER COLD-WEATHER WARDROBE. OUR RANGE OF VESTS AND JACKETS MAKES IT EASY TO WARM UP YOUR LOOK WITHOUT SACRIFICING STYLE. LAYER THEM OVER A GRAPHIC T-SHIRT AND ADD YOUR BEST WRANGLER® JEANS AND SOME COWGIRL BOOTS FOR AN UNDENIABLY WESTERN WINTER LOOK.

Landon Hat (Silverton) XCP1955HAT, Vanessa Short Sleeve Tee X6W2598540, Dixie Jacket X6W2701568, Brianna Trouser Jean - Willow XCP2253533 - 34" LEG



Landon Hat (Silverton) XCP1955HAT,
Darla Vest X6W2694566, Bella Crew
X6W2539550, Brianna Trouser Jean -
Willow XCP2253533 - 34" LEG

Women's Darla Vest

X6W2694566

XS, S, M, L, XL, XXL, 3XL

Shell: 90% Polyester / 10% Wool,
Yarn Dyed Check

Lining: 100% Polyester



Midweight quilted vest, front storm flap with concealed zip closure and metal snaps, side welt pockets (lined for warmth), rust proof metal trims



BLUE/CLAY



INTERNAL FLEECE
BODY LINING



CHEST METALLIC
LOGO EMBROIDERY



HEM LOGO MOCK
LEATHER BADGE

\$199.95 AUD, \$238.95 NZD



Darla Shirt Jacket X6W2776567, Piper Short Sleeve Tee X6W2598471, Laura High Rise Boot Cut Jean - Bailey XCP2255534 - 34" LEG

Women's Darla Shirt Jacket

X6W2776567

XS, S, M, L, XL, XXL, 3XL

Shell: 90% Polyester / 10% Wool, Yarn Dyed Check

Lining: 100% Polyester



Classic lumberjack style midweight jacket, front metal zip closure, chest pockets, side welt pockets (lined for warmth), rust proof metal trims



BLUE/CLAY



INTERNAL FLEECE BODY LINING



HEM LOGO MOCK LEATHER BADGE

\$269.95 AUD, \$326.95 NZD



Brodie Hat (Chestnut) X6W1961HAT, Dixie Reversible Denim Vest X6W2602570, Bella Crew X6W2539550, Brianna Trouser Jean - Willow XCP2253533 - 34" LEG



Dixie Reversible Denim Vest X6W2602570, Bella Crew X6W2539550, Brianna Trouser Jean - Willow XCP2253533 - 34" LEG

Women's Dixie Reversible Denim Vest

X6W2602570

XS, S, M, L, XL, XXL, 3XL

Shell: 100% Cotton

Lining: 100% Polyester



Midweight reversible denim vest, sherpa collar for comfort and warmth, front closure with metal snaps, side panels for shaping, side welt pockets, rust proof metal trims

\$199.95 AUD, \$238.95 NZD



DENIM/MULTI



CHEST LOGO EMBROIDERY



INTERNAL JACQUARD AZTEC LINING



HEM LOGO MOCK LEATHER BADGE



Landon Hat (Silverton)
XCP1955HAT, Vanessa Short
Sleeve Tee X6W2598540,
Dixie Jacket X6W2701568,
Brianna Trouser Jean - Willow
XCP2253533 - 34" LEG



Landon Hat (Silverton)
XCP1955HAT,
Vanessa Short Sleeve
Tee X6W2598540,
Dixie Jacket
X6W2701568, Brianna
Trouser Jean - Willow
XCP2253533 - 34"
LEG

Women's Dixie Jacket

X6W2701568

XS, S, M, L, XL, XXL, 3XL

Shell: 100% Cotton

Lining: 100% Polyester



Midweight reversible denim jacket, sherpa collar for comfort and warmth, front closure with metal snaps, side panels for shaping, side welt pockets, rust proof metal trims



DENIM/MULTI



CHEST LOGO EMBROIDERY



INTERNAL JACQUARD AZTEC LINING



HEM LOGO MOCK LEATHER BADGE

\$259.95 AUD, \$309.95 NZD



Marta Reversible Jacket X6W2790572, Brianna
Trousler Jean - Willow XCP2253533 - 34" LEG



CHEST METALLIC
LOGO EMBROIDERY



NAVY/PINK

**Women's Marta
Reversible Vest**

X6W2694573

XS, S, M, L, XL, XXL, 3XL

Shell: 100% Polyester

Lining: 100% Polyester

Midweight reversible vest, internal plush fur lining for comfort and warmth, quilted front and back panels, front metal zip closure, side panels for shaping, side welt pockets with concealed zipper closure (lined for warmth), longer curved back hem

\$184.95 AUD, \$219.95 NZD



CHEST METALLIC
LOGO EMBROIDERY



NAVY/PINK

**Women's Marta
Reversible Jacket**

X6W2790572

XS, S, M, L, XL, XXL, 3XL

Shell: 100% Polyester

Lining: 100% Polyester

Midweight reversible jacket, internal plush fur lining for comfort and warmth, quilted front and back panels, front metal zip closure, side panels for shaping, side welt pockets with concealed zipper closure (lined for warmth), longer curved back hem

\$245.95 AUD, \$293.95 NZD



Eden Jacket X6W2540553, Laura High Rise Boot Cut Jean - Bailey XCP225534 - 34" LEG

Women's Eden Jacket

X6W2540553

XS, S, M, L, XL, XXL, 3XL

100% Polyester

Heavyweight bonded sherpa jacket, brushed sherpa detail on yokes and pocket opening, side welt pockets with concealed zipper closure, elastic sleeve opening, Wrangler® logo pip on side seam



BLACK



CHEST LOGO METALLIC EMBROIDERY



HEM WITH INTERNAL ADJUSTABLE TOGGLES



HEM LOGO MOCK LEATHER BADGE

\$139.95 AUD, \$167.95 NZD



NEW SEASON ESSENTIAL
SOFTSHELL JACKET

LIGHTWEIGHT PROTECTION, HEAVYWEIGHT PERFORMANCE — THE WRANGLER® SOFTSHELL JACKET IS BUILT TO BEAT THE ELEMENTS AND KEEP YOU COMFORTABLE ALL SEASON LONG.

Vicky Waterproof Jacket X6W2798569 Laura High Rise Boot Cut Jean - Bailey XCP2255534 - 34" LEG

Women's Vicky Waterproof Jacket

X6W2798569

XS, S, M, L, XL, XXL, 3XL

Shell: 100% Polyester

Lining: 100% Polyester

Durable heavyweight jacket, hood with drawcord and branded metal trims, western front and back yokes with contrast corded piping, front storm flap with zip closure and metal snaps, front patch pockets with top and side entry (lined for warmth), adjustable sleeve cuffs with metal snaps, longer curved back hem, side seam splits with metal snaps, rust proof metal trims,

\$298.95 AUD, \$356.95 NZD



BLACK



DETACHABLE HOOD



INTERNAL JACQUARD AZTEC LINING



INTERNAL DRAWCORD AT WAIST FOR SHAPE



POCKET RUBBER LOGO LABEL



Vicky Waterproof Jacket
X6W2798569, Laura High
Rise Boot Cut Jean - Bailey
XCP2255534 - 34" LEG

THE VERY BEST NAME IN DENIM

SINCE "RODEO BEN" LICHTENSTEIN DESIGNED OUR FIRST PAIR BACK IN 1947, WRANGLER® HAS BECOME A CORNERSTONE OF AMERICAN DENIM. WE SET OUT TO CREATE THE WORLD'S BEST JEANS. TODAY, WE PROUDLY OFFER A WIDE VARIETY OF SIZES AND STYLES. THESE DENIM STYLES FEATURE SOMETHING FOR EVERYONE. MODERN AND WESTERN-INSPIRED.

Louise Long Sleeve Shirt X6W2127265, Chloe
High Rise Wide Leg Jean XCP2258580 - 30"LEG

**WILLOW
ULTIMATE RIDING JEAN**

MID-RISE

MID-RISE
**TROUSER
JEAN**
34" LEG



Wrangler
The Ultimate Riding Jean™
Willow

**PERFORMANCE
WAIST**

SKY



**FEATURE BACK POCKET
EMBROIDERY**



Landon Hat (Silverton)
XCP1955HAT, Bella Crew
X6W2539550, Brianna
Trousers Jean - Willow
XCP2253533 - 34" LEG

**Women's Brianna Trouser
Jean - Willow 34" Leg**

XCP2253533

0, 1, 3, 5, 7, 9, 11, 13, 15,
17, 19

74% Cotton / 22% Polyester
/ 3% Viscose / 1% Elastane
Stretch Denim, 11.5oz

Trouser jean, mid rise, stretch for
comfort and movement, performance
waist, No-Gap elastic waistband,
more room at the knee and a gradual
opening down the leg, 2 front scoop
pockets, patch coin pocket, logo
shank button

NEW STOCKLINES

\$149.95 AUD, \$181.95 NZD



Brodie Hat (Silverton) XCP1961HAT, Jewell Check Western Long Sleeve Shirt X6W2127563, Savannah Belt X6W2989BLT, Laura High Rise Boot Cut Jean - Bailey XCP2255534 - 34" LEG

BAILEY RETRO

HIGH-RISE



HIGH-RISE
BOOT CUT
JEAN
34" LEG



bailey

WILD INDIGO



FEATURE BACK POCKET
EMBROIDERY

Women's Laura High Rise Boot Cut Jean - Bailey - 34" Leg

XCP2255534

0, 1, 3, 5, 7, 9, 11, 13, 15,
17, 19

99% Cotton / 1% Elastane
Stretch Denim, 11.5oz

Boot cut, high rise, stretch for comfort
and movement, patch coin pocket,
logo shank button

NEW STOCKLINES

\$149.95 AUD, \$181.95 NZD

WIDE LEG

HIGH RISE



NEW
HIGH-RISE
WIDE LEG
JEAN



Brodie Hat (Silverton)
XCP1961HAT, Lilly
Long Sleeve Shirt
X6W2127434, Florence
Belt X6W2985BLT, Chloe
High Rise Wide Leg Jean
XCP2258580 - 30" LEG

Women's Chloe High Rise Wide Leg Jean

XCP2258580 - 30" LEG

XCP2259580 - 34" LEG

0, 1, 3, 5, 7, 9, 11, 13, 15, 17, 19

91% Cotton / 7% Polyester / 2% Elastane Stretch Denim, 11.5oz

Wide leg, high rise, stretch for comfort and movement, more room at the thigh and a gradual opening down the leg, patch coin pocket, double logo shank buttons

NEW STOCKLINES

\$149.95 AUD, \$181.95 NZD

MORNING SKY



FEATURE BACK POCKET EMBROIDERY



Montana Hat XCP1956HAT, Jerome Jacket
X6W1771522, Tony Check Logo Western
Long Sleeve Shirt X6W1111483, Tatum Belt
X6W1964BLT, Retro® Slim Straight Jean
88MWZJM34 - 34" LEG

MEN'S



Dean Reversible Vest X6W1662520,
Bob Check Button Down Long
Sleeve Shirt X6W1115489,
20X® Competition Relaxed Jean
(River Wash) 01MwxRW34 - 34" LEG





NO EMBROIDERY OPTION

**Men's Dustin Check Western
Long Sleeve Shirt**

X6W1112482

Montana Hat XCP1956HAT, Dustin Check Logo Western
Long Sleeve Shirt X6W1111482, Tatum Belt X6W1964BLT,
Retro® Slim Straight Jean 88MWZJM34 - 34" LEG

BLACK/GREEN

**Men's Dustin Check
Logo Western Long
Sleeve Shirt**

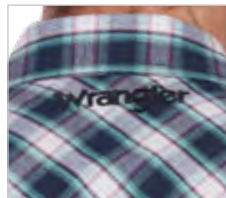
X6W1111482

XS, S, M, L, XL, XXL,
3XL, 4XL

100% Cotton
Yarn Dyed Check

Classic western long sleeve shirt,
snap closure, western chest pockets
(one with pen holder), western front
and back yokes, contrast trim on
inside collar stand, Wrangler® iconic
logo sleeve embroidery

\$119.95 AUD, \$144.95 NZD



BACK NECK LOGO
EMBROIDERY



YARN DYED
CHECK



CONTRAST
INSIDE CUFF



NO EMBROIDERY OPTION

Men's Kyle Print Western Long Sleeve Shirt
X6W1112481

Brodie Hat (Chestnut) X6W1961HAT,
Kyle Print Logo Western Long Sleeve Shirt X6W1111481,
Reg Straight Leg Jean (Original Stone) XLR1200034 - 34" LEG

NAVY/BLUE

Men's Kyle Print Logo Western Long Sleeve Shirt
X6W1111481
XS, S, M, L, XL, XXL, 3XL, 4XL
100% Cotton Print

Classic western long sleeve shirt, snap closure, western chest pockets (one with pen holder), western front and back yokes, contrast trim on inside collar stand, Wrangler® iconic logo sleeve embroidery

\$119.95 AUD, \$144.95 NZD



BACK NECK LOGO EMBROIDERY



GEOMETRIC PRINT



CONTRAST INSIDE CUFF



NO EMBROIDERY OPTION

**Men's Tony Check Western
Long Sleeve Shirt**

X6W1112483

Montana Hat XCP1956HAT, Tony Check Logo Western
Long Sleeve Shirt X6W1111483, Tatum Belt X6W1964BLT,
Retro® Slim Straight Jean 88MWZJM34 - 34" LEG

NAVY/ROYAL

**Men's Tony Check
Logo Western Long
Sleeve Shirt**

X6W1111483

XS, S, M, L, XL, XXL,
3XL, 4XL

100% Cotton
Yarn Dyed Check

Classic western long sleeve shirt,
snap closure, western chest pockets
(one with pen holder), western front
and back yokes, contrast trim on
inside collar stand, Wrangler® iconic
logo sleeve embroidery

\$119.95 AUD, \$144.95 NZD



BACK NECK LOGO
EMBROIDERY



YARN DYED
CHECK



CONTRAST
INSIDE CUFF



NO EMBROIDERY OPTION

Men's Lee Print Western Long Sleeve Shirt
X6W1112485

Brodie Hat (Chestnut) X6W1961HAT, Lee Print Logo Western Long Sleeve Shirt X6W1111485, Kayson Belt X6W1967BLT, Reg Straight Leg Jean (Original Stone) XLR1200034 - 34" LEG

BLUE/NAVY

Men's Lee Print Logo Western Long Sleeve Shirt

X6W1111485

XS, S, M, L, XL, XXL, 3XL, 4XL

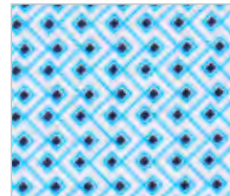
100% Cotton Print

Classic western long sleeve shirt, snap closure, western chest pockets (one with pen holder), western front and back yokes, contrast trim on inside collar stand, Wrangler® iconic logo sleeve embroidery

\$119.95 AUD, \$144.95 NZD



BACK NECK LOGO EMBROIDERY



GEOMETRIC PRINT



CONTRAST INSIDE CUFF



NO EMBROIDERY OPTION

Men's Wayne Check Western Long Sleeve Shirt

X6W1112480

Montana Hat XCP1956HAT, Wayne Check Logo Western Long Sleeve Shirt X6W1111480, Kayson Belt X6W1967BLT, 20X® Competition Relaxed Jean (River Wash) 01MWXRW34 - 34" LEG

NAVY/TAN

Men's Wayne Check Logo Western Long Sleeve Shirt

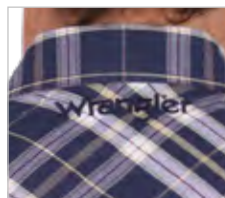
X6W1111480

XS, S, M, L, XL, XXL, 3XL, 4XL

100% Cotton
Yarn Dyed Check

Classic western long sleeve shirt, snap closure, western chest pockets (one with pen holder), western front and back yokes, contrast trim on inside collar stand, Wrangler® iconic logo sleeve embroidery

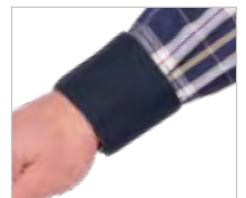
\$119.95 AUD, \$144.95 NZD



BACK NECK LOGO EMBROIDERY



YARN DYED CHECK



CONTRAST INSIDE CUFF



Montana Hat XCP1956HAT, Carl Check Western Long Sleeve Shirt X6W1111486, Jonas Belt X6W1963BLT, Retro® Slim Straight Jean 88MWZJM34 - 34" LEG

NAVY/TAN

Men's Carl Check Western Long Sleeve Shirt

X6W1111486

XS, S, M, L, XL, XXL, 3XL, 4XL

100% Cotton
Yarn Dyed Check

Classic western long sleeve shirt, snap closure, western chest pockets (one with pen holder), western front and back yokes, contrast trim on inside collar stand

\$119.95 AUD, \$144.95 NZD



BACK NECK LOGO EMBROIDERY



YARN DYED CHECK



CONTRAST INSIDE CUFF

NEW
STYLING
EMBROIDERED
YOKES



Montana Hat XCP1956HAT, Ricky Check Embroidered Long Sleeve Shirt X6W1111493, Memphis Belt X6W1965BLT, Retro® Slim Straight Jean 88MWZJM34 - 34" LEG

BLACK/TAN

Men's Ricky Check Embroidered Long Sleeve Shirt

X6W1111493

XS, S, M, L, XL, XXL, 3XL, 4XL

100% Cotton
Yarn Dyed Check

Classic western long sleeve shirt, snap closure, western chest pockets (one with pen holder), western front and back yokes, contrast trim on inside collar stand

\$119.95 AUD, \$144.95 NZD



BACK NECK LOGO EMBROIDERY



FRONT YOKE ORIGINAL HAND DRAWN EMBROIDERY



CONTRAST INSIDE CUFF



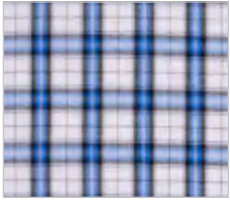
WORK SHIRT

CLASSIC SHIRT WITH SINGLE CHEST POCKET, BACK YOKE WITH BOX PLEAT AND OVERALL STRETCH FOR COMFORT AND MOVEMENT

Montana Hat XCP1956HAT, Erik Check Button
Down Long Sleeve Shirt X6W1115491, Jonas Belt
X6W1963BLT, 20X® Competition Relaxed Jean
(River Wash) 01MwxRW34 - 34" LEG



BACK NECK LOGO EMBROIDERY



YARN DYED CHECK



NAVY/BLUE

Men's Bob Check Button Down Long Sleeve Shirt

X6W1115489

XS, S, M, L, XL, XXL, 3XL, 4XL

98% Cotton / 2% Elastane Yarn Dyed Check

Classic button down long sleeve shirt, stretch for comfort and movement, button closure, back yoke with box pleat for comfort and movement, single chest pocket, button down collar, contrast trim on inside collar stand and sleeve cuffs

\$119.95 AUD, \$144.95 NZD



Brodie Hat (Chestnut)
X6W1961HAT, Bob Check
Button Down Long Sleeve
Shirt X6W1115489



BACK NECK LOGO EMBROIDERY



GEOMETRIC PRINT



NAVY/TAN

Men's Jacob Print Button Down Long Sleeve Shirt

X6W1115490

XS, S, M, L, XL, XXL, 3XL, 4XL

98% Cotton / 2% Elastane Print

Classic button down long sleeve shirt, stretch for comfort and movement, button closure, back yoke with box pleat for comfort and movement, single chest pocket, button down collar, contrast trim on inside collar stand and sleeve cuffs

\$119.95 AUD, \$144.95 NZD



BACK NECK LOGO EMBROIDERY



YARN DYED CHECK



BLUE/CYPRESS

Men's Erik Check Button Down Long Sleeve Shirt

X6W1115491

XS, S, M, L, XL, XXL, 3XL, 4XL

98% Cotton / 2% Elastane Yarn Dyed Check

Classic button down long sleeve shirt, stretch for comfort and movement, button closure, back yoke with box pleat for comfort and movement, single chest pocket, button down collar, contrast trim on inside collar stand and sleeve cuffs

\$119.95 AUD, \$144.95 NZD



ENTERTAINER'S
WESTERN SHIRT

TRADITIONAL WESTERN SHIRT WITH FRONT AND BACK YOKE EMBROIDERY,
PERFECT FOR THE MODERN COWBOY.

Montana Hat XCP1956HAT, Luke Embroidered Long
Sleeve Shirt X6W1111494, Dale Belt X6W1968BLT,
Retro® Slim Straight Jean 88MWZJM34 - 34" LEG



Montana Hat XCP1956HAT, Luke Embroidered Long Sleeve Shirt X6W1111494, Tatum Belt X6W1964BLT, Reg Straight Leg Jean (Original Rinse) XLR1200034 - 34" LEG

BLACK

Men's Luke Embroidered Long Sleeve Shirt

X6W1111494

XS, S, M, L, XL, XXL, 3XL, 4XL

100% Cotton

Classic western long sleeve shirt with original hand drawn embroidered front and back yokes, snap closure, piping detail (on front placket, sleeve cuffs and yokes), Wrangler® (right) sleeve placket logo embroidery, Wrangler® iconic logo back neck embroidery



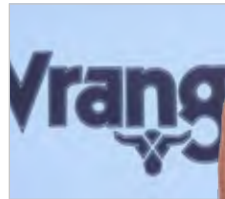
\$139.95 AUD, \$144.95 NZD



Authentic High Profile Trucker Cap X6W1943CAP, Blake Short Sleeve Tee X6W1557495, Kayson Belt X6W1967BLT, Retro® Slim Straight Jean 88MWZJM34 - 34" LEG



BACK NECK
LOGO PRINT



FRONT FEATURE
LOGO PRINT



LIGHT BLUE

**Men's Blake
Short Sleeve Tee**

X6W1557495

XS, S, M, L, XL, XXL,
3XL, 4XL

100% Cotton Jersey,
180gsm

Classic tee shape, rib neck band,
Wrangler® iconic logo hem label

\$69.95 AUD, \$84.95 NZD



Brodie Hat (Chestnut)
X6W1961HAT,
Mario Short Sleeve
Tee X6W1557499



BACK NECK
LOGO PRINT



CHEST LOGO
PRINT AND
EMBROIDERY



DENIM

**Men's Mario
Short Sleeve Tee**

X6W1557499

XS, S, M, L, XL, XXL,
3XL, 4XL

100% Cotton Jersey,
180gsm

Classic tee shape, rib neck band,
Wrangler® iconic logo hem label

\$69.95 AUD, \$84.95 NZD



BACK NECK
LOGO PRINT



FRONT FEATURE
LOGO PRINT AND
EMBROIDERY



CYPRESS

**Men's Carlos
Short Sleeve Tee**

X6W1557497

XS, S, M, L, XL, XXL,
3XL, 4XL

100% Cotton Jersey,
180gsm

Classic tee shape, rib neck band,
Wrangler® iconic logo hem label

\$69.95 AUD, \$84.95 NZD



Brodie Hat (Chestnut) X6W1961HAT,
Carlos Short Sleeve Tee X6W1557497



BACK NECK
LOGO PRINT



FRONT FEATURE
LOGO PRINT AND
EMBROIDERY



NAVY

**Men's Joel
Short Sleeve Tee**

X6W1557496

XS, S, M, L, XL, XXL,
3XL, 4XL

100% Cotton Jersey,
180gsm

Classic tee shape, rib neck band,
Wrangler® iconic logo hem label

\$69.95 AUD, \$84.95 NZD



Joel High Profile Trucker Cap X6W1948CAP, Joel Short
Sleeve Tee X6W1557496, Kayson Belt X6W1967BLT,
Retro® Slim Straight Jean 88MWZJM34 - 34" LEG



Phil 6 Panel Trucker Cap X6W1953CAP,
Evan Long Sleeve Tee X6W1568500,
Jonas Belt X6W1963BLT, Retro® Slim
Straight Jean 88MWZJM34 - 34" LEG

BLACK

**Men's Evan
Long Sleeve Tee**
X6W1568500

XS, S, M, L, XL, XXL,
3XL, 4XL

100% Cotton Jersey,
180gsm

Long sleeve tee - ideal for all year
round, rib neck band, Wrangler®
iconic logo hem label

\$76.95 AUD, \$91.95 NZD



CHEST LOGO
PRINT



BACK FEATURE
LOGO PRINT



Montana Hat XCP1956HAT, Nathaniel Stripe Rugby X6W1551504, Retro® Slim Straight Jean 88MWZJM34 - 34" LEG

BLACK/TAN MARLE

Men's Nathaniel Stripe Rugby

X6W1551504

XS, S, M, L, XL, XXL, 3XL, 4XL

100% Cotton Rugby Jersey Yarn Dyed Stripe, Peached, 330gsm

Heavyweight jersey knit rugby, concealed buttons on centre front placket, cotton drill collar with contrast underside, contrast herringbone tape trims on inside side seam splits, rib trim cuffs

\$139.95 AUD, \$167.95 NZD



BACK NECK UNDER COLLAR EMBROIDERY



CHEST LOGO EMBROIDERY AND PRINT



Tom High Profile Cap X6W1951CAP, Federick Stripe Rugby X6W1552501, Retro® Slim Straight Jean 88MWZJM34 - 34" LEG



BACK NECK LOGO EMBROIDERY



FRONT FEATURE LOGO APPLIQUÉ AND PRINT



NAVY/TAN

Men's Federick Stripe Rugby

X6W1552501

XS, S, M, L, XL, XXL, 3XL, 4XL

100% Cotton Rugby Jersey Yarn Dyed Stripe, Peached, 330gsm

Heavyweight jersey knit rugby, concealed buttons on centre front placket, cotton drill collar with contrast underside, contrast herringbone tape trims on inside side seam splits, rib trim cuffs

\$139.95 AUD, \$167.95 NZD



BACK NECK UNDER COLLAR EMBROIDERY



CHEST LOGO PRINT



BLACK

Men's Nash Rugby

X6W1551506

XS, S, M, L, XL, XXL, 3XL, 4XL

100% Cotton Rugby Jersey, Peached, 330gsm

Heavyweight jersey knit rugby, concealed buttons on centre front placket, cotton drill collar with contrast underside, herringbone tape trims on inside side seam splits, rib trim cuffs

\$139.95 AUD, \$167.95 NZD



Brodie Hat (Chestnut) X6W1961HAT, Nash Rugby X6W1551506, Retro® Slim Straight Jean 88MWZJM34 - 34" LEG



Brodie Hat (Chestnut) X6W1961HAT,
Dale 1/4 Zip Pullover X6W1573509



BACK NECK
LOGO PRINT



CHEST LOGO
PRINT



SLEEVE LOGO
PRINT



NAVY

Men's Dale
1/4 Zip Pullover

X6W1573509

XS, S, M, L, XL, XXL,
3XL, 4XL

80% Cotton / 20%
Polyester French Terry,
280gsm

Medium weight french terry 1/4 zip pullover, quilted front and back yokes with piping detail, contrast rib trim on inner collar facing, rib trim hem and cuffs, Wrangler® iconic logo hem label

\$129.95 AUD, \$155.95 NZD



BACK NECK
LOGO PRINT



CHEST LOGO
PRINT



NAVY/TAN

Men's Steve
1/4 Zip Pullover

X6W1573511

XS, S, M, L, XL, XXL,
3XL, 4XL

80% Cotton / 20%
Polyester French Terry,
280gsm

Medium weight french terry 1/4 zip pullover, cut'n'sew contrast panelling with piping detail, rib trim hem and cuffs, Wrangler® iconic logo hem label

\$129.95 AUD, \$155.95 NZD



Glen Pullover Hoodie X6W1540512,
Retro® Slim Straight Jean 88MWZJM34 - 34" LEG



BACK NECK
LOGO PRINT



FRONT FEATURE
LOGO PRINT AND
EMBROIDERY



CYPRESS

**Men's Glen
Pullover Hoodie**

X6W1540512

XS, S, M, L, XL, XXL,
3XL, 4XL

80% Cotton /
20% Polyester Brushed
Fleece, 320gsm

Heavyweight brushed fleece pullover,
contrast hood lining, hood with
drawcord closure and metal trims,
front welt pockets, rib trim (hood
opening pockets, hem, cuffs and
side panels), Wrangler® iconic logo
hem label

\$139.95 AUD, \$167.95 NZD



BACK NECK
LOGO EMBROIDERY



FRONT FEATURE
LOGO APPLIQUÉ
AND PRINT



NAVY/DENIM

**Men's Clinton
Pullover Hoodie**

X6W1540513

XS, S, M, L, XL, XXL,
3XL, 4XL

80% Cotton /
20% Polyester Brushed
Fleece, 320gsm

Heavyweight brushed fleece pullover,
cut'n'sew contrast panelling, contrast
hood lining, hood with drawcord
closure and metal trims, front kanga
patch pocket, rib trim (hood opening,
pocket opening, hem, cuffs and side
panels), Wrangler® iconic logo
pocket label

\$139.95 AUD, \$167.95 NZD



Clinton Pullover Hoodie X6W1540513,
Retro® Slim Straight Jean 88MWZJM34 - 34" LEG



He wears: Brodie Hat (Chestnut) X6W1961HAT,
 Dwayne Zip Through Hoodie X6W1770515, Retro® Slim
 Straight Jean 88MWZJM34 - 34" LEG
 She wears: Hailey Oversized Pullover Hoodie
 X6W2546548, Brianna Trousers Jean - Willow
 XCP2253533 - 34" LEG

NAVY/CYPRESS

**Men's Dwayne
 Zip Through Hoodie**
 X6W1770515

XS, S, M, L, XL, XXL,
 3XL, 4XL

80% Cotton /
 20% Polyester Brushed
 Fleece, 320gsm

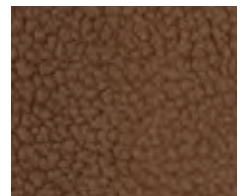
Heavyweight brushed fleece hooded jacket, cut'n'sew contrast panelling, quilted front and back yokes, hood with drawcord closure and metal trims, front kanga patch pockets, rib trim (hood opening, pocket opening, hem, cuffs and side panels), Wrangler® iconic logo pocket label
 \$169.95 AUD, \$202.95 NZD



BACK NECK LOGO
 EMBROIDERY



CHEST LOGO MOCK
 LEATHER BADGE



SHERPA LINED BODY
 AND HOOD



OUTERWEAR
VESTS & JACKETS

FOR OUTERWEAR THAT'S AS RUGGED AS THE UNFORGIVING LANDSCAPE THAT IT'S WORN IN. UNFAILING STYLE IN ANY WEATHER AND TERRAIN, AS TOUGH AS THE COWBOYS WHO WEAR THEM.

Montana Hat XCP1956HAT, Howard Trucker Jacket X6W1775523, Erik Check Button Down Long Sleeve Shirt X6W1115491, Jonas Belt X6W1963BLT, 20X® Competition Relaxed Jean (River Wash) 01MWXRW34 - 34" LEG



Brodie Hat (Chestnut) X6W1961HAT, Dean Reversible Vest X6W1662520, Bob Check Button Down Long Sleeve Shirt X6W1115489, 20X® Competition Relaxed Jean (River Wash) 01MwxRW34 - 34" LEG

Men's Dean Reversible Vest

X6W1662520

XS, S, M, L, XL, XXL, 3XL, 4XL

Shell: 85% Polyester / 15% Cotton Canvas

Lining: 95% Polyester / 5% Wool Yarn Dyed Check



Heavyweight reversible puffer vest, contrast internal brushed yarn dyed check for comfort and warmth, contrast yokes and collar, side welt pockets with concealed zips, lined for warmth, longer back hem



NAVY/TAN



COLLAR LOGO EMBROIDERY



YARN DYED CHECK



HEM LOGO MOCK LEATHER BADGE

\$199.95 AUD, \$238.95 NZD



Montana Hat XCP1956HAT,
Ruben Vest X6W1671521, Evan
Long Sleeve Tee X6W1568500,
Retro® Slim Straight Jean
88MWZJM34 - 34" LEG

Men's Ruben Vest

X6W1671521

XS, S, M, L, XL, XXL, 3XL, 4XL

Shell: 65% Polyester /
35% Cotton Canvas

Lining: 100% Polyester

Durable midweight canvas vest, sherpa collar lining for comfort and warmth, contrast yokes and collar, contrast corded piping detail on pockets and yokes, front storm flap with metal zip closure and metal snaps, side welt pockets (lined for warmth), longer back hem, internal chest pocket and hem pocket for mobile phone, internal quilted satin lining for comfort and movement, rust proof metal trims



DARK TAN/BLACK



COLLAR LOGO
EMBROIDERY



PIPING
DETAIL



HEM LOGO MOCK
LEATHER BADGE

\$179.95 AUD, \$215.95 NZD



Montana Hat XCP1956HAT, Ruben Jacket X6W1771521, 20X® Competition Relaxed Jean (River Wash) 01MWXRW34 - 34" LEG

Men's Ruben Jacket

X6W1771521

XS, S, M, L, XL, XXL, 3XL, 4XL

Shell: 65% Polyester / 35% Cotton Canvas

Lining: 100% Polyester

Durable midweight canvas jacket, sherpa collar lining for comfort and warmth, contrast yokes and collar, contrast corded piping detail on pockets and yokes, front storm flap with metal zip closure and metal snaps, side welt pockets (lined for warmth), longer back hem, internal chest pocket and hem pocket for mobile phone, internal quilted satin lining for comfort and movement, adjustable sleeve cuffs with metal snaps, rust proof metal trims

\$219.95 AUD, \$264.95 NZD



DARK TAN/BLACK



COLLAR LOGO EMBROIDERY



SLEEVE LOGO EMBROIDERY



HEM LOGO MOCK LEATHER BADGE



Montana Hat XCP1956HAT, Jerome Vest
X6W1671522, Ricky Check Embroidered Long
Sleeve Shirt X6W1111493, Retro® Slim Straight
Jean 88MWZJM34 - 34" LEG

Men's Jerome Vest

X6W1671522

XS, S, M, L, XL, XXL, 3XL, 4XL

Shell: 100% Cotton Canvas

Lining: 100% Polyester Sherpa

Durable heavyweight canvas vest, mock leather corded piping detail on pockets and yokes, front storm flap with metal zip closure and metal snaps, top and side entry pockets (lined for warmth), longer back hem, internal chest pocket and hem pocket for mobile phone, rust proof metal trims



CHOCOLATE



SHERPA LINED BODY
AND COLLAR



PATCH POCKET W
STITCH DETAILING



BACK NECK MOCK
LEATHER BADGE

\$199.95 AUD, \$238.95 NZD



Montana Hat XCP1956HAT, Jerome Jacket X6W1771522, Tony Check Logo Western Long Sleeve Shirt X6W1111483, Tatum Belt X6W1964BLT, Retro® Slim Straight Jean 88MWZJM34 - 34" LEG

Men's Jerome Jacket

X6W1771522

XS, S, M, L, XL, XXL, 3XL, 4XL

Shell: 100% Cotton Canvas

Lining: 100% Polyester Sherpa

Durable heavyweight canvas jacket, mock leather corded piping detail on pockets and yokes, front storm flap with metal zip closure and metal snaps, top and side entry pockets (lined for warmth), adjustable sleeve cuffs with metal snaps, longer back hem, internal chest pocket and hem pocket for mobile phone, rust proof metal trims



CHOCOLATE



SHERPA LINED BODY AND COLLAR



PATCH POCKET W STITCH DETAILING



BACK NECK LOGO MOCK LEATHER BADGE

\$279.95 AUD, \$333.95 NZD



Montana Hat XCP1956HAT, Howard Trucker Jacket X6W1775523, Erik Check Button Down Long Sleeve Shirt X6W1115491, Jonas Belt X6W1963BLT, 20X® Competition Relaxed Jean (River Wash) 01MWXRW34 - 34" LEG

Men's Howard Trucker Jacket

X6W1775523

XS, S, M, L, XL, XXL, 3XL, 4XL

Shell: 99% Cotton /
1% Elastane Canvas

Lining: 100% Polyester Sherpa

Collar: 100% Genuine Leather



TAN



SHERPA
LINING



POCKET AND FRONT
PLACKET METAL SNAPS



BACK NECK LOGO
MOCK LEATHER BADGE

Classic Wrangler® trucker style jacket, stretch for comfort and movement, 100% washable leather collar, side welt pockets, adjustable sleeve cuffs and hem band with metal snaps, internal chest pocket, rust proof metal trims

\$259.95 AUD, \$309.95 NZD



Stan Beanie X6W1960BEA, Mitchell Logo Shirt Jacket X6W1775525, Retro® Slim Straight Jean 88MWZJM34 - 34" LEG

Men's Mitchell Logo Shirt Jacket

X6W1775525

XS, S, M, L, XL, XXL, 3XL, 4XL

Shell: 95% Polyester /

5% Wool Yarn Dyed Check

Lining: 100% Polyester Sherpa



BLUE/WHITE



DETACHABLE HOOD



SLEEVE LOGO EMBROIDERY



BACK NECK AND HEM LOGO MOCK LEATHER BADGE

Classic Wrangler® lumberjack style jacket, brushed yarn dyed check, internal polar fleece body lining for comfort and warmth, front storm flap with zip closure and metal snaps, chest and front side pockets with metal snaps, lined for warmth, adjustable sleeve cuffs and hem band with metal snaps, internal chest pocket, rust proof metal trims

\$298.95 AUD, \$356.95 NZD



THE ESSENTIAL
SOFTSHELL JACKET

LIGHTWEIGHT PROTECTION, HEAVYWEIGHT PERFORMANCE — THE WRANGLER® SOFTSHELL JACKET IS BUILT TO BEAT THE ELEMENTS AND KEEP YOU COMFORTABLE ALL SEASON LONG.

Brodie Hat (Chestnut) X6W1961HAT, Cade Logo
 Softshell Jacket X6W1773262, Retro® Slim Straight
 Jean 88MWZJM34 - 34" LEG

Men's Cade Logo Softshell Jacket

X6W1773262

XS, S, M, L, XL, XXL, 3XL, 4XL

Shell: 95% Polyester / 5% Elastane Soft Shell

Lining: 100% Polyester

Softshell fabric - waterproof and windproof, breathable, Wrangler® iconic logo sleeve print, contrast corded piping detail on yokes and side pocket openings, front storm flap with zip closure and metal snaps, chest pocket with logo zip pull, patch pockets with top and side entry (lined for warmth), sleeves with rib to keep in warmth, longer back hem, rib collar facing for warmth

\$219.95 AUD, \$333.95 NZD



NAVY



DETACHABLE HOOD



BACK NECK LOGO PRINT



PRINTED POLAR FLEECE LINING



PATCH POCKET W STITCH DETAILING



Brodie Hat (Chestnut) X6W1961HAT, Cade Logo Softshell Jacket X6W1773262, Retro® Slim Straight Jean 88MWZJM34 - 34" LEG



DENIM

THE WESTERN ORIGINAL: COWBOY-ENDORSED WARDROBE ESSENTIALS
THAT SEAMLESSLY TRANSITION FROM THE RODEO TO PADDOCK.

Luke Embroidered Long Sleeve Shirt X6W1111494,
Tatum Belt X6W1964BLT, Reg Straight Leg Jean
(Original Rinse) XLR1200034 - 34" LEG

BOOT CUT JEAN

LOWER-RISE



ORIGINAL STONE

ORIGINAL RINSE

Men's Reg Boot Cut Jean

XLR1201032 - 32" LEG

XLR1201034 - 34" LEG

30, 32, 34, 36, 38, 40, 42, 44

99% Cotton / 1% Elastane

Stretch Denim, 14oz

Bootcut leg, authentic 5 pocket styling, sits lower on waist, slim (seat, thigh and knee), fits over boots, coin pocket, mock leather label on back pocket, logo shank button, logo rivets, stretch for comfort and movement

NEW STOCKLINES

\$109.95 AUD, \$129.95 NZD



FEATURE BACK POCKET EMBROIDERY



HEAVY WEIGHT DENIM



2-WAY FLEX FOR COMFORT



2 X LONGER LASTING DENIM

STRAIGHT LEG JEAN

LOWER-RISE



ORIGINAL STONE

ORIGINAL RINSE

Men's Reg Straight Leg Jean

XLR1200032 - 32" LEG

XLR1200034 - 34" LEG

30, 32, 34, 36, 38, 40, 42, 44

99% Cotton / 1% Elastane

Stretch Denim, 14oz

Straight leg, authentic 5 pocket styling, sits lower on waist, slim (seat, thigh and straight to leg opening), fits over boots, coin pocket, mock leather label on back pocket, logo shank button, logo rivets, stretch for comfort and movement

NEW STOCKLINES

\$109.95 AUD, \$129.95 NZD



FEATURE BACK POCKET EMBROIDERY



HEAVY WEIGHT DENIM



2-WAY FLEX FOR COMFORT



2 X LONGER LASTING DENIM



Lee Print Logo Western Long Sleeve Shirt X6W1111485,
Kayson Belt X6W1967BLT, Reg Straight Leg Jean
(Original Stone) XLR1200034 - 34" LEG

PRICES ARE RRP



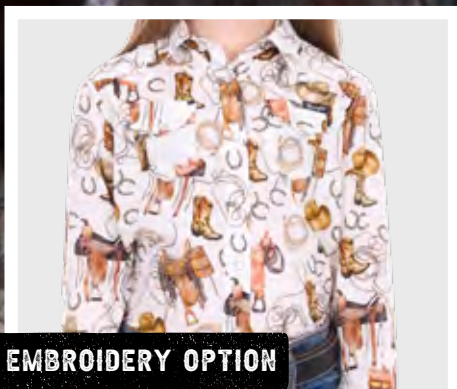
Boll Bongora Hat (Natural) X4Y3901BOL,
Henley Check Logo Long Sleeve Shirt
X6W5127562, Abrasion Logo Belt XCP3902BEL,
Retro® Boot Cut Jean 09MWWGMSREG

GIRLS



Mallory Pullover Hoodie X6W5597551,
Retro® Boot Cut Jean 09MWGMSREG





NO EMBROIDERY OPTION

Girl's Marilyn Print Western Logo Long Sleeve Shirt

X6W5130558

Boll Bongora Hat (Natural) X4Y3901BOL,
Marilyn Print Western Logo Long Sleeve Shirt
X6W5129558, Abrasion Logo Belt XCP3902BEL,
Retro® Boot Cut Jean 09MWGMSREG

IVORY

Girl's Marilyn Print Western Logo Long Sleeve Shirt

X6W5129558

4, 6, 8, 10, 12, 14

100% Viscose Print

Fashion style western long sleeve shirt, puff sleeve detail with gathered sleeve head, pearl snap closure, western chest pockets, western front and back yokes, Wrangler® logo pip on side seam

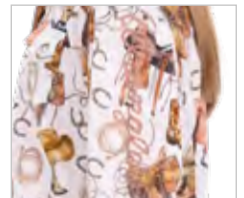
\$79.95 AUD, \$105.95 NZD



BACK NECK LOGO PRINT



HAND DRAWN WESTERN NOVELTY PRINT



SLEEVE LOGO PRINT



NO EMBROIDERY OPTION

**Girl's Henley Check
Long Sleeve Shirt**

X6W5128562

Boll Bongora Hat (Natural) X4Y3901BOL,
Henley Check Logo Long Sleeve Shirt X6W5127562

IVORY/PINK

**Girl's Henley Check
Logo Long Sleeve Shirt**
X6W5127562

4, 6, 8, 10, 12, 14

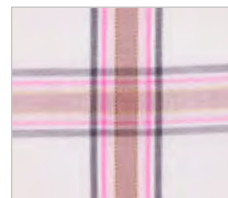
99% Cotton / 1% Metallic
Yarn Dyed Check

Classic western long sleeve shirt,
pearl snap closure, western chest
pockets, western front and back
yokes, Wrangler® logo pip on
side seam

\$79.95 AUD, \$105.95 NZD



BACK NECK LOGO
EMBROIDERY



METALLIC YARN
DYED CHECK



SLEEVE LOGO
EMBROIDERY



Phoebe Trucker Cap X6W5945CAP,
Vanessa Short Sleeve Tee X6W5598540



BACK NECK LOGO
METALLIC PRINT



ORIGINAL HAND
DRAWN PRINT WITH
METALLIC DETAIL



NAVY



BACK NECK LOGO
METALLIC PRINT



ORIGINAL HAND
DRAWN PRINT WITH
METALLIC DETAIL



ROSE

Girl's Vanessa Short Sleeve Tee

X6W5598540

4, 6, 8, 10, 12, 14

100% Cotton Jersey,
180gsm

Classic tee shape, rib neck band,
Wrangler® logo pip on side seam

\$49.95 AUD, \$66.95 NZD

Girl's Adriana Short Sleeve Tee

X6W5598538

4, 6, 8, 10, 12, 14

100% Cotton Jersey,
180gsm

Classic tee shape, rib neck band,
Wrangler® logo pip on side seam

\$49.95 AUD, \$66.95 NZD



Boll Bongora Hat (Natural) X4Y3901BOL,
Adriana Short Sleeve Tee X6W5598538,
Retro® Boot Cut Jean 09MWGMSREG





Mallory Pullover Hoodie X6W5597551,
Retro® Boot Cut Jean 09MWGMSREG



FRONT FEATURE
LOGO APPLIQUE AND
METALLIC EMBROIDERY



ROSE/NAVY

**Girl's Brooke
Pullover Hoodie**

X6W5597541

4, 6, 8, 10, 12, 14

80% Cotton / 20%
Polyester Brushed Fleece,
320gsm

Heavyweight brushed fleece pullover,
cut'n'sew contrast panelling, front
kanga patch pocket, contrast hood
lining, rib trim hem and cuffs,
Wrangler® logo pip on side seam

\$84.95 AUD, \$112.95 NZD



FRONT AND BACK
ORIGINAL HAND
DRAWN PRINT



SLEEVE LOGO
EMBROIDERY



NAVY

**Girl's Mallory
Pullover Hoodie**

X6W5597551

4, 6, 8, 10, 12, 14

80% Cotton / 20%
Polyester Brushed Fleece,
320gsm

Heavyweight brushed fleece pullover,
contrast hood lining, rib trim hem and
cuff detail, Wrangler® logo pip on
side seam

\$84.95 AUD, \$112.95 NZD

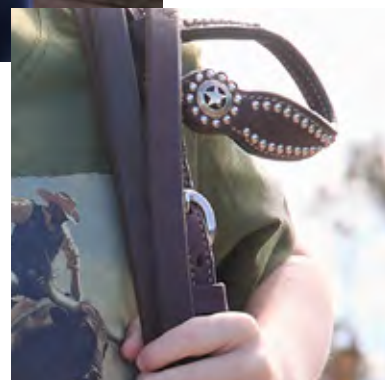
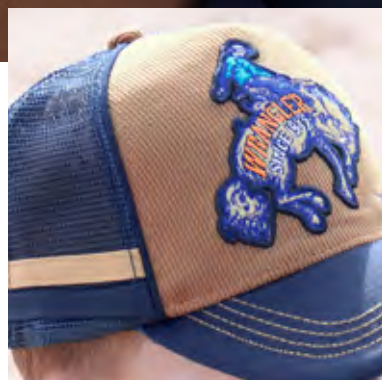


Boll Bongora Hat (Natural) X4Y3901BOL,
Tony Check Logo Western Long Sleeve Shirt
X6W3111483, Abrasion Logo Belt XCP3902BEL,
Retro® Slim Straight Jean 88JWZJMREG

Steve 1/4 Zip Pullover X6W3573511



BOYS





NO EMBROIDERY OPTION

**Boy's Kyle Print
Western Long Sleeve Shirt**

X6W3112481

Boll Bongora Hat (Natural) X4Y3901BOL, Kyle Print
Logo Western Long Sleeve Shirt X6W3111481,
Retro® Slim Straight Jean 88JWZJMREG

NAVY/BLUE

**Boy's Kyle Print
Logo Western Long
Sleeve Shirt**

X6W3111481

4, 6, 8, 10, 12, 14

100% Cotton Print

Classic western long sleeve shirt,
snap closure, western chest pockets,
western front and back yokes,
contrast trim on inside collar stand
and sleeve cuffs



BACK NECK LOGO
EMBROIDERY



GEOMETRIC
PRINT



SLEEVE LOGO
EMBROIDERY

\$79.95 AUD, \$105.95 NZD

Tony Check Logo Western Long Sleeve Shirt
 X6W3111483, Abrasion Logo Belt XCP3902BEL,
 Retro® Slim Straight Jean 88JWZJMREG



NO EMBROIDERY OPTION

Boy's Tony Check Western Long Sleeve Shirt

X6W3112483

NAVY/ROYAL

Boy's Tony Check Logo Western Long Sleeve Shirt

X6W3111483

4, 6, 8, 10, 12, 14

100% Cotton Yarn

Dyed Check

Classic western long sleeve shirt, snap closure, western chest pockets, western front and back yokes, contrast trim on inside collar stand and sleeve cuffs

\$79.95 AUD, \$105.95 NZD



BACK NECK LOGO EMBROIDERY



YARN DYED CHECK



SLEEVE LOGO EMBROIDERY

FRONT FEATURE
LOGO PRINTBACK NECK
LOGO PRINT

NAVY

**Boy's Joel
Short Sleeve Tee**

X6W3557496

4, 6, 8, 10, 12, 14

100% Cotton Jersey
180gsmClassic tee shape, rib neck band,
Wrangler® iconic logo hem label

\$49.95 AUD, \$66.95 NZD

Joel Short Sleeve Tee X6W3557496,
Retro® Slim Straight Jean 88JWZJMREGFRONT FEATURE LOGO
PRINT AND EMBROIDERYBACK NECK
LOGO PRINT

CYPRESS

**Boy's Carlos
Short Sleeve Tee**

X6W3557497

4, 6, 8, 10, 12, 14

100% Cotton Jersey
180gsmClassic tee shape, rib neck band,
Wrangler® iconic logo hem label

\$49.95 AUD, \$66.95 NZD

Carlos Short Sleeve Tee X6W3557497,
Retro® Slim Straight Jean 88JWZJMREG



Steve 1/4 Zip Pullover X6W3573511
Retro® Slim Straight Jean 88JWZJMREG

NAVY/TAN

**Boy's Steve
1/4 Zip Pullover**

X6W3573511

4, 6, 8, 10, 12, 14

80% Cotton / 20%
Polyester French Terry
280gsm

Medium weight french terry 1/4 zip pullover, cut'n'sew contrast panelling with piping detail, rib trim inside collar, hem and cuffs, Wrangler® iconic logo hem label



COLLAR
LOGO EMBROIDERY



CHEST LOGO
PRINT

\$98.95 AUD, \$129.95 NZD



Conner Trucker Cap X6W3952CAP,
Clinton Pullover Hoodie X6W3540513,
Retro® Slim Straight Jean 88JWZJMREG

NAVY/DENIM

**Boy's Clinton
Pullover Hoodie**
X6W3540513

4, 6, 8, 10, 12, 14

80% Cotton / 20%

Polyester Brushed Fleece
320gsm

Heavyweight brushed fleece pullover, cut'n'sew contrast panelling, contrast hood lining, rib trim hood opening, cuffs and side panels, Wrangler® iconic logo hem label

\$98.95 AUD, \$129.95 NZD



BACK NECK
LOGO EMBROIDERY



FRONT FEATURE
LOGO APPLIQUE
AND PRINT

**NEW
STYLE**



Ruben Jacket X6W3771521,
Retro® Slim Straight Jean 88JWZJMREG

Boy's Ruben Jacket

X6W3771521

4, 6, 8, 10, 12, 14

Shell: 65% Polyester /

35% Cotton Canvas

Lining: 100% Polyester

Durable midweight canvas jacket, contrast yokes and collar, contrast corded piping details on pockets, front storm flap with metal zip closure and metal snaps, side welt pockets, lined for warmth, longer back hem, internal quilted satin lining for comfort and movement, adjustable sleeve cuffs with metal snaps, rust proof metal trims



DARK TAN/BLACK



COLLAR LOGO
PRINT



SLEEVE LOGO
PRINT



HEM LOGO MOCK
LEATHER BADGE

\$159.95 AUD, \$217.95 NZD

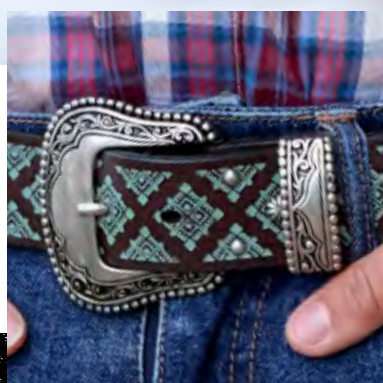


He wears: Montana Hat XCP1956HAT, Howard Trucker Jacket X6W1775523, Erik Check Button Down Long Sleeve Shirt X6W1115491, Jonas Belt X6W1963BLT, 20X® Competition Relaxed Jean (River Wash) 01MWXRW34 - 34" LEG. She wears: Brodie Hat (Silverton) XCP1961HAT, Dixie Denim Jacket X6W2701568, Brianna Trouser Jean - Willow XCP2253533 - 34" LEG

ACCESSORIES



Lin High Profile Trucker Cap
X6W2940CAP, Bridget Western Long
Sleeve Shirt (Cream) X6W2127462





Francis High Profile Ponytail
Trucker Cap X6W2936CAP,
Piper Stripe Rugby
X6W2577546

**Francis High Profile
Ponytail Trucker Cap**
X6W2936CAP

One Size

Main: 100% Cotton

Peak: 100% Cotton

Mesh: 100% Polyester

High profile 5 panel trucker
cap, yardage printed mesh
panels, contrast peak, contrast
sandwich peak

\$39.95 AUD, \$47.95 NZD

NAVY/TAN



BACK
EMBROIDERY



FRONT AZTEC AND
LOGO EMBROIDERY



PONYTAIL
HOLE



BACK EMBROIDERY



FRONT LOGO EMBROIDERY



PONYTAIL HOLE

Nat High Profile Ponytail Trucker Cap

X6W2935CAP

One Size

Main: 100% Cotton
Peak: 100% Cotton
Mesh: 100% Polyester



SAGE/OFF WHITE

High profile 5 panel trucker cap, yardage printed mesh panels, contrast peak, contrast sandwich peak

\$39.95 AUD, \$47.95 NZD



BACK EMBROIDERY



FRONT EMBROIDERY



PONYTAIL HOLE

Erinn High Profile Ponytail Trucker Cap

X6W2939CAP

One Size

Main: 100% Cotton
Peak: 100% Cotton
Mesh: 100% Polyester



OLIVE/PINK

High profile 5 panel trucker cap, contrast peak, contrast sandwich peak

\$39.95 AUD, \$47.95 NZD



BACK EMBROIDERY



FRONT LOGO EMBROIDERY



PONYTAIL HOLE

Stevie High Profile Ponytail Trucker Cap

X6W2937CAP

One Size

Main: 100% Cotton
Peak: 100% Cotton
Mesh: 100% Polyester



AQUA

High profile 5 panel trucker cap, yardage printed crown, contrast sandwich peak

\$39.95 AUD, \$47.95 NZD



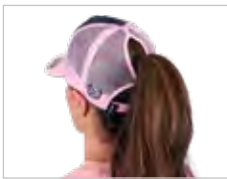
Erinn High Profile Ponytail Trucker Cap X6W2939CAP, Luella Stripe Rugby X6W2577543



BACK EMBROIDERY



FRONT LOGO EMBROIDERY



PONYTAIL HOLE



NAVY/PINK



BACK EMBROIDERY



FRONT LOGO EMBROIDERY AND PRINT



RUST

Darla High Profile Ponytail Trucker Cap

X6W2938CAP

One Size

Main: 100% Cotton

Peak: 100% Cotton

Mesh: 100% Polyester

High profile 5 panel trucker cap, yardage printed mesh panels, contrast peak, contrast sandwich peak

\$39.95 AUD, \$47.95 NZD

Lin High Profile Trucker Cap

X6W2940CAP

One Size

Main: 100% Cotton

Peak: 100% Cotton

Mesh: 100% Polyester

High profile 5 panel trucker cap, contrast sandwich peak, side panel taping

\$39.95 AUD, \$47.95 NZD



Lin High Profile Trucker Cap X6W2940CAP, Bridget Western Long Sleeve Shirt (Cream) X6W2127462



Sasha High Profile Trucker Cap X6W2941CAP
 Janey Knitted Pullover X6W2542577

Sasha High Profile Trucker Cap
 X6W2941CAP

One Size
 Main: 100% Cotton
 Peak: 100% Cotton
 Mesh: 100% Polyester

High profile 5 panel trucker cap, peak with contrast top stitching, contrast sandwich peak, side panel taping

\$39.95 AUD, \$47.95 NZD

BLUE



BACK EMBROIDERY



FRONT MOCK LEATHER BADGE AND EMBROIDERY





BACK EMBROIDERY



FRONT LOGO EMBROIDERY



PINK/NAVY



BACK EMBROIDERY



FRONT LOGO EMBROIDERY



NAVY/BLUE



Annabelle High Profile Trucker Cap

X6W2942CAP

One Size

Main: 100% Cotton

Peak: 100% Cotton

Mesh: 100% Polyester

High profile 5 panel trucker cap, contrast sandwich peak, side panel taping

\$39.95 AUD, \$47.95 NZD

Elly High Profile Trucker Cap

X6W2943CAP

One Size

Main: 100% Cotton

Peak: 100% Cotton

Mesh: 100% Polyester

High profile 5 panel trucker cap, contrast peak, contrast sandwich peak, side panel taping

\$39.95 AUD, \$47.95 NZD



BACK EMBROIDERY



FRONT LOGO EMBROIDERY



OAT MARLE/TAN



Myrle Cap

X6W2944CAP

One Size

100% Cotton

5 Panel full back cap, contrast peak, contrast sandwich peak, side panel taping

\$39.95 AUD, \$47.95 NZD



Myrle Cap X6W2944CAP,
Mallory Crew X6W2527551,
Brianna Trouser Jean - Willow
XCP2253533 - 34" LEG



Authentic High Profile Trucker Cap X6W1943CAP, Blake Short Sleeve Tee X6W1557495

DARK TAN/NAVY

Authentic High Profile Trucker Cap

X6W1943CAP

One Size

Main: 100% Cotton

Peak: 100% Cotton

Mesh: 100% Polyester

High profile 5 panel trucker cap, contrast peak, contrast sandwich peak, side panel taping, contrast crown piping

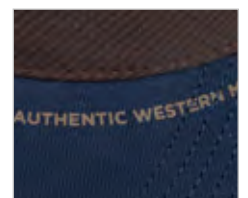
\$39.95 AUD, \$47.95 NZD



BACK EMBROIDERY



FRONT MOCK LEATHER BADGE



PEAK PRINT



BACK EMBROIDERY



FRONT LOGO EMBROIDERY AND PRINT



SAGE/NAVY

High profile 5 panel trucker cap, contrast peak, contrast sandwich peak, side panel taping, contrast crown piping

\$39.95 AUD, \$47.95 NZD



BACK EMBROIDERY



FRONT LOGO EMBROIDERY AND PRINT



UNDER PEAK PRINT

Mario High Profile Trucker Cap

X6W1947CAP

One Size

Main: 100% Cotton
Peak: 100% Cotton
Mesh: 100% Polyester

High profile 5 panel trucker cap, crown with tonal printed logo yardage, peak with contrast print and top stitching, contrast sandwich peak, side panel taping, contrast crown piping

\$39.95 AUD, \$47.95 NZD



NAVY/DENIM



BACK EMBROIDERY



FULL PRINT ON CROWN WITH LOGO EMBROIDERY



BLACK/MULTI

High profile 5 panel trucker cap, peak with contrast top stitching, contrast sandwich peak, side panel taping, contrast crown piping

\$39.95 AUD, \$47.95 NZD



Eddie High Profile Trucker Cap

X6W1946CAP

One Size

Main: 100% Polyester
Peak: 100% Cotton
Mesh: 100% Polyester



Eddie High Profile Trucker Cap X6W1946CAP
Carl Check Western Long Sleeve Shirt X6W1111486, Jonas Belt X6W1963BLT, Retro® Slim Straight Jean 88MWZJM34 - 34" LEG



BACK EMBROIDERY



FRONT LOGO EMBROIDERY AND PRINT



PEAK PRINT



TAN/DARK TAN

Joel High Profile Trucker Cap

X6W1948CAP

One Size

Main: 100% Cotton

Peak: 100% Cotton

Mesh: 100% Polyester

High profile 5 panel trucker cap, contrast sandwich peak, contrast peak and top stitching, side panel taping, contrast crown piping

\$39.95 AUD, \$47.95 NZD



Joel High Profile Trucker Cap X6W1948CAP,
Joel Short Sleeve Tee X6W1557496



BACK EMBROIDERY



FRONT LOGO EMBROIDERY AND PRINT



BLACK/TEAL

Dennis High Profile Trucker Cap

X6W1949CAP

One Size

Main: 100% Cotton

Peak: 100% Cotton

Mesh: 100% Polyester

High profile 5 panel trucker cap, peak with contrast printed logo yardage, contrast sandwich peak, side panel taping

\$39.95 AUD, \$47.95 NZD



BACK EMBROIDERY



FRONT LOGO MOCK LEATHER BADGE



UNDER PEAK PRINT



SAGE/CYPRESS

Dwayne High Profile Trucker Cap

X6W1950CAP

One Size

Main: 100% Cotton

Peak: 100% Cotton

Mesh: 100% Polyester

High profile 5 panel trucker cap, crown with contrast printed logo yardage, contrast peak with contrast print and top stitching, contrast sandwich peak, side panel taping, contrast crown piping

\$39.95 AUD, \$47.95 NZD





Tom High Profile Cap
X6W1951CAP, Steve
1/4 Zip Pullover
X6W1573511,
Retro® Slim Straight Jean
88MWZJM34 - 34" LEG

TAN/NAVY

Tom High Profile Cap

X6W1951CAP

One Size

100% Cotton

High profile 5 panel full back cap, peak with contrast print and top stitching, contrast sandwich peak, side panel taping, contrast crown piping



BACK
EMBROIDERY



FRONT LOGO
EMBROIDERY
AND PRINT

\$39.95 AUD, \$47.95 NZD





BACK EMBROIDERY



FRONT LOGO MOCK LEATHER BADGE



OAT MARLE/NAVY



Steve High Profile Cap X6W1952CAP, Dwayne Zip Through Hoodie X6W1770515

Steve High Profile Cap

X6W1952CAP

One Size

100% Cotton

High profile 5 panel full back cap, peak with contrast print and top stitching, contrast sandwich peak, side panel taping, contrast crown piping

\$39.95 AUD, \$47.95 NZD



BACK EMBROIDERY



FRONT LOGO EMBROIDERY



BLACK/RUSTIC MULCH

Phil 6 Panel Trucker Cap

X6W1953CAP

One Size

Main: 100% Cotton

Peak: 65% Polyester / 35% Cotton

Mesh: 100% Polyester

6 Panel trucker cap, contrast peak, contrast sandwich peak, side panel taping

\$39.95 AUD, \$47.95 NZD



BACK EMBROIDERY



FRONT LOGO EMBROIDERY



TAN/NAVY

Cole 6 Panel Trucker Cap

X6W1954CAP

One Size

Main: 100% Cotton

Peak: 100% Cotton

Mesh: 100% Polyester

6 Panel trucker cap, contrast peak with contrast top stitching, contrast sandwich peak, side panel taping

\$39.95 AUD, \$47.95 NZD



Phoebe Trucker Cap X6W5945CAP,
Vanessa Short Sleeve Tee X6W5598540



BACK
EMBROIDERY



FRONT LOGO
EMBROIDERY



ORCHID/RUST



BACK
EMBROIDERY



FRONT LOGO
EMBROIDERY



NAVY/PINK

**Kid's Phoebe
Trucker Cap**

X6W5945CAP

One Size

Main: 100% Cotton
Peak: 100% Cotton
Mesh: 100% Polyester

5 Panel trucker cap, contrast peak with contrast top stitching, contrast sandwich peak, side panel taping

\$39.95 AUD, \$47.95 NZD

**Kid's Molly
Trucker Cap**

X6W5946CAP

One Size

Main: 100% Cotton
Peak: 100% Cotton
Mesh: 100% Polyester

5 Panel trucker cap, contrast peak, contrast sandwich peak, side panel taping

\$39.95 AUD, \$47.95 NZD



BACK EMBROIDERY



FRONT LOGO EMBROIDERY WITH GRADIENT PRINT



NAVY/BLUE



BACK EMBROIDERY



FRONT LOGO EMBROIDERY



TAN/NAVY

Kid's Robbie Trucker Cap

X6W3951CAP

One Size

Main: 100% Polyester
Peak: 100% Cotton
Mesh: 100% Polyester

5 Panel trucker cap, contrast peak with contrast stitching and print, contrast sandwich peak, side panel taping

\$39.95 AUD, \$47.95 NZD

Kid's Conner Trucker Cap

X6W3952CAP

One Size

Main: 100% Polyester
Peak: 100% Cotton
Mesh: 100% Polyester

5 Panel trucker cap, contrast peak with contrast stitching, contrast sandwich peak, side panel taping

\$39.95 AUD, \$47.95 NZD



Robbie Trucker Cap
X6W3951CAP, Tony
Check Logo Western
Long Sleeve Shirt
X6W311483



HATS

FOR TRUE ICONIC WESTERN STYLE - OUR CLASSIC HATS
PROVIDE COVERAGE AND COMFORT FOR ALL SEASONS.

Brodie Hat (Silverton) XCP1961HAT,
Lilly Long Sleeve Shirt X6W2127434



Brodie Hat (Chestnut)
 X6W1961HAT, Dean Reversible
 Vest X6W1662520, Bob Check
 Button Down Long Sleeve Shirt
 X6W1115489, 20X® Competition
 Relaxed Jean (River Wash)
 01MwxRW34 - 34" LEG

Brodie Hat

X6W1961HAT - CHESTNUT

XCP1961HAT - SILVERTON

54, 55, 56, 57, 58, 59, 60, 61 (cm)

Brim Width: 10.5cm

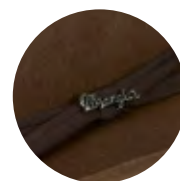
Crown Height: 11cm

Wool Felt

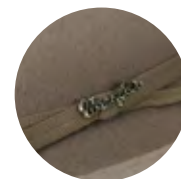
Fully lined crown, leather sweatband,
 Wrangler® metal logo pin



CHESTNUT



SILVERTON



\$259.95 AUD, \$309.95 NZD

NEW STOCKLINES



Montana Hat XCP1956HAT,
Jerome Vest X6W1671522,
Ricky Check Embroidered
Long Sleeve Shirt
X6W1111493



BLACK



BLACK



Montana Hat
XCP1956HAT

54, 55, 56, 57, 58, 59,
60, 61 (cm)
Brim Width: 11cm
Crown Height: 12cm
Wool Felt

Wool felt hatband, fully lined crown,
Comfort Tech moisture wicking
sweatband, Wrangler® metal logo pin

NEW STOCKLINES

\$259.95 AUD, \$309.95 NZD

Jhonson Bangora Hat
X6W2025JHO

53, 54, 55, 56, 57, 58, 59,
60, 61, 62 (cm)
Brim Width: 10cm
Crown Height: 11.5cm
Paper Straw

Crown pattern detail, eyelets for
ventilation, water and stain resistant,
leather sweatband, Wrangler® metal
logo pin

\$129.95 AUD, \$155.95 NZD



HEM MOCK
LEATHER BADGE



NAVY/BLUE

3 Colour jacquard knit beanie

Jeff Beanie
X6W1959BEA
One Size
100% Acrylic

\$39.95 AUD, \$47.95 NZD



HEM MOCK
LEATHER BADGE



NAVY/TAN

3 Colour jacquard knit beanie

Stan Beanie
X6W1960BEA
One Size
100% Acrylic

\$39.95 AUD, \$47.95 NZD



HEM MOCK
LEATHER BADGE



BLACK/CHOCOLATE

3 Colour jacquard knit beanie, faux fur pompom, fold up hem

Kate Beanie
X6W2959BEA
One Size
100% Acrylic

\$39.95 AUD, \$47.95 NZD



Kate Beanie X6W2959BEA,
Vanessa Short Sleeve Tee
X6W2598540, Fiona Knitted
Cardigan X6W2533575



LEATHER BELTS

WRANGLER® LEATHER BELTS WILL QUICKLY BECOME YOUR GO-TO FOR DRESSING UP, DRESSING DOWN, AND EVERYTHING IN BETWEEN. WEAR WITH YOUR FAVORITE PAIR OF WRANGLER JEANS OR PANTS FOR A CLASSIC WESTERN LOOK.

Marilyn Print Western Long Sleeve Shirt
X6W2126558, Florence Belt X6W2985BLT,
Brianna Trouser Jean - Willow XCP2253533 -
34" LEG, Brodie Hat (Chestnut) X6W1961HAT



TAN

Florence Belt

X6W2985BLT

28, 30, 32, 34, 36, 38, 40, 42, 44 (inches)

Genuine Leather

Tooled strap, removable buckle, Wrangler® iconic concho, antique silver hardware

\$109.95 AUD, \$130.95 NZD



MAHOGANY

Alyssa Belt

X6W2986BLT

28, 30, 32, 34, 36, 38, 40, 42, 44 (inches)

Genuine Leather

Tooled strap, contrast handlace, removable buckle, Wrangler® iconic concho, antique silver hardware

\$109.95 AUD, \$130.95 NZD



TAN

Maeve Belt

X6W2987BLT

28, 30, 32, 34, 36, 38, 40, 42, 44 (inches)

Genuine Leather

Tooled strap, removable buckle, Wrangler® iconic concho, antique silver hardware

\$109.95 AUD, \$130.95 NZD



Roxana Long Sleeve Blouse X6W2541555, Alyssa Belt X6W2986BLT, Laura High Rise Boot Cut Jean - Bailey XCP2255534 - 34" LEG



Brodie Hat (Silverton) XCP1961HAT,
Jaclyn Check Western Long Sleeve
Shirt X6W2127560, Emmaline Belt
X6W2988BLT, Laura High Rise Boot Cut
Jean - Bailey XCP2255534 - 34" LEG

Emmaline Belt

X6W2988BLT

28, 30, 32, 34, 36, 38, 40,
42, 44 (inches)

Genuine Leather

Tooled strap, dome studs, removable
buckle, Wrangler® iconic concho,
antique silver hardware

\$109.95 AUD, \$130.95 NZD



CHOCOLATE/
TURQUOISE





Brodie Hat (Silverton) XCP1961HAT,
Jewell Check Western Long Sleeve Shirt
X6W2127563, Savannah Belt X6W2989BLT,
Laura High Rise Boot Cut Jean - Bailey
XCP2255534 - 34" LEG

GENUINE
100%
LEATHER



LIGHT TAN

Savannah Belt

X6W2989BLT

28, 30, 32, 34, 36, 38, 40,
42, 44 (inches)

Genuine Leather

Tooled strap with cutout, contrast
handlace, removable feature buckle,
Wrangler® iconic concho, antique
silver hardware

\$129.95 AUD, \$155.95 NZD



GENUINE
100%
LEATHER

COFFEE

Jonas Belt

X6W1963BLT

28, 30, 32, 34, 36, 38, 40,
42, 44 (inches)

Genuine Leather

Contrast tabs with handlace detail,
feature conchos, removable buckle,
Wrangler® iconic concho, antique
silver hardware

\$129.95 AUD, \$155.95 NZD



Montana Hat XCP1956HAT, Erik Check Button
Down Long Sleeve Shirt X6W1115491, Jonas
Belt X6W1963BLT, 20X® Competition Relaxed
Jean (River Wash) 01MWXRW34



Montana Hat XCP1956HAT, Jacob Print Button Down Long Sleeve Shirt X6W1115490, Tatum Belt X6W1964BLT, Retro® Slim Straight Jean 88MWZJM34 - 34" LEG

Tatum Belt

X6W1964BLT

28, 30, 32, 34, 36, 38, 40,
42, 44 (inches)

Genuine Leather

Tooled tab ends, removable buckle,
Wrangler® iconic concho, antique
silver hardware

\$129.95 AUD, \$155.95 NZD



GENUINE
100%
LEATHER

TAN



GENUINE
100%
LEATHER



Brodie Hat (Chestnut) X6W1961HAT, Kyle Print Logo Western Long Sleeve Shirt X6W1111481, Memphis Belt X6W1965BLT, Reg Straight Leg Jean (Original Stone) XLR1200034 - 34" LEG



DARK TAN

Memphis Belt

X6W1965BLT

28, 30, 32, 34, 36, 38, 40, 42, 44 (inches)

Genuine Leather

Tooled strap, removable buckle, Wrangler® iconic logo buckle and concho, antique silver hardware

\$119.95 AUD, \$144.95 NZD



GENUINE
100%
LEATHER



GENUINE
100%
LEATHER



TAN

Kayson Belt

X6W1967BLT

28, 30, 32, 34, 36, 38, 40, 42, 44 (inches)

Genuine Leather

Tooled strap, leather lacing, removable buckle, Wrangler® iconic logo buckle and concho, antique silver hardware

\$129.95 AUD, \$155.95 NZD



TAN

Dale Belt

X6W1968BLT

28, 30, 32, 34, 36, 38, 40, 42, 44 (inches)

Genuine Leather

Tooled strap, removable buckle, Wrangler® iconic conchos, antique silver hardware

\$129.95 AUD, \$155.95 NZD



LEATHER WALLETS

EMBRACE THE RUGGED ELEGANCE OF THE WEST WITH OUR LEATHER WALLETS.
KEEP YOUR ESSENTIALS CLOSE WHILE CARRYING A PIECE OF WESTERN HERITAGE WITH YOU.

Luke Embroidered Long Sleeve Shirt X6W1111494,
Tatum Belt X6W1964BLT, Marlo Rodeo Wallet X6W1976WLT,
Reg Straight Leg Jean (Original Rinse) XLR1200034 - 34" LEG



FRONT



TAN



BACK

Marlo Wallet

X6W1975WLT

One Size - 11.5cm (W) x 9cm (H)

Genuine Leather

Bifold closure, tooled front panel, contrast handlace, 6 x card slots and 1 x ID slot, 2 x note pockets, coin pocket with snap closure, 1 x zip pocket, Wrangler® iconic logo concho, **RFID PROTECT** technology protects your credit cards from fraud and identity theft

\$119.95 AUD, \$144.95 NZD



FRONT



TAN



BACK

Marlo Rodeo Wallet

X6W1976WLT

One Size - 9.5cm (W) x 18cm (H)

Genuine Leather

Bifold closure, tooled front panel, contrast handlace, 6 x card slots and 1 x ID slot, 3 x note pockets, 1 x zip pocket, Wrangler® iconic logo concho, **RFID PROTECT** technology protects your credit cards from fraud and identity theft

\$119.95 AUD, \$144.95 NZD





WORN TO BE WILD

Brodie Hat (Silverton) XCP1961HAT, Jewell Check Western Long Sleeve Shirt X6W2127563,
Savannah Belt X6W2989BLT, Laura High Rise Boot Cut Jean - Bailey XCP2255534 - 34" LEG



Wrangler®

Thomas Cook Boot & Clothing Co. 8/100 Station Street, Nunawading, Victoria 3131 Australia

P 03 8872 7272 F 03 8872 7273 E sales@thomascook.com.au

Connect with us on  facebook.com/WranglerWesternAustralia  wranglerwesternau

View the full range at www.wrangler-western.com.au

Made under license from Kontoor Brands USA & HK. Distributed by Thomas Cook Boot & Clothing Co, Licensee.

X6WPGMAR26



9 348537 823411