



Thomas Cook®  
BOOT & CLOTHING CO.

4TH GENERATION AUSTRALIAN FAMILY  
OWNED COMPANY - CRAFTSMEN SINCE 1924



PRODUCT GUIDE  
AUTUMN/WINTER  
2026

*Thomas Cook*<sup>®</sup>

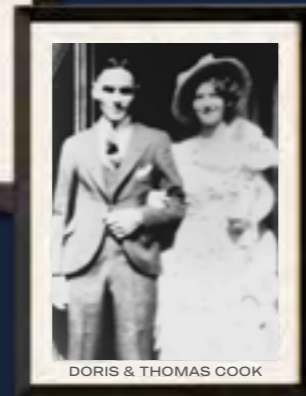
4<sup>TH</sup> GENERATION AUSTRALIAN FAMILY OWNED COMPANY

CRAFTSMEN SINCE 1924



MURRAY COOK (3rd Generation) THOMAS COOK (1st Generation) TOM COOK (2nd Generation)

Thomas Cook Snr. was born in 1908 in Walkaway near Geraldton, Western Australia. After the sudden passing of his mother, Thomas spent much of his childhood, from the age of four, growing up in a Salvation Army boys' home in Collie, WA. As a teenager, Thomas found work on a local dairy farm, which he described as his 'first happy years'.



DORIS & THOMAS COOK

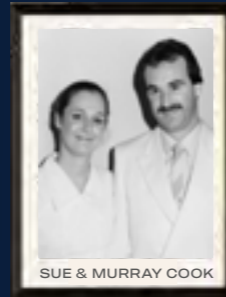
During this time, boxing also became his passion. After winning a major tournament in Bridgetown, WA, Thomas was told by a friend to try his luck at boxing in Melbourne. Thomas boarded a ship bound for Melbourne.



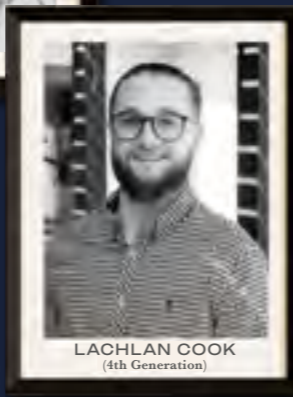
There, he was introduced to the world of boot making and got a job at the Joyce & Howe Boot Factory, where he met his future wife, Doris, who started in the boot trade in 1924 as a machinist at the age of 13½. Still competing regularly in boxing, Thomas fought 20 fights with only one loss. Over the ensuing weeks, he reflected on that loss and decided to stick to his day job. Thomas Cook hung up his gloves in the pursuit of a profession in boot making.



KAY & TOM COOK



SUE & MURRAY COOK



LACHLAN COOK (4th Generation)

Today, we carry on the legacy that Thomas Cook Senior started. More than just a name on the line, Thomas Cook Boot & Clothing Co., now in its 4th generation of the Cook family, stands for more than a century of hard work, of miles travelled, of relationships built, friendships forged and family. It stands for a promise of quality, innovation, comfort, and heritage.

*Thank you from our family to all our customers, for your loyal support throughout the years.*



She wears: Original Crushable Hat (Light Cream) TCP1900002, Mayfield Reversible Vest T6W2620056, Tamara Long Sleeve Shirt (Navy/White) T6W2110145, Julia Thermal Jean 32" Leg T6W2205102  
 He wears: Marcus Faux Oilskin Vest T6W1607173, Bryan Stripe Rugby T6W1503024, Gregory Stripe 1-Pocket Long Sleeve Shirt T6W1118043, Brad Thermal Comfort Waist Jean 32" Leg T6W1226102

WELCOME TO  
*Thomas Cook*<sup>®</sup>  
 AUTUMN/WINTER  
 2026



WOMENSWEAR 4



MENSWEAR 42



GIRLSWEAR 80



BOYSWEAR 90



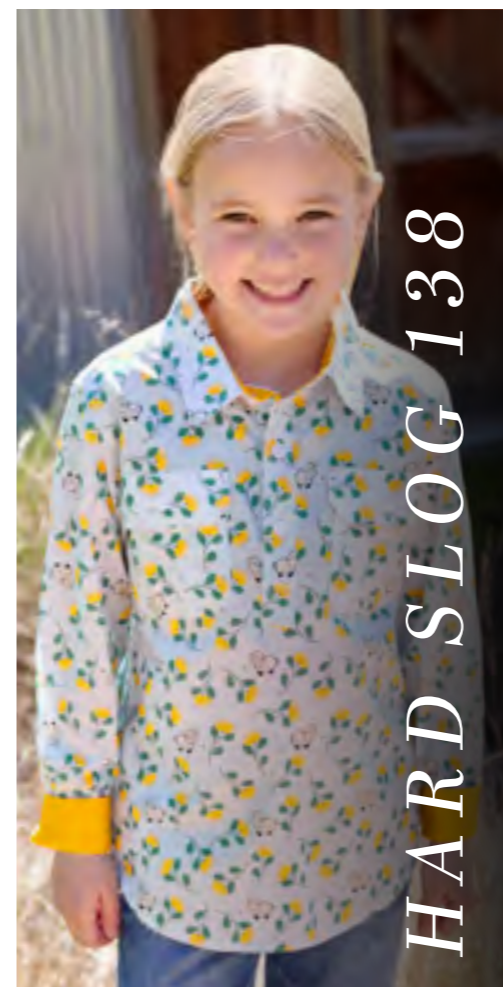
ACCESSORIES 100



FOOTWEAR 114



DUX-BAK 130



HARD SLOG 138

# CONTENTS

AUTUMN / WINTER 2026

4	Womenswear
42	Menswear
80	Girlsweat
90	Boyswear
100	Accessories
114	Footwear
130	Dux-Bak
138	Hard Slog
149	W26 Promotional Items



Front Cover Image:  
 She wears: Gemma 1/4 Zip Stripe Rugby T6W2527075, Serena Long Sleeve Shirt T6W2114064, Julia Thermal Jean 32" Leg T6W2205102  
 He wears: Bronco Hat (Brown) TCP1934002, Adrian Polar Fleece Vest TCP1615009, Vic Reversible 1/4 Zip Neck Jumper (Green/Navy) T6W1531173, Patrick Check 2-Pocket Long Sleeve Shirt T6W1115035, Brad Thermal Comfort Waist Jean 32" Leg T6W1226102



Back Cover Image: He wears: Louis Light Weight Oilskin Jacket T6W1707175, Brandon Stripe Rugby T6W1503017, Jeremy Tailored Long Sleeve Shirt T6W1121046, Brad Thermal Comfort Waist Jean 32" Leg T6W1226102, Gundaroo Duffle Bag TCP1980BAG, Trentham Cushion Tech E Fit (Chestnut) TCP18228  
 She wears: Madison Parka T6W2725055, Maya Stripe Knit Jumper T6W2546091, Julia Thermal Jean 32" Leg T6W2205102, Trentham Cushion Tech (Chestnut) TCP28320

*Thomas Cook*

OVER A CENTURY OF QUALITY CRAFTSMANSHIP

Please note: Standard Thomas Cook Boot & Clothing Co. Trading terms and conditions apply. All retail prices advertised throughout this book include GST and are subject to change with or without notification. Please note that colours may vary slightly in this catalogue to actual product.

Original garment and product designs are the intellectual property of Thomas Cook Boot & Clothing Co. Pty Ltd and are subject to copyright.

Location Photography by Neville Jones (Experiential Photography) and Laura Neumeister.

Special thanks to Deva and Mark for the use of their beautiful Eden Park property & assistance on the day.

Printed March 2026

[thomascook.com.au](http://thomascook.com.au)

# WOMENSWEAR



**This Page:** Kimberley Crushable Hat (Sand) TCP1937002, Judy Long Sleeve Shirt T6W2110059, Beth Knitted Cardigan T6W2565090

**Opposite Page:** Lucinda Long Sleeve Shirt T6W2118065, Tamara Belt T6W2970BEL, Julia Thermal Jean 32" Leg T6W2205102

AW26



 *Thomas Look*<sup>®</sup>

AUTUMN/WINTER 2026

Original Crushable Hat (Light Cream) TCP1900002, Serena Long Sleeve Shirt T6W2114064, Tamara Belt T6W2970BEL, Julia Thermal Jean 32" Leg T6W2205102



NAVY

**Women's Serena Long Sleeve Shirt**

T6W2114064

8, 10, 12, 14, 16, 18, 20, 22  
100% Cotton Poplin Print

Thomas Cook original hand drawn print, contrast gingham trims, grosgrain taping on inside neck and sleeve cuffs, pintuck detail at sleeve cuffs, criss cross embroidery on cuff pintucks, horseman embroidery on chest

\$129.95 AUD, \$155.95 NZD



BLUE/WHITE

**Women's Lucinda Long Sleeve Shirt**

T6W2118065

8, 10, 12, 14, 16, 18, 20, 22  
97% Cotton / 3% Elastane Sateen Print

Thomas Cook original hand drawn print, stretch for comfort and movement, contrast spot trims, grosgrain taping on inside neck, under placket and sleeve cuffs, pintuck detail at sleeve cuffs, criss cross embroidery on cuff pintucks, horseman embroidery on chest

\$129.95 AUD, \$155.95 NZD



GREEN/WHITE

**Women's Judy Long Sleeve Shirt**

T6W2110059

8, 10, 12, 14, 16, 18, 20, 22  
100% Cotton  
Yarn Dyed Check

Cotton yarn dyed check, contrast gingham trims, grosgrain taping on inside neck, under placket and sleeve cuffs, pintuck detail at sleeve cuffs, criss cross embroidery on cuff pintucks, horseman embroidery on chest

\$119.95 AUD, \$144.95 NZD

Judy Long Sleeve Shirt T6W2110059, Larissa Belt (Chocolate) TCP2949BEL, Julia Thermal Jean 32" Leg T6W2205102





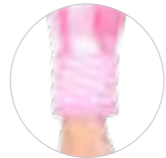
Tamara Long Sleeve Shirt (Pink/White) T6W2110145, Tamara Belt T6W2970BEL, Julia Thermal Jean 32" Leg T6W2205102



PINK/WHITE



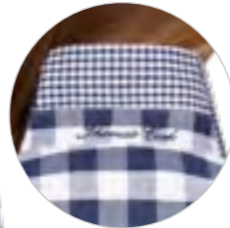
BACK COLLAR STAND EMBROIDERY



CONTRAST SLEEVE CUFF



NAVY/WHITE



BACK COLLAR STAND EMBROIDERY



CONTRAST SLEEVE CUFF

**Women's Tamara Long Sleeve Shirt**  
T6W2110145

8, 10, 12, 14, 16, 18, 20, 22  
100% Cotton Yarn Dyed Check

Cotton yarn dyed check textured fabric, contrast gingham trims, grosgrain taping on inside neck, under placket and sleeve cuffs, pintuck detail at sleeve cuffs, criss cross embroidery on cuff pintucks, horseman embroidery on chest

\$119.95 AUD, \$144.95 NZD



Martha Long Sleeve Shirt T6W2118066, Tamara Belt T6W2970BEL, Julia Thermal Jean 32" Leg T6W2205102

**Women's Martha Long Sleeve Shirt**  
T6W2118066

8, 10, 12, 14, 16, 18, 20, 22  
97% Cotton / 3% Elastane Sateen Print

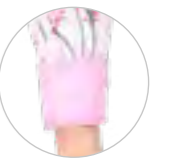
Thomas Cook original hand drawn print, stretch for comfort and movement, contrast gingham trims, grosgrain taping on inside neck, under placket and sleeve cuffs, pintuck detail at sleeve cuffs, criss cross embroidery on cuff pintucks, horseman embroidery on chest

PINK/WHITE

\$129.95 AUD, \$155.95 NZD



BACK COLLAR STAND EMBROIDERY



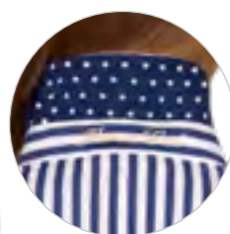
CONTRAST SLEEVE CUFF



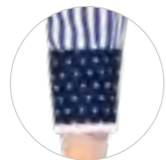
Celine Long Sleeve Shirt T6W2130085,  
Tamara Belt T6W2970BEL,  
Nova Denim Skirt T6W2400101



NAVY/WHITE



BACK COLLAR STAND EMBROIDERY



CONTRAST SLEEVE CUFF

**Women's Celine Long Sleeve Shirt**

T6W2130085

8, 10, 12, 14, 16, 18, 20, 22

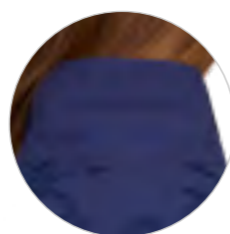
60% Cotton / 39% Polyester / 1% Metallic Yarn Dyed Stripe

Cotton blend yarn dyed stripe with metallic yarn feature, contrast spot trims, grosgrain taping on inside neck, under placket and sleeve cuffs, pintuck detail at sleeve cuffs, metallic horseman embroidery on chest

\$129.95 AUD, \$155.95 NZD



NAVY



BACK COLLAR STAND EMBROIDERY

**Women's Remy Long Sleeve Shirt**

T6W2123144

8, 10, 12, 14, 16, 18, 20, 22

100% Cotton

Featuring beautiful 3D floral embroidered fabric, grosgrain taping on inside neck and sleeve cuffs, soft gathers at sleeves and back yoke, Thomas Cook metal badge on side hem

\$139.95 AUD, \$169.95 NZD



Ariana Long Sleeve Shirt  
T6W2137131, Larissa Belt (Tan)  
TCP2949BEL, Julia Thermal  
Jean 32" Leg T6W2205102

**Women's Ariana Long Sleeve Shirt**

T6W2137131

8, 10, 12, 14, 16, 18, 20, 22

100% Viscose Print

Thomas Cook original hand drawn print, embroidered detail along placket and neck edge, soft gathers at sleeves, cuffs, front and back yoke, horseman embroidery on side hem

\$129.95 AUD, \$155.95 NZD



BACK COLLAR STAND EMBROIDERY

MULTI



Nora Long Sleeve Shirt T6W2130108,  
Larissa Belt (Chocolate) TCP2949BEL,  
Harriet Trousers 32" Leg T6W2227171

**Women's Nora Long Sleeve Shirt**

T6W2130108

8, 10, 12, 14, 16, 18, 20, 22  
100% Cotton Yarn Dyed Check

Cotton yarn dyed check textured fabric, contrast spot trims, grosgrain taping on inside neck, under placket and sleeve cuffs, soft gathers at sleeves, horseman embroidery on chest

BLUE/WHITE

\$119.95 AUD, \$144.95 NZD



BACK COLLAR STAND EMBROIDERY



CONTRAST SLEEVE CUFF



Narelle Long Sleeve Shirt  
T6W2124069, Julia Thermal  
Jean 32" Leg T6W2205102

**Women's Narelle Long Sleeve Shirt**

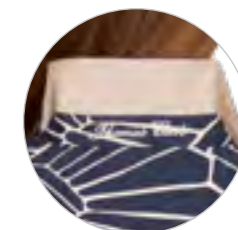
T6W2124069

8, 10, 12, 14, 16, 18, 20, 22  
100% Cotton Sateen Print

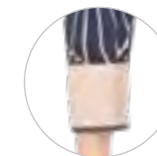
NAVY/TAN

Thomas Cook original hand drawn print, premium light weight cotton sateen fabric, criss cross centre back pleat detail, high low curve hem detail, contrast spot trims, grosgrain taping on inside neck and sleeve cuffs, horseman embroidery on side hem

\$129.95 AUD, \$155.95 NZD



BACK COLLAR STAND EMBROIDERY



CONTRAST SLEEVE CUFF



Sonia Long Sleeve Shirt  
T6W2124148, Julia Thermal Jean  
32" Leg T6W2205102



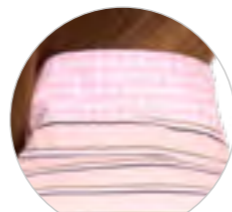
**Women's Sonia Long Sleeve Shirt**

T6W2124148

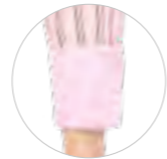
8, 10, 12, 14, 16, 18, 20, 22  
50% Cotton / 50% Lyocell  
Printed Stripe

PINK MULTI

Cotton blend printed stripe, criss cross centre back pleat detail, high low curve hem detail, contrast gingham trims, grosgrain taping on inside neck and sleeve cuffs, horseman embroidery on chest



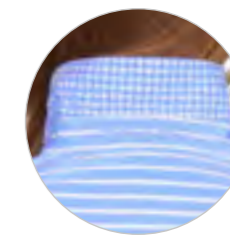
BACK COLLAR STAND EMBROIDERY



CONTRAST SLEEVE CUFF



\$129.95 AUD, \$155.95 NZD



BACK COLLAR STAND EMBROIDERY



CONTRAST SLEEVE CUFF



**Women's Esther Long Sleeve Shirt**

T6W2124068

8, 10, 12, 14, 16, 18, 20, 22  
100% Cotton Yarn Dyed Stripe

SKY BLUE

Cotton yarn dyed stripe, criss cross centre back pleat detail, high low curve hem detail, contrast gingham trims, grosgrain taping on inside neck and sleeve cuffs, horseman embroidery on chest

\$129.95 AUD, \$155.95 NZD



BACK COLLAR STAND EMBROIDERY



CONTRAST SLEEVE CUFF



BLUE

**Women's Evie Long Sleeve Shirt**

T6W2114104

8, 10, 12, 14, 16, 18, 20, 22  
80% Cotton / 20% Lyocell  
Fine Cord

Premium baby corduroy with soft handfeel, contrast stripe trims, grosgrain taping on inside neck, under placket and sleeve cuffs, horseman embroidery on chest

\$119.95 AUD, \$144.95 NZD



GATHERED FRILL NECKLINE DETAIL

SAGE

**Women's Riley Long Sleeve Blouse**

T6W2130109

8, 10, 12, 14, 16, 18, 20, 22  
100% Viscose

Premium embroidered fabric with soft handfeel, grosgrain taping on inside neck and sleeve cuffs, soft gathers at front and back yoke, Thomas Cook metal badge on side hem

\$139.95 AUD, \$169.95 NZD



Sonia Long Sleeve Shirt T6W2124148,  
Lydia 1/4 Zip Rugby TCP2528082, Julia  
Thermal Jean 32" Leg T6W2205102



BACK COLLAR STAND  
EMBROIDERY

MULTI

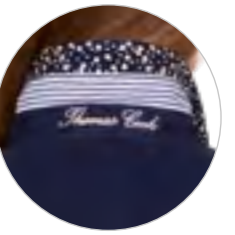
**Women's Vivian  
Stripe Rugby**

T6W2506072

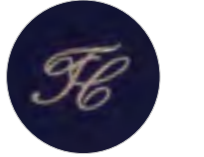
8, 10, 12, 14, 16, 18, 20, 22  
100% Cotton Rugby Jersey  
Yarn Dyed Stripe, Peached,  
330gsm

Heavyweight jersey knit rugby, long  
sleeves with rib cuffs, cotton drill  
collar with contrast underside detail  
and embroidery, contrast gingham  
trims, inside placket with concealed  
buttons, contrast taping on inside  
neck, horseman embroidery on chest

\$139.95 AUD, \$169.95 NZD



BACK COLLAR STAND  
EMBROIDERY



CHEST METALLIC  
EMBROIDERY

NAVY

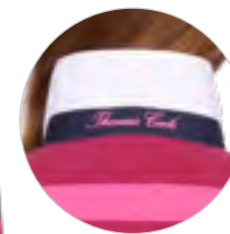
**Women's  
Emilia Rugby**

T6W2506070

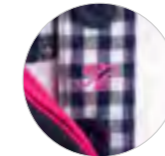
8, 10, 12, 14, 16, 18, 20, 22  
100% Cotton Rugby  
Jersey, Peached, 330gsm

Heavyweight jersey knit rugby,  
long sleeves with rib cuffs, cotton  
drill collar with printed underside  
detail and embroidery, contrast  
stripe trims, inside placket with  
concealed buttons

\$139.95 AUD, \$169.95 NZD



BACK COLLAR STAND  
EMBROIDERY



PLACKET  
EMBROIDERY

PINK MULTI

**Women's Faye  
Stripe Rugby**

T6W2506071

8, 10, 12, 14, 16, 18, 20, 22  
100% Cotton Rugby Jersey  
Yarn Dyed Stripe, Peached,  
330gsm

Heavyweight jersey knit rugby, long  
sleeves with rib cuffs, cotton drill  
collar with contrast underside detail  
and embroidery, contrast gingham  
trims, contrast placket with concealed  
buttons, contrast taping on inside  
neck, horseman embroidery on chest

\$139.95 AUD, \$169.95 NZD



Original Crushable Hat (Light  
Cream) TCP1900002, Faye Stripe  
Rugby T6W2506071, Tamara  
Long Sleeve Shirt (Navy/White)  
T6W2110145



BACK COLLAR STAND EMBROIDERY

GREEN MULTI

**Women's Embery Stripe Rugby**

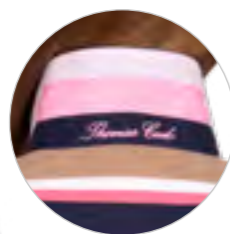
T6W2506073

8, 10, 12, 14, 16, 18, 20, 22

100% Cotton Rugby Jersey Yarn Dyed Stripe, Peached, 330gsm

Heavyweight jersey knit rugby, long sleeves with rib cuffs, cotton drill collar with contrast underside detail and embroidery, contrast gingham trims, contrast inside placket with concealed buttons, contrast taping on inside neck, horseman embroidery on chest

\$139.95 AUD, \$169.95 NZD



BACK COLLAR STAND EMBROIDERY

TAN/PINK

**Women's Ruth Stripe Rugby**

T6W2506074

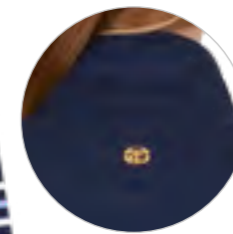
8, 10, 12, 14, 16, 18, 20, 22

100% Cotton Rugby Jersey Yarn Dyed Stripe, Peached, 330gsm

Heavyweight jersey knit rugby, long sleeves with rib cuffs, cotton drill collar with contrast underside detail and embroidery, contrast stripe trims, contrast inside placket with concealed buttons, contrast taping on inside neck, horseman embroidery on chest

\$139.95 AUD, \$169.95 NZD

Ruth Stripe Rugby T6W2506074, Tamara Long Sleeve Shirt (Pink/White) T6W2110145, Julia Thermal Jean 32" Leg T6W2205102



BACK NECK TC METAL LOGO



CONTRAST SLEEVE CUFF

BLUE/NAVY

**Women's Lexi 1/4 Zip Stripe Rugby**

T6W2527078

8, 10, 12, 14, 16, 18, 20, 22

98% Cotton / 2% Elastane French Terry Yarn Dyed Stripe, 330gsm

Heavyweight french terry stretch knit rugby, stretch for comfort and movement, 1/4 placket with premium quality metal zip closure, rib inner collar facing, contrast taping on inside neck and side seam splits, front concealed pockets, horseman embroidery on chest

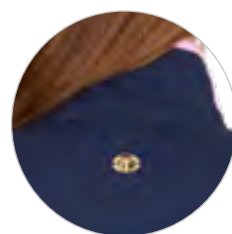
\$139.95 AUD, \$169.95 NZD



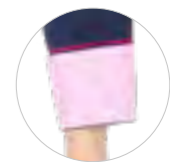
Lexi 1/4 Zip Stripe Rugby T6W2527078, Nora Long Sleeve Shirt T6W2130108, Harriet Trouser 32" Leg T6W2227171



Gemma 1/4 Zip Stripe Rugby T6W2527075, Serena Long Sleeve Shirt T6W2114064, Julia Thermal Jean 32" Leg T6W2205102



BACK NECK TC METAL LOGO



CONTRAST SLEEVE CUFF

PINK/NAVY

**Women's Gemma 1/4 Zip Stripe Rugby**

T6W2527075

8, 10, 12, 14, 16, 18, 20, 22

98% Cotton / 2% Elastane French Terry Yarn Dyed Stripe, 330gsm

Heavyweight french terry stretch knit rugby, stretch for comfort and movement, 1/4 placket with premium quality metal zip closure, contrast spot trims, contrast taping on inside neck and side seam splits, front welt pockets, horseman embroidery on chest

\$139.95 AUD, \$169.95 NZD



NAVY/WHITE

**Women's Ava  
1/4 Zip Stripe Rugby**

T6W2527077

8, 10, 12, 14, 16, 18, 20, 22  
98% Cotton / 2% Elastane  
French Terry Yarn Dyed  
Stripe, 330gsm

Heavyweight french terry stretch knit rugby, stretch for comfort and movement, 1/4 placket with premium quality metal zip closure, contrast spot trims, contrast taping on inside neck and side seam splits, front welt pockets, horseman embroidery on chest

\$139.95 AUD, \$169.95 NZD



NAVY/TAN

**Women's Hannah  
Stripe Rugby**

T6W2528081

8, 10, 12, 14, 16, 18, 20, 22  
80% Cotton /  
20% Polyester Brushed  
Fleece Yarn Dyed Stripe,  
345gsm

Heavyweight brushed fleece, contrast metallic spot trims, metal snap placket closure, contrast taping on inside neck and side seam splits, front concealed pockets, metallic horseman embroidery on chest

\$139.95 AUD, \$169.95 NZD



PINK

**Women's  
Sammy Rugby**

T6W2528080

8, 10, 12, 14, 16, 18, 20, 22  
80% Cotton /  
20% Polyester Brushed  
Fleece, 345gsm

Heavyweight brushed fleece, button up collar, contrast spot trims, contrast taping on inside neck and side seam splits, corded piping detail, front welt pockets, rib cuffs, horseman embroidery on chest

\$139.95 AUD, \$169.95 NZD



TAUPE MARLE

**Women's Lydia  
1/4 Zip Rugby**

TCP2528082

8, 10, 12, 14, 16, 18, 20, 22  
80% Cotton /  
20% Polyester Brushed  
Fleece, 345gsm

Heavyweight brushed fleece, 1/4 placket with premium quality metal zip closure, contrast gingham trims, contrast taping on inside neck and side seam splits, front welt pockets, horseman embroidery on chest

**NEW TO STOCKLINES**

\$139.95 AUD, \$169.95 NZD



Jane 1/4 Zip Stripe Rugby  
T6W2527079, Ariana Long Sleeve  
Shirt T6W2137131, Julia Thermal  
Jean 32" Leg T6W2205102



**Women's Jane 1/4 Zip Stripe Rugby**

T6W2527079

8, 10, 12, 14, 16, 18, 20, 22  
80% Cotton / 20% Polyester Brushed Fleece  
Yarn Dyed Stripe, 345gsm

Heavyweight brushed fleece, 1/4 placket with premium quality metal zip closure, contrast stripe trims, contrast taping on inside neck and side seam splits, front welt pockets, horseman embroidery on chest

CHARCOAL MARLE

\$139.95 AUD, \$169.95 NZD



Eloise Stripe Knit Jumper  
T6W2566099, Julia Thermal  
Jean 32" Leg T6W2205102



NAVY



PINK



CHEST EMBROIDERY



**Women's Sally Crew**

TCP2558083

8, 10, 12, 14, 16, 18, 20, 22

80% Cotton / 20% Polyester Brushed Fleece,  
345gsm

NEW TO STOCKLINES

\$99.95 AUD, \$121.95 NZD

Heavy weight brushed fleece, large feature chest embroidery, contrast taping on inside neck and side seam splits, horseman embroidery on side hem, rib cuff and hem



TAUPE



**Women's Layla Cable Knit Jumper**

T6W2502097

8, 10, 12, 14, 16, 18, 20, 22

55% Merino Wool /  
45% Cotton, 5 Gauge

Midweight fully fashioned cable knit, Australian merino wool blend, rib neck, cuffs and hem to keep shape, side seam splits, TC metal logo on side hem

\$159.95 AUD, \$192.95 NZD



MULTI



**Women's Eloise Stripe Knit Jumper**

T6W2566099

8, 10, 12, 14, 16, 18, 20, 22

49% Nylon / 41% Acrylic /  
10% Wool, 5 Gauge

Fully fashioned block stripe knit, wool blend, unique cable design, contrast taping on inside neck, rib neck, cuffs and hem to keep shape, TC metal logo on side hem

\$129.95 AUD, \$155.95 NZD



Gracie Stripe Knit Jumper T6W2548098,  
Becky Corduroy Pant 32" Leg T6W2209100

**Women's Gracie Stripe Knit Jumper**  
T6W2548098

8, 10, 12, 14, 16, 18, 20, 22  
62% Polyester / 26% Acrylic /  
7% Nylon / 5% Wool, 7 Gauge

NAVY/CREAM

Fully fashioned stripe knit, wool blend, metallic stripe yarn feature, contrast taping on inside neck, rib neck, cuffs and hem to keep shape, side seam splits, TC metal logo on side hem



\$119.95 AUD, \$144.95 NZD



NAVY

**Women's Jacinta Knit Jumper**  
T6W2567088

8, 10, 12, 14, 16, 18, 20, 22  
100% Merino Wool,  
7 Gauge

Fully fashioned knit with collar, 100% Australian merino wool, rib cuffs and hem to keep shape, TC metal logo on side hem

\$159.95 AUD, \$192.95 NZD



Jacinta Knit Jumper  
T6W2567088, Julia  
Thermal Jean 32" Leg  
T6W2205102



Luna 1/4 Zip Stripe Knit  
Jumper T6W2563096,  
Lucinda Long Sleeve Shirt  
T6W2118065, Julia Thermal  
Jean 32" Leg T6W2205102



TAN MARLE

**Women's Luna 1/4 Zip Stripe Knit Jumper**  
T6W2563096

8, 10, 12, 14, 16, 18, 20, 22  
37% Cotton /  
34% Polyacrylic /  
26% Polyester /  
3% Elastane, 5 Gauge

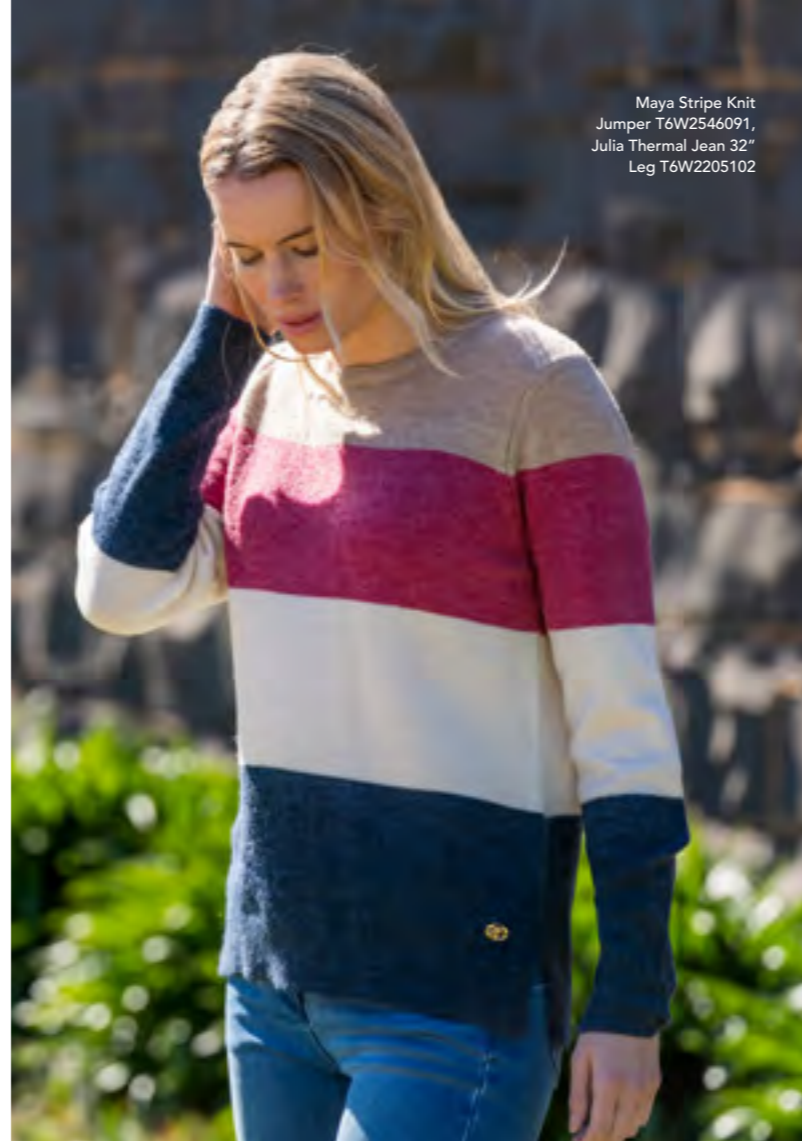
Lightweight fully fashioned knit, centre front cable detail, rib collar, cuffs and hem to keep shape, 1/4 placket with premium quality metal zip closure, contrast taping on inside neck, TC metal logo on side hem

\$129.95 AUD, \$155.95 NZD

PRICES ARE RRP



Carly Knit Jumper  
T6W2553087,  
Martha Long Sleeve  
Shirt T6W2118066,  
Julia Thermal  
Jean 32" Leg  
T6W2205102



Maya Stripe Knit  
Jumper T6W2546091,  
Julia Thermal Jean 32"  
Leg T6W2205102



Amelia Stripe Knit Jumper  
T6W2553089, Harriet Trouser  
32" Leg T6W2227171



RASPBERRY

**Women's Carly  
Knit Jumper**

T6W2553087

8, 10, 12, 14, 16, 18, 20, 22  
60% Acrylic / 20% Nylon /  
20% Wool, 7 Gauge

Midweight fully fashioned  
unique cable knit, wool blend,  
contemporary styling, rib neck,  
cuffs and hem to keep shape,  
side seam splits, TC metal logo  
on side hem

\$129.95 AUD, \$155.95 NZD



RASPBERRY/MULTI

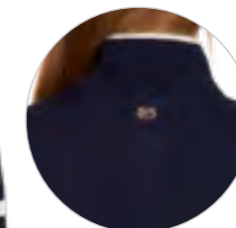
**Women's Maya  
Stripe Knit Jumper**

T6W2546091

8, 10, 12, 14, 16, 18, 20, 22  
34% Acrylic / 33% Nylon /  
30% Wool / 3% Elastane,  
7 Gauge

Lightweight fully fashioned block  
stripe knit, wool blend, rib neck,  
cuffs and hem to keep shape, contrast  
taping on inside neck, side seam  
splits, TC metal logo on side hem

\$129.95 AUD, \$155.95 NZD



BACK NECK  
TC METAL LOGO



NAVY

**Women's Jeanette 1/4  
Zip Stripe Knit Jumper**

T6W2505061

8, 10, 12, 14, 16, 18, 20, 22  
45% Merino Wool /  
45% Acrylic /  
10% Metallic Yarn,  
12 Gauge

Midweight fully fashioned stripe knit  
with metallic yarn, Australian merino  
wool blend, rib collar, cuffs and  
hem to keep shape, 1/4 placket with  
premium quality metal zip closure,  
contrast taping on inside neck,  
contrast tipping along collar and cuff  
edges, horseman embroidery on chest

\$149.95 AUD, \$179.95 NZD



WOOLMARK  
PURE MERINO WOOL

GREEN/NAVY

**Women's Amelia  
Stripe Knit Jumper**

T6W2553089

8, 10, 12, 14, 16, 18, 20, 22  
100% Merino Wool,  
7 Gauge

Fully fashioned block stripe knit,  
100% Australian merino wool, polo  
collar with button fastening, rib  
cuffs and hem to keep shape,  
TC metal logo on side hem

\$159.95 AUD, \$192.95 NZD



Beth Knitted Cardigan T6W2565090,  
Judy Long Sleeve Shirt T6W2110059,  
Larissa Belt (Chocolate) TCP2949BEL, Julia  
Thermal Jean 32" Leg T6W2205102

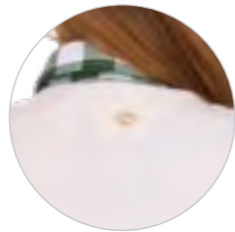
**Women's Beth Knitted Cardigan**  
T6W2565090

8, 10, 12, 14, 16, 18, 20, 22  
57% Polyester / 24% Acrylic /  
10% Wool / 9% Nylon, 7 Gauge

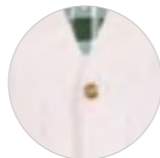
CREAM

Fully fashioned knitted cardigan,  
wool blend, unique cable design,  
rib cuffs and hem to keep shape

\$199.95 AUD, \$240.95 NZD



BACK NECK  
TC METAL LOGO



ONE BUTTON  
CLOSURE



VESTS & JACKETS





Kerry Vest T6W2620057, Lucinda Long Sleeve Shirt T6W2118065, Tamara Belt T6W2970BEL, Julia Thermal Jean 32" Leg T6W2205102

**Women's Kerry Vest**

T6W2620057

XS, S, M, L, XL, XXL, 3XL  
Shell: 100% Polyester  
Lining: 100% Polyester

SAGE

Lightweight diamond quilt vest in water repellent fabric, rust proof metal accessories, premium quality zip closures, front side pockets, quilted waist shaping to flatter the figure, TC metal logo on back neck



\$139.95 AUD, \$169.95 NZD



COMPACT DESIGN - PACKS INTO POCKET



**Women's Oberon Light Weight Down Vest**

T6W2618174

XS, S, M, L, XL, XXL, 3XL  
Shell: 100% Nylon  
Filling: 90% Down / 10% Feather

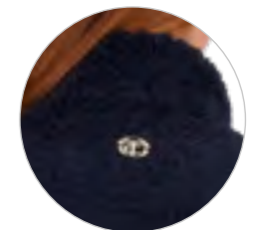
NAVY

Experience the weightlessness and compressibility that comes with the Thomas Cook down products, 90% down and 10% feather ultra light filling provides superior warmth, water repellent finish, compressible to be folded into internal pocket for easy packing and travelling, seamless quilting detail, detachable hood, elasticated hem and armhole openings seals out the cold, panelling detail with in-seam pockets and zips, front pockets with corded piping, lined for warmth, internal chest pocket, horseman print on chest, winter necessity

\$179.95 AUD, \$217.95 NZD



BACK NECK EMBROIDERY



BACK NECK TC METAL LOGO



**Women's Astrid Reversible Vest**

T6W2616058

XS, S, M, L, XL, XXL, 3XL  
Shell: 100% Polyester  
Lining: 100% Polyester

TAN/NAVY

Reversible vest, diamond quilted on one side and sherpa on the other, rust proof metal accessories, premium quality zip closures, welt pockets

\$169.95 AUD, \$204.95 NZD

Original Crushable Hat (Light Cream)  
 TCP1900002, Mayfield Reversible Vest  
 T6W2620056, Tamara Long Sleeve  
 Shirt (Navy/White) T6W2110145, Julia  
 Thermal Jean 32" Leg T6W2205102



**Women's Mayfield Reversible Vest**

T6W2620056

XS, S, M, L, XL, XXL, 3XL  
 Shell: 100% Polyester  
 Lining: 100% Polyester

HOT PINK/NAVY

Reversible lightweight vest in water repellent fabric, unique quilting design at front and back, rust proof metal accessories, premium quality zip closures, front zip pockets, quilted waist shaping to flatter the figure



\$179.95 AUD, \$217.95 NZD

Peta Jacket T6W2712053,  
 Eloise Stripe Knit Jumper  
 T6W2566099, Julia Thermal  
 Jean 32" Leg T6W2205102



**Women's Peta Jacket**

T6W2712053

XS, S, M, L, XL, XXL, 3XL  
 Shell: 100% Polyester  
 Lining: 100% Polyester

TAN

Lightweight diamond quilted body and sleeves, quilted waist shaping to flatter the figure, mock waist tab, rust proof metal accessories, premium quality zip closures, detachable hood, sherpa body and hood lining, front side pockets with snap closure, TC metal logo on hood



\$199.95 AUD, \$240.95 NZD



COMPACT DESIGN -  
PACKS INTO POCKET



**Women's Oberon Light Weight Down Jacket**

T6W2718174

XS, S, M, L, XL, XXL, 3XL

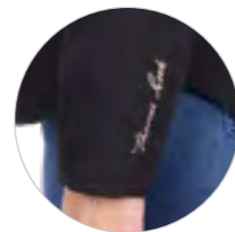
Shell: 100% Nylon

Filling: 90% Down / 10% Feather

NAVY

Experience the weightlessness and compressibility that comes with the Thomas Cook down products, 90% down and 10% feather ultra light filling provides superior warmth, water repellent finish, compressible to be folded into internal pocket for easy packing and travelling, seamless quilting detail, detachable hood, elasticated hem and sleeve openings seals out the cold, panelling detail with in-seam pockets and zips, front pockets with corded piping, lined for warmth, internal pockets, horseman print on chest, winter necessity

\$239.95 AUD, \$291.95 NZD



SLEEVE HEM SCRIPT EMBROIDERY



**Women's Audrey Softshell Jacket**

TCP2735051

XS, S, M, L, XL, XXL, 3XL

Shell: 92% Polyester /

8% Elastane Soft Shell

Lining: 100% Polyester

BLACK

Water repellent softshell fabric bonded with faux fur, detachable hood, rust proof metal accessories, premium quality zip closures, adjustable waist tabs, hidden sleeve cuffs to keep in the warm, TC metal logo on hood, horseman embroidery on chest

**NEW TO STOCKLINES**

\$199.95 AUD, \$240.95 NZD



Olivia Jacket T6W2724052, Carly  
Knit Jumper T6W2553087, Martha  
Long Sleeve Shirt T6W2118066, Julia  
Thermal Jean 32" Leg T6W2205102

**Women's Olivia Jacket**

T6W2724052

XS, S, M, L, XL, XXL, 3XL

Shell: 100% Polyester

Lining: 100% Polyester

NAVY

Water repellent textured fabric, unique quilted front, back and sleeves, rust proof metal accessories, premium quality zip closures, detachable hood with detachable faux fur trim, front zip pockets, storm flap, quilted waist shaping to flatter the figure, TC internal trims and pockets, TC metal logo on hood, horseman embroidery on side hem

\$274.95 AUD, \$333.95 NZD



SLEEVE HEM SCRIPT EMBROIDERY



HOOD



Madison Parka T6W2725055,  
Maya Stripe Knit Jumper  
T6W2546091, Julia Thermal  
Jean 32" Leg T6W2205102



**Women's Madison Parka**

T6W2725055

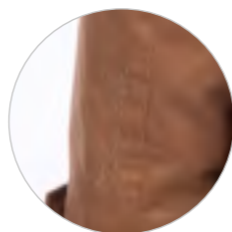
XS, S, M, L, XL, XXL, 3XL

Shell: 100% Cotton

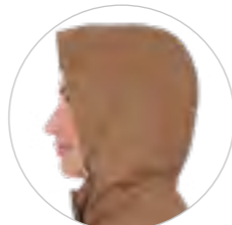
Lining: 100% Polyester

DARK TAN

Water repellent cotton coated fabric, premium faux fur lining, detachable hood, storm flap, rust proof metal accessories, premium quality zip closures, internal waist drawcord to draw in and flatter the figure, hidden rib sleeve cuffs to keep in the warm, adjustable sleeve tabs, patch pockets with side hand warmers, TC internal trims and pockets, TC metal logo on hood, horseman embroidery on chest



SLEEVE HEM SCRIPT EMBROIDERY



HOOD



\$249.95 AUD, \$305.95 NZD

**BOTTOMS**



Amelia Stripe Knit Jumper T6W2553089,  
Harriet Trousers 32" Leg T6W2227171,  
Trentham Cushion Tech TCP28320





Tamara Long Sleeve Shirt (Pink/White)  
T6W2110145, Tamara Belt T6W2970BEL,  
Julia Thermal Jean 32" Leg T6W2205102,  
Trentham Cushion Tech TCP28320



FRONT POCKET  
HORSEMAN EMBROIDERY



MOCK LEATHER  
BADGE

**Women's Julia Thermal Jean 32" Leg**

T6W2205102

8, 9, 10, 11, 12, 13, 14, 15, 16, 18, 20, 22  
70% Cotton / 28% Polyester / 2% Elastane, 13oz

LIGHT WASH

Slim leg fit, underside of fabric with brushing for warm thermal qualities, breathable, stretch for comfort and movement, No-Gap elastic waistband, double stitched for strength

\$119.95 AUD, \$146.95 NZD



Gracie Stripe Knit Jumper  
T6W2548098, Becky  
Corduroy Pant 32" Leg  
T6W2209100, Trentham  
Cushion Tech TCP28320



FOB POCKET  
HORSEMAN EMBROIDERY



MOCK LEATHER  
BADGE

**Women's Becky Corduroy Pant 32" Leg**

T6W2209100

8, 10, 12, 14, 16, 18, 20, 22  
98% Cotton / 2% Elastane, 8oz

GREYSTONE

Slim leg fit, high quality winter daily essential with soft handfeel, stretch for comfort and movement, No-Gap elastic waistband, double stitched for strength, rust proof metal accessories, YKK zipper

\$129.95 AUD, \$155.95 NZD





MOCK LEATHER BADGE



COIN POCKET HORSEMAN EMBROIDERY

**Women's Harriet Trousers 30" Leg**

T6W2226171

8, 9, 10, 11, 12, 13, 14, 15, 16, 18, 20, 22  
69% Cotton / 19% Polyester / 10% Wool / 2% Elastane, 11oz

NAVY

30" leg - Trousers jean, coloured denim with added wool, brushed for softer handfeel and warm thermal qualities, stretch for comfort and movement, mid rise, No-Gap elastic waistband, more room at the knee and a gradual opening down the leg, double stitched for strength, rust proof metal accessories, YKK zipper

\$149.95 AUD, \$179.95 NZD



MOCK LEATHER BADGE



COIN POCKET HORSEMAN EMBROIDERY

**Women's Harriet Trousers 32" Leg**

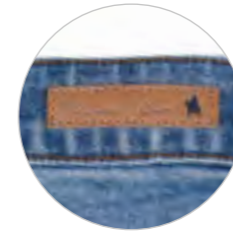
T6W2227171

8, 9, 10, 11, 12, 13, 14, 15, 16, 18, 20, 22  
69% Cotton / 19% Polyester / 10% Wool / 2% Elastane, 11oz

BLACK

32" leg - Trousers jean, coloured denim with added wool, brushed for softer handfeel and warm thermal qualities, stretch for comfort and movement, mid rise, No-Gap elastic waistband, more room at the knee and a gradual opening down the leg, double stitched for strength, rust proof metal accessories, YKK zipper

\$149.95 AUD, \$179.95 NZD



MOCK LEATHER BADGE



FRONT SIDE POCKET HORSEMAN EMBROIDERY



**Women's Nova Denim Skirt**

T6W2400101

8, 10, 12, 14, 16, 18, 20, 22  
99% Cotton / 1% Elastane, 12oz

LIGHT WASH

Stretch for comfort and movement, No-Gap elastic waistband, front side pockets, front centre bottom split for ease of movement, midi length, rust proof metal accessories, YKK zipper

\$119.95 AUD, \$144.95 NZD



Celine Long Sleeve Shirt T6W2130085,  
Tamara Belt T6W2970BEL,  
Nova Denim Skirt T6W2400101,  
Drayton Boot TCP28509

# MENSWEAR



This Page: Bronco Hat (Dark Brown) TCP1934002, Jeremy Tailored Long Sleeve Shirt T6W1121046, Kingsley Belt (Black) T6W1963BEL, Brad Thermal Comfort Waist Jean 32" Leg T6W1226102

Opposite Page: Andrew Check 1-Pocket Long Sleeve Shirt T6W1118044, Croc Twin Keeper Belt (Chocolate) TCP1962BEL, Stretch Moleskin Jean Mid-Reg-Straight 34" Leg (Sand) TCP1241007

AW26



 *Thomas Look*®

AUTUMN/WINTER 2026



Anthony Check Tailored Long Sleeve Shirt T6W1121050, Croc Twin Keeper Belt (Chocolate) T6W1962BEL, Stretch Moleskin Jean Mid-Reg-Straight 34" Leg (Sand) TCP1241007



Charles Check Tailored Long Sleeve Shirt T6W1121049, Heritage Belt TCP1959BEL, Brad Thermal Comfort Waist Jean 32" Leg T6W1226102, Gundaroo Duffle Bag TCP1980BAG, Trentham Cushion Tec EEE Fit (Chestnut) TCP18193



NAVY/WHITE

**Men's Anthony Check Tailored Long Sleeve Shirt**

T6W1121050

XS, S, M, L, XL, XXL, 3XL  
98% Cotton / 2% Elastane  
Yarn Dyed Check

Tailored fit long sleeve shirt, easy-care fabrication, stretch for comfort and movement, contrast chambray facing on inside collar stand, internal neck stripe taping, concealed collar peak buttons, removable collar stays, horseman embroidery on chest

\$109.95 AUD, \$132.95 NZD



NAVY/GREEN

**Men's Charles Check Tailored Long Sleeve Shirt**

T6W1121049

XS, S, M, L, XL, XXL, 3XL  
98% Cotton / 2% Elastane  
Yarn Dyed Check

Tailored fit long sleeve shirt, easy-care fabrication, stretch for comfort and movement, contrast chambray facing on inside collar stand, internal neck stripe taping, concealed collar peak buttons, removable collar stays, horseman embroidery on chest

\$109.95 AUD, \$132.95 NZD



Jeremy Tailored Long Sleeve Shirt  
T6W1121046, Croc Twin Keeper  
Belt (Black) TCP1962BEL,  
Brad Thermal Comfort Waist Jean  
32" Leg T6W1226102



NAVY/BLUE

**Men's Ryan  
Check Tailored  
Long Sleeve Shirt**

T6W1121047

XS, S, M, L, XL, XXL, 3XL  
98% Cotton / 2% Elastane  
Yarn Dyed Check

Tailored fit long sleeve shirt, easy-care fabrication, stretch for comfort and movement, contrast chambray facing on inside collar stand, internal neck stripe taping, concealed collar peak buttons, removable collar stays, horseman embroidery on chest

\$109.95 AUD, \$132.95 NZD



CONTRAST  
SLEEVE CUFF

MOCK LEATHER  
HEM LABEL



CHAMBRAY

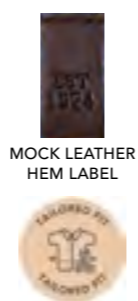
**Men's Jeremy  
Tailored Long  
Sleeve Shirt**

T6W1121046

XS, S, M, L, XL, XXL, 3XL  
98% Cotton / 2% Elastane  
Chambray

Tailored fit long sleeve shirt, stretch for comfort and movement, internal neck stripe taping, concealed collar peak buttons, removable collar stays, horseman embroidery on chest

\$109.95 AUD, \$132.95 NZD



MOCK LEATHER  
HEM LABEL



NAVY/BLUE

**Men's Andrew  
Check 1-Pocket  
Long Sleeve Shirt**

T6W1118044

S, M, L, XL, XXL, 3XL, 4XL  
100% Cotton  
Yarn Dyed Check

1-Pocket long sleeve shirt, easy-care fabrication, contrast chambray facing on inside collar stand, long shirt tail, back pleat for comfort and movement, concealed collar peak buttons, removable collar stays, horseman embroidery on chest pocket

\$109.95 AUD, \$132.95 NZD



CONTRAST  
SLEEVE CUFF



NAVY

**Men's Gregory  
Stripe 1-Pocket  
Long Sleeve Shirt**

T6W1118043

S, M, L, XL, XXL, 3XL, 4XL  
100% Cotton Stripe

1-Pocket long sleeve shirt, easy-care fabrication, contrast chambray facing on inside collar stand, long shirt tail, back pleat for comfort and movement, concealed collar peak buttons, removable collar stays, horseman embroidery on chest pocket

\$109.95 AUD, \$132.95 NZD



CONTRAST  
SLEEVE CUFF



Bronco Hat (Black) TCP1934002, Gregory Stripe 1-Pocket Long Sleeve  
Shirt T6W1118043, Kingsley Belt (Black) T6W1963BEL,  
Brad Thermal Comfort Waist Jean 32" Leg T6W1226102



NAVY/GREEN

**Men's Kevin Print 1-Pocket Long Sleeve Shirt**

T6W1118042

S, M, L, XL, XXL, 3XL, 4XL  
100% Cotton Print

1-Pocket long sleeve shirt, easy-care fabrication, contrast chambray facing on inside collar stand, long shirt tail, back pleat for comfort and movement, concealed collar peak buttons, removable collar stays, horseman embroidery on chest pocket

\$109.95 AUD, \$132.95 NZD



NAVY/GREEN

**Men's Chad Check 2-Pocket Long Sleeve Shirt**

T6W1115041

S, M, L, XL, XXL, 3XL, 4XL  
100% Cotton  
Yarn Dyed Check

2-Pocket long sleeve shirt, one with pen holder, long shirt tail, back pleat for comfort and movement, concealed collar peak buttons, removable collar stays, horseman embroidery on chest pocket

\$109.95 AUD, \$132.95 NZD



Patrick Check 2-Pocket Long Sleeve Shirt T6W1115035, Kingsley Belt (Mocha) TCP1963BEL, Stretch Moleskin Jean Mid-Reg-Straight 34" Leg (Sand) TCP1241007



Adam Check 2-Pocket Long Sleeve Shirt T6W1115034, Kingsley Belt (Mocha) TCP1963BEL, Brad Thermal Comfort Waist Jean 32" Leg T6W1226102



BLUE/MULTI

**Men's Jonathan Check 2-Pocket Long Sleeve Shirt**

T6W1115039

S, M, L, XL, XXL, 3XL, 4XL  
100% Cotton  
Yarn Dyed Check

2-Pocket long sleeve shirt, one with pen holder, long shirt tail, back pleat for comfort and movement, concealed collar peak buttons, removable collar stays, horseman embroidery on chest pocket

\$109.95 AUD, \$132.95 NZD



NAVY/GREEN

**Men's Stephen Check 2-Pocket Long Sleeve Shirt**

T6W1115038

S, M, L, XL, XXL, 3XL, 4XL  
100% Cotton  
Yarn Dyed Check

2-Pocket long sleeve shirt, one with pen holder, long shirt tail, back pleat for comfort and movement, concealed collar peak buttons, removable collar stays, horseman embroidery on chest pocket

\$109.95 AUD, \$132.95 NZD



BLUE/TAN

**Men's Patrick Check 2-Pocket Long Sleeve Shirt**

T6W1115035

S, M, L, XL, XXL, 3XL, 4XL  
100% Cotton  
Yarn Dyed Check

2-Pocket long sleeve shirt, one with pen holder, long shirt tail, back pleat for comfort and movement, concealed collar peak buttons, removable collar stays, horseman embroidery on chest pocket

\$109.95 AUD, \$132.95 NZD



NAVY/TAN

**Men's Adam Check 2-Pocket Long Sleeve Shirt**

T6W1115034

S, M, L, XL, XXL, 3XL, 4XL  
100% Cotton  
Yarn Dyed Check

2-Pocket long sleeve shirt, one with pen holder, long shirt tail, back pleat for comfort and movement, concealed collar peak buttons, removable collar stays, horseman embroidery on chest pocket

\$109.95 AUD, \$132.95 NZD



Justin Check 2-Pocket Long Sleeve Shirt  
T6W1115033, Heritage Belt TCP1959BEL, Brad  
Thermal Comfort Waist Jean 32" Leg T6W1226102

**Men's Justin Check 2-Pocket Long Sleeve Shirt**

T6W1115033

S, M, L, XL, XXL, 3XL, 4XL  
100% Cotton Yarn Dyed Check

2-Pocket long sleeve shirt, one with pen holder, long shirt tail, back pleat for comfort and movement, concealed collar peak buttons, removable collar stays, horseman embroidery on chest pocket



NAVY/GREEN

\$109.95 AUD, \$132.95 NZD

Fitzroy Wool Felt Hat (Bone) TCP1907HAT, Sean  
Check 2-Pocket Long Sleeve Shirt T6W1115032,  
Donovan Belt TCP1928BEL, Brad Thermal Comfort  
Waist Jean 32" Leg T6W1226102, Trentham Cushion  
Tec EEE Fit (Chestnut) TCP18193



BLUE/RED

**Men's Sean Check 2-Pocket Long Sleeve Shirt**

T6W1115032

S, M, L, XL, XXL, 3XL, 4XL  
100% Cotton  
Yarn Dyed Check

2-Pocket long sleeve shirt, one with pen holder, long shirt tail, back pleat for comfort and movement, concealed collar peak buttons, removable collar stays, horseman embroidery on chest pocket

\$109.95 AUD, \$132.95 NZD



NAVY/GREEN

**Men's Edward Check 2-Pocket Long Sleeve Shirt**

T6W1115031

S, M, L, XL, XXL, 3XL, 4XL  
100% Cotton  
Yarn Dyed Check

2-Pocket long sleeve shirt, one with pen holder, long shirt tail, back pleat for comfort and movement, concealed collar peak buttons, removable collar stays, horseman embroidery on chest pocket

\$109.95 AUD, \$132.95 NZD





NAVY/TAN

**Men's Ronald Thermal Check 2-Pocket Long Sleeve Shirt**

T6W1115028

S, M, L, XL, XXL, 3XL, 4XL

100% Cotton Cord  
Yarn Dyed Check,  
Thermal Brushed

2-Pocket long sleeve shirt, one with pen holder, yarn dyed check in pinwale cord with thermal quality brushing, long shirt tail, back pleat for comfort and movement, concealed collar peak buttons, removable collar stays, horseman embroidery on chest pocket

\$109.95 AUD, \$132.95 NZD



BLACK

**Men's Ben Thermal Check 2-Pocket Long Sleeve Shirt**

T6W1115027

S, M, L, XL, XXL, 3XL, 4XL

100% Cotton Cord  
Yarn Dyed Check,  
Thermal Brushed

2-Pocket long sleeve shirt, one with pen holder, yarn dyed check in pinwale cord with thermal quality brushing, long shirt tail, back pleat for comfort and movement, concealed collar peak buttons, removable collar stays, horseman embroidery on chest pocket

\$109.95 AUD, \$132.95 NZD

Ben Thermal Check 2-Pocket Long Sleeve Shirt T6W1115027, Heritage Belt TCP1959BEL, Brad Thermal Comfort Waist Jean 32" Leg T6W1226102



Keith Thermal 2-Pocket Long Sleeve Shirt T6W1115026, Donovan Belt TCP1928BEL, Brad Thermal Comfort Waist Jean 32" Leg T6W1226102

**Men's Keith Thermal 2-Pocket Long Sleeve Shirt**

T6W1115026

S, M, L, XL, XXL, 3XL, 4XL

100% Cotton,  
Thermal Brushed

GREEN

2-Pocket long sleeve shirt, one with pen holder, textured twill with thermal quality brushing, long shirt tail, back pleat for comfort and movement, concealed collar peak buttons, removable collar stays, horseman embroidery on chest pocket



\$109.95 AUD, \$132.95 NZD

Bronco Hat (Brown) TCP1934002, Vic Reversible 1/4 Zip Neck Jumper (Green/Navy) T6W1531173, Patrick Check 2-Pocket Long Sleeve Shirt T6W1115035, Kingsley Belt (Mocha) TCP1963BEL, Brad Thermal Comfort Waist Jean 32" Leg T6W1226102

RUGBIES



BLACK/OAT MARLE



GREEN/NAVY



**Men's Vic Reversible 1/4 Zip Neck Jumper**

T6W1531173

S, M, L, XL, XXL, 3XL, 4XL

65% Polyester / 35% Viscose Jersey, 220gsm

Lightweight reversible jersey 1/4 zip neck knit, transeasonal for all year round, 1/4 placket with premium quality metal zip closure, horseman print on chest



\$139.95 AUD, \$169.95 NZD



BLACK/OAT



BACK COLLAR EMBROIDERY



MOCK LEATHER HEM LABEL



**Men's Brandon Stripe Rugby**

T6W1503017

S, M, L, XL, XXL, 3XL, 4XL

100% Cotton Rugby Jersey Yarn Dyed Stripe, Peached, 280gsm

Midweight jersey knit rugby, transeasonal for all year round, long sleeves with rib knit cuffs, cotton drill collar with contrast underside, canvas tape placket with concealed buttons, contrast taping on inner neck and side seam splits, mock leather chest badge

\$139.95 AUD, \$169.95 NZD



Bronco Hat (Black) TCP1934002, Brandon Stripe Rugby T6W1503017, Jeremy Tailored Long Sleeve Shirt T6W1121046, Brad Thermal Comfort Waist Jean 32" Leg T6W1226102

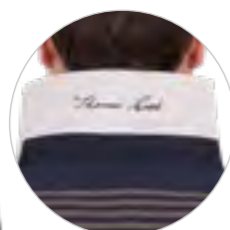




Bryan Stripe Rugby T6W1503024, Gregory Stripe 1-Pocket Long Sleeve Shirt T6W1118043, Brad Thermal Comfort Waist Jean 32" Leg T6W1226102



NAVY/DARK TAN



BACK COLLAR EMBROIDERY



MOCK LEATHER HEM LABEL

**Men's Bryan Stripe Rugby**

T6W1503024

S, M, L, XL, XXL, 3XL, 4XL  
100% Cotton Rugby Jersey Yarn Dyed Stripe, Peached, 330gsm

Heavyweight jersey knit rugby, long sleeves with rib knit cuffs, cotton drill collar with contrast underside, canvas tape placket with concealed buttons, contrast taping on inner neck and side seam splits, horseman embroidery on chest

\$139.95 AUD, \$169.95 NZD



NAVY/TAN



BACK COLLAR EMBROIDERY



MOCK LEATHER HEM LABEL

**Men's Jose Stripe Rugby**

T6W1503022

S, M, L, XL, XXL, 3XL, 4XL  
100% Cotton Rugby Jersey Yarn Dyed Stripe, Peached, 330gsm

Heavyweight jersey knit rugby, long sleeves with rib knit cuffs, cotton drill collar with contrast underside, canvas tape placket with concealed buttons, contrast taping on inner neck and side seam splits, horseman embroidery on chest

\$139.95 AUD, \$169.95 NZD



Gary Stripe Rugby T6W1503023, Justin Check 2-Pocket Long Sleeve Shirt T6W1115033, Brad Thermal Comfort Waist Jean 32" Leg T6W1226102

**Men's Gary Stripe Rugby**

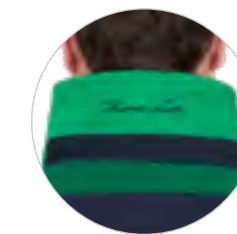
T6W1503023

S, M, L, XL, XXL, 3XL, 4XL  
100% Cotton Rugby Jersey Yarn Dyed Stripe, Peached, 330gsm

BLUE/GREEN

Heavyweight jersey knit rugby, long sleeves with rib knit cuffs, cotton drill collar with contrast underside, canvas tape placket with concealed buttons, contrast taping on inner neck and side seam splits, horseman embroidery on chest

\$139.95 AUD, \$169.95 NZD



BACK COLLAR EMBROIDERY



MOCK LEATHER HEM LABEL



NAVY/GREY MARLE

**Men's Nathan**  
**1/4 Zip Stripe Rugby**

T6W1524020

S, M, L, XL, XXL, 3XL, 4XL  
100% Cotton Rugby  
Jersey Yarn Dyed Stripe,  
Peached, 330gsm

Heavyweight jersey knit rugby,  
1/4 placket with premium quality  
metal zip closure, long sleeves with  
rib knit cuffs, rib knit collar facing,  
contrast taping on inner neck  
and side seam splits, horseman  
embroidery on chest

\$139.95 AUD, \$169.95 NZD



NAVY/MULTI

**Men's Nicholas**  
**1/4 Zip Stripe Rugby**

T6W1524018

S, M, L, XL, XXL, 3XL, 4XL  
100% Cotton Rugby  
Jersey Yarn Dyed Stripe,  
Peached, 330gsm

Heavyweight jersey knit rugby,  
1/4 placket with premium quality  
metal zip closure, long sleeves with  
rib knit cuffs, rib knit collar facing,  
contrast taping on inner neck  
and side seam splits, horseman  
embroidery on chest

\$139.95 AUD, \$169.95 NZD



NAVY/SAGE

**Men's Douglas**  
**Stripe Rugby**

T6W1503019

S, M, L, XL, XXL, 3XL, 4XL  
100% Cotton Rugby  
Jersey Yarn Dyed Stripe,  
Peached, 330gsm

Heavyweight jersey knit rugby, long  
sleeves with rib knit cuffs, cotton  
drill collar with contrast underside,  
canvas tape placket with concealed  
buttons, contrast taping on inner  
neck and side seam splits, horseman  
embroidery on chest

\$139.95 AUD, \$169.95 NZD



NAVY/DARK TAN

**Men's Travis**  
**Stripe Rugby**

T6W1503015

S, M, L, XL, XXL, 3XL, 4XL  
100% Cotton Rugby  
Jersey Yarn Dyed Stripe,  
Peached, 330gsm

Heavyweight jersey knit rugby,  
long sleeves with rib knit cuffs and  
contrast stripe tipping, cotton drill  
collar with contrast underside,  
canvas tape placket with concealed  
buttons, contrast taping on inner  
neck and side seam splits, mock  
leather chest badge

\$139.95 AUD, \$169.95 NZD

Ray Merino Blend 1/4 Zip Knit Jumper  
T6W1530007, Patrick Check 2-Pocket  
Long Sleeve Shirt T6W1115035, Croc Twin  
Keeper Belt (Chocolate) TCP1962BEL,  
Stretch Moleskin Jean Mid-Reg-Straight  
34" Leg (Sand) TCP1241007



Fitzroy Wool Felt Hat (Bone) TCP1907HAT, Jerry Stripe Merino Blend 1/4 Zip Knit Jumper T6W1523004, Sean Check 2-Pocket Long Sleeve Shirt T6W1115032, Brad Thermal Comfort Waist Jean 32" Leg T6W1226102



TAN MARLE

**Men's Blair Merino Blend Crew Neck Knit Jumper**

T6W1508176

S, M, L, XL, XXL, 3XL, 4XL  
50% Australian Merino Wool / 50% Acrylic Knit, 12 Gauge

Lightweight crew neck knit, Australian merino wool blend, transeasonal for all year round, rib detail at neck, sleeve cuff and hem to keep shape, contrast chambray back neck facing, horseman embroidery on chest

\$119.95 AUD, \$144.95 NZD



PETROL

**Men's Shane Merino Blend V-Neck Knit Jumper**

T6W1532008

S, M, L, XL, XXL, 3XL, 4XL  
50% Australian Merino Wool / 50% Acrylic Knit, 12 Gauge

Lightweight v-neck knit, Australian merino wool blend, transeasonal for all year round, rib detail at neck, sleeve cuff and hem to keep shape, contrast chambray back neck facing, horseman embroidery on chest

\$119.95 AUD, \$146.95 NZD



OLIVE MARLE

**Men's Ray Merino Blend 1/4 Zip Knit Jumper**

T6W1530007

S, M, L, XL, XXL, 3XL, 4XL  
50% Australian Merino Wool / 50% Acrylic Knit, 12 Gauge

Lightweight 1/4 zip neck knit, Australian merino wool blend, transeasonal for all year round, rib collar, sleeve cuff and hem to keep shape, 1/4 placket with premium quality metal zip closure, horseman embroidery on chest

\$129.95 AUD, \$155.95 NZD



NAVY/PETROL

**Men's Jerry Stripe Merino Blend 1/4 Zip Knit Jumper**

T6W1523004

S, M, L, XL, XXL, 3XL, 4XL  
50% Australian Merino Wool / 50% Acrylic Knit, 12 Gauge

Midweight wool blend rugby knit, Australian merino wool blend, engineered stripe, mock suede detail on collar, front opening and shoulder panels, rib collar, sleeve cuff and hem to keep shape, 1/4 placket with premium quality metal zip closure, horseman embroidery on chest

\$199.95 AUD, \$240.95 NZD



NAVY/GREEN MARLE

**Men's Troy Stripe Merino Blend 1/4 Zip Knit Jumper**

T6W1523003

S, M, L, XL, XXL, 3XL, 4XL  
50% Australian Merino Wool / 50% Acrylic Knit, 12 Gauge

Midweight wool blend rugby knit, Australian merino wool blend, engineered stripe, mock suede detail on collar, front opening, and shoulder panels, rib collar, sleeve cuff and hem to keep shape, 1/4 placket with premium quality metal zip closure, horseman embroidery on chest

\$199.95 AUD, \$240.95 NZD



Troy Stripe Merino Blend 1/4 Zip Knit Jumper T6W1523003, Patrick Check 2-Pocket Long Sleeve Shirt T6W1115035



CHARCOAL MARLE

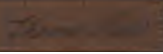
**Men's Terry Fisherman Crew Neck Knit Jumper**

T6W1508002

S, M, L, XL, XXL, 3XL, 4XL  
100% Australian Merino Wool Chunky Jersey Knit, 5 Gauge

\$219.95 AUD, \$264.95 NZD

Heavyweight crew neck chunky rib knit, 100% Australian merino wool, rib detail at neck, sleeve cuff and hem to keep shape



HEM MOCK LEATHER BADGE

Samuel Driver Cap (Blue) T6W1919CAP, Jesse Merino 1/4 Zip Jumper (Chestnut) T6W1519001, Brad Thermal Comfort Waist Jean 32" Leg T6W1226102



Oberon Light Weight Down Vest T6W1609174, Keith Thermal 2-Pocket Long Sleeve Shirt T6W1115026



VESTS & JACKETS



BLUE MARLE

**Men's Jesse Merino 1/4 Zip Knit Jumper**

T6W1519001

S, M, L, XL, XXL, 3XL, 4XL  
100% Australian Merino Wool Chunky Jersey Knit, 5 Gauge



CHESTNUT

Heavyweight chunky rib knit, 100% Australian merino wool, contrast inner collar, rib side panels, neck, sleeve, cuff and hem to keep shape, 1/4 placket with premium quality metal zip closure

\$229.95 AUD, \$277.95 NZD



HEM MOCK LEATHER BADGE



Winton Beanie T6W1969BNE,  
Adrian Polar Fleece Jacket  
TCP1720009, Brad Thermal  
Comfort Waist Jean 32" Leg  
T6W1226102



NAVY

**Men's Adrian Polar Fleece Vest**

TCP1615009

S, M, L, XL, XXL, 3XL, 4XL  
100% Polyester  
Polar Fleece, 425gsm

**NEW TO STOCKLINES**

Heavyweight fleece vest, contrast binding detail on collar, front opening, armholes and pockets, front welt pockets with zip closure, hem with internal adjustable toggles to keep in warmth, horseman embroidery on chest

\$99.95 AUD, \$121.95 NZD



NAVY

**Men's Adrian Polar Fleece Jacket**

TCP1720009

S, M, L, XL, XXL, 3XL, 4XL  
100% Polyester  
Polar Fleece, 425gsm

**NEW TO STOCKLINES**

Heavyweight fleece jacket, contrast binding detail on collar, front opening, sleeve opening and pockets, front welt pockets with zip closure, hem with internal adjustable toggles to keep in warmth, horseman embroidery on chest

\$119.95 AUD, \$146.95 NZD

(Left and right) Toby Reversible Vest T6W1608170, Patrick Check 2-Pocket Long Sleeve Shirt T6W1115035, Brad Thermal Comfort Waist Jean 32" Leg T6W1226102



**Men's Toby Reversible Vest**

T6W1608170

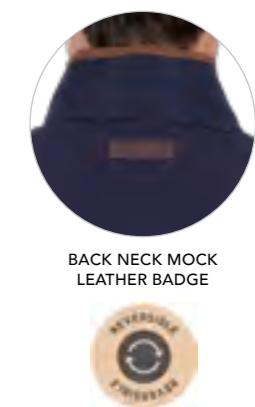
S, M, L, XL, XXL, 3XL, 4XL  
Shell: 95% Polyamide / 5% Elastane  
Lining: 100% Polyester

NAVY/TAN



Midweight 2 tone reversible puffer vest, stylized quilted top stitching, contrast mock leather piping detail on pockets, yokes and front opening, front welt pockets with zip, dipped back hem, premium quality zip closures, horseman embroidery on chest

\$179.95 AUD, \$217.95 NZD



BACK NECK MOCK LEATHER BADGE



Matt Vest T6W1607171, Andrew Check 1-Pocket Long Sleeve Shirt T6W1118044, Croc Twin Keeper Belt (Chocolate) TCP1962BEL, Stretch Moleskin Jean Mid-Reg-Straight 34" Leg (Sand) TCP1241007



**Men's Matt Vest**

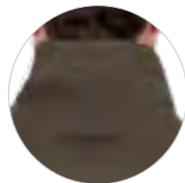
T6W1607171

S, M, L, XL, XXL, 3XL, 4XL

Shell: 56% Polyester / 31% Cotton / 13% Polyamide, Peached

Lining: 100% Polyester

Midweight puffer vest, stylized quilted top stitching, cord detail on collar stand and shoulder panels, cord front welt pockets with snap closure, lined for warmth, storm flap with easy snap® construction for easy closure, contrast quilted lining, dipped back hem, internal chest pocket, premium quality zip closures, horseman embroidery on chest



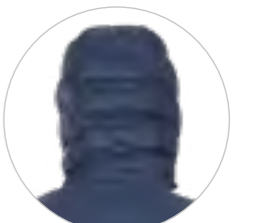
BACK NECK MOCK LEATHER BADGE

KHAKI

\$179.95 AUD, \$217.95 NZD



COMPACT DESIGN - PACKS INTO POCKET



DETACHABLE HOOD



**Men's Oberon Light Weight Down Vest**

T6W1609174

S, M, L, XL, XXL, 3XL, 4XL

Shell: 100% Nylon

Fill: 90% Down / 10% Feather

NAVY

Experience the weightlessness and compressibility that comes with the Thomas Cook down products, 90% down and 10% feather ultra light filling provides superior warmth, water repellent finish, compressible to be folded into internal pocket for easy packing and travelling, seamless quilting detail, detachable hood, elasticated hem and armhole openings seals out the cold, panelling detail with in-seam pockets and zips, front pockets with contrast corded piping, lined for warmth, internal pockets, horseman print on chest, winter necessity

Oberon Light Weight Down Vest T6W1609174, Keith Thermal 2-Pocket Long Sleeve Shirt T6W1115026, Brad Thermal Comfort Waist Jean 32" Leg T6W1226102

\$179.95 AUD, \$217.95 NZD

PRICES ARE RRP



BACK NECK MOCK  
LEATHER BADGE

**Men's Marcus Faux Oilskin Vest**

T6W1607173

S, M, L, XL, XXL, 3XL, 4XL

Shell: 65% Cotton / 35% Polyester, Faux Oilskin

Lining: 100% Polyester

RUSTIC MULCH

Heavyweight vest in faux oilskin fabric, stylized quilted top stitching on yoke, sherpa lined body with part satin quilting for comfort and warmth, cord detail on inner collar and front opening facing, piping detail on pockets and yokes, front patch pockets with top and side entry, lined for warmth, dipped back hem, storm flap with easy snap® construction for easy closure, detailed TC internal trims for quality finish, adjustable waist tab, internal chest pocket, premium quality zip closures, rust proof metal accessories, horseman embroidery on chest

\$239.95 AUD, \$291.95 NZD



BACK NECK MOCK  
LEATHER BADGE

**Men's Lucas Jacket**

T6W1717175

S, M, L, XL, XXL, 3XL, 4XL

Shell: 100% Cotton Canvas Peached

Lining: 70% Polyester / 30% Cotton

TOBACCO

Lightweight jacket, transeasonal for all year round, mock leather piping detail on pockets and front yokes, front welt pockets with snap closure, lined for warmth, storm flap with easy snap® construction for easy closure, waistband with adjustable tabs, adjustable sleeve cuff tabs in mock leather, lightweight lining, internal chest pockets, premium quality zip closures, rust proof metal accessories, horseman embroidery on chest

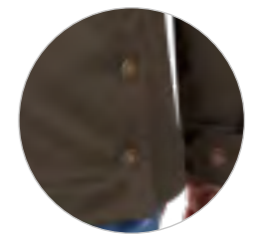
\$199.95 AUD, \$240.95 NZD



Bronco Hat (Fawn) TCP1934002,  
Lucas Jacket T6W1717175, Ben Thermal  
Check 2-Pocket Long Sleeve Shirt  
T6W1115027, Brad Thermal Comfort  
Waist Jean 32" Leg T6W1226102



(Left and right) Fitzroy Wool Felt Hat (Bone) TCP1907HAT, Toby Reversible Jacket T6W1708170, Jerry Stripe Merino Blend 1/4 Zip Knit Jumper T6W1523004, Sean Check 2-Pocket Long Sleeve Shirt T6W1115032, Brad Thermal Comfort Waist Jean 32" Leg T6W1226102



DOUBLE BACK VENTS



BACK NECK MOCK LEATHER BADGE

**Men's Matt Jacket**

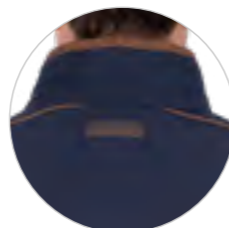
T6W1707171

S, M, L, XL, XXL, 3XL, 4XL  
Shell: 56% Polyester / 31% Cotton / 13% Polyamide, Peached  
Lining: 100% Polyester

KHAKI

Midweight puffer jacket, double back vents for easy movement, cord detail on collar stand, inner collar and front opening facing, cord front welt pockets with snap closure, lined for warmth, storm flap with easy snap® construction for easy closure, adjustable sleeve cuff tabs, contrast quilted lining, internal chest pocket, premium quality zip closures, horseman embroidery on chest

\$219.95 AUD, \$264.95 NZD



BACK NECK MOCK LEATHER BADGE



**Men's Toby Reversible Jacket**

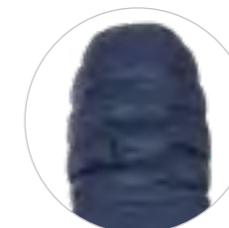
T6W1708170

S, M, L, XL, XXL, 3XL, 4XL  
Shell: 95% Polyamide / 5% Elastane  
Lining: 100% Polyester

NAVY/TAN

Midweight 2 tone reversible puffer jacket, stylized quilted top stitching, contrast mock leather piping detail on pockets, yokes and front opening, front welt pockets with zip, dipped back hem, rib sleeve cuff to keep in warmth, premium quality zip closures, horseman embroidery on chest

\$239.95 AUD, \$291.95 NZD



DETACHABLE HOOD



COMPACT DESIGN - PACKS INTO POCKET



**Men's Oberon Light Weight Down Jacket**

T6W1709174

S, M, L, XL, XXL, 3XL, 4XL  
Shell: 100% Nylon  
Fill: 90% Down / 10% Feather

NAVY

Experience the weightlessness and compressibility that comes with the Thomas Cook down products, 90% down and 10% feather ultra light filling provides superior warmth, water repellent finish, compressible to be folded into internal pocket for easy packing and travelling, seamless quilting detail, detachable hood, elasticated hem and sleeve openings seals out the cold, panelling detail with in-seam pockets and zips, front pockets with contrast corded piping, lined for warmth, internal pockets, horseman print on chest, winter necessity

\$239.95 AUD, \$291.95 NZD



Marcus Faux Oilskin Jacket  
T6W1707173, Brad Thermal  
Comfort Waist Jean 32" Leg  
T6W1226102



BACK NECK MOCK  
LEATHER BADGE

**Men's Marcus Faux Oilskin Jacket**

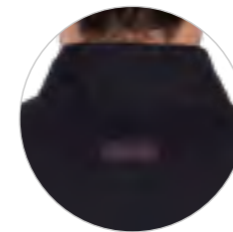
T6W1707173

S, M, L, XL, XXL, 3XL, 4XL  
Shell: 65% Cotton / 35% Polyester,  
Faux Oilskin  
Lining: 100% Polyester

RUSTIC MULCH

Heavyweight jacket in faux oilskin fabric, stylized quilted top stitching on yoke, sherpa lined body with part satin quilting for comfort and warmth, cord detail on inner collar and front opening facing, piping detail on pockets and yokes, front patch pockets with top and side entry, lined for warmth, storm flap with easy snap® construction for easy closure, adjustable sleeve cuff tabs, detailed TC internal trims for quality finish, internal chest pocket, premium quality zip closures, rust proof metal accessories, horseman embroidery on chest

\$299.95 AUD, \$362.95 NZD



BACK NECK MOCK  
LEATHER BADGE



**Men's Louis Light Weight Oilskin Jacket**

T6W1707175

S, M, L, XL, XXL, 3XL, 4XL  
Shell: 100% Waxed Cotton Oilskin  
Lining: 100% Cotton

BLACK

Lightweight jacket in oilskin fabric, cord detail on inner collar and front opening facing, chest welt pocket with zip closure, storm flap with easy snap® construction for easy closure, adjustable sleeve cuff tabs, front welt pockets with snap closure, lined for warmth, cotton lined body with detailed TC internal contrast tape for quality finish, internal chest pocket, premium quality zip closures, rust proof metal accessories

\$219.95 AUD, \$264.95 NZD



Bronco Hat (Black) TCP1934002,  
Louis Light Weight Oilskin Jacket  
T6W1707175, Brandon Stripe  
Rugby T6W1503017, Jeremy  
Tailored Long Sleeve Shirt  
T6W1121046, Brad Thermal  
Comfort Waist Jean 32" Leg  
T6W1226102



Gregory Stripe 1-Pocket Long Sleeve Shirt T6W1118043, Kingsley Belt (Black) T6W1963BEL, Brad Thermal Comfort Waist Jean 32" Leg T6W1226102, Trentham Cushion Tec EEE Fit (Chestnut) TCP18193



**Men's Brad Thermal Comfort Waist Jean 32" Leg**  
T6W1226102

30, 32, 34, 36, 38, 40, 42, 44  
70% Cotton / 28% Polyester / 2% Elastane, 13oz

LIGHT WASH

5 Pocket jean in 32" leg, underside of fabric with brushing for warm thermal qualities, breathable, tailored leg fit - slimmer through seat & leg, double stitched for strength, deep front pockets, twin back belt loops, rust proof metal accessories, back waistband with mock leather label, horseman embroidery on front coin pocket, stretch for comfort and movement

\$119.95 AUD, \$146.95 NZD

Thomas Crew TCP1512013, Charles Check Tailored Long Sleeve Shirt T6W1121049, Brad Thermal Comfort Waist Jean 32" Leg T6W1226102, Trentham Cushion Tee EEE Fit (Chestnut) TCP18193



BACK NECK LOGO EMBROIDERY



CHEST EMBROIDERY



**Men's Thomas Crew**

TCP1512013

S, M, L, XL, XXL, 3XL, 4XL

80% Cotton / 20% Polyester Brushed Fleece, 345gsm

NAVY

Heavyweight brushed fleece crew, rib knit cuff, hem band and side panels

**NEW TO STOCKLINES**

\$99.95 AUD, \$121.95 NZD



BACK NECK LOGO PRINT



SMALL CHEST PRINT



**Men's Heritage Cob and Co Pullover Hoodie**

T6W1533011

S, M, L, XL, XXL, 3XL, 4XL

80% Cotton / 20% Polyester Brushed Fleece, 345gsm

GREEN

Heavyweight brushed fleece pullover, hood with drawcord closure and metal trims, front welt pockets, rib trim pockets, hem, cuffs and hood opening

\$109.95 AUD, \$133.95 NZD





Heritage Cob and Co Pullover Hoodie  
T6W1533011, Brad Thermal Comfort  
Waist Jean 32" Leg T6W1226102



Heritage Oval Pullover Hoodie  
T6W1533010, Brad Thermal Comfort  
Waist Jean 32" Leg T6W1226102



BACK NECK  
LOGO PRINT



SMALL CHEST PRINT

**Men's Heritage Oval Pullover Hoodie**

T6W1533010

S, M, L, XL, XXL, 3XL, 4XL

80% Cotton / 20% Polyester Brushed Fleece,  
345gsm

NAVY

Heavyweight brushed fleece pullover, hood with  
drawcord closure and metal trims, front welt pockets,  
rib trim pockets, hem, cuffs and hood opening

\$109.95 AUD, \$133.95 NZD

# GIRLSWEAR



This Page: Bonnie Jacket T6W5704142, Heather Boot Cut Jean T6W5200143

Opposite Page: Tamara Long Sleeve Shirt T6W5110145, Kid's Silver Twin Keeper Belt (Chocolate) TCP7920BEL, Heather Boot Cut Jean T6W5200143

AW26



 *Thomas Look*<sup>®</sup>

AUTUMN/WINTER 2026



Nora Long Sleeve Shirt  
T6W5108108, Kid's Silver  
Twin Keeper Belt (Chocolate)  
TCP7920BEL, Heather Boot  
Cut Jean T6W5200143



PINK/WHITE

**Girl's Tamara  
Long Sleeve Shirt**

T6W5110145

4, 6, 8, 10, 12, 14  
100% Cotton  
Yarn Dyed Check

\$69.95 AUD, \$91.95 NZD

Cotton yarn dyed check textured fabric, contrast gingham trims, grosgrain taping on inside neck, under placket, and sleeve cuffs, Thomas Cook embroidery on back collar stand, horseman embroidery on chest



BLUE/WHITE

**Girl's Nora Long  
Sleeve Shirt**

T6W5108108

4, 6, 8, 10, 12, 14  
100% Cotton  
Yarn Dyed Check

\$79.95 AUD, \$107.95 NZD

Cotton yarn dyed check textured fabric, ruffle detail on front placket and armholes, contrast spot trims, grosgrain taping on inside neck and sleeve cuffs, horseman embroidery on side hem



Kid's Original Crushable  
Hat (Pink) TCP7970HAT,  
Celine Long Sleeve Shirt  
T6W5108085, Kid's Silver  
Twin Keeper Belt (Chocolate)  
TCP7920BEL, Heather Boot  
Cut Jean T6W5200143

**Girl's Celine  
Long Sleeve Shirt**

T6W5108085

4, 6, 8, 10, 12, 14  
60% Cotton / 39% Polyester /  
1% Metallic Yarn Dyed Stripe

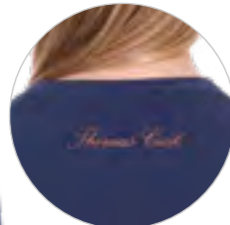
NAVY/WHITE

Cotton blend yarn dyed stripe with metallic yarn feature, ruffle detail on front placket and armholes, contrast spot trims, grosgrain taping on inside neck and sleeve cuffs, Thomas Cook embroidery on back collar, horseman embroidery on side hem

\$79.95 AUD, \$107.95 NZD



CONTRAST SLEEVE  
CUFF



BACK NECK METALLIC LOGO PRINT

NAVY MARLE

**Girl's Sasha Long Sleeve Tee**

T6W5501133

4, 6, 8, 10, 12, 14  
95% Cotton / 5% Elastane Jersey, 200gsm

Large front feature print with glitter, stretch for comfort and movement, contrast taping on inside neck

\$39.95 AUD, \$52.95 NZD

Sasha Long Sleeve Tee  
T6W5501133, Heather Boot  
Cut Jean T6W5200143



Amy Long Sleeve Tee  
T6W5501137, Heather Boot  
Cut Jean T6W5200143



**Girl's Amy Long Sleeve Tee**

T6W5501137

4, 6, 8, 10, 12, 14  
95% Cotton / 5% Elastane Jersey, 200gsm

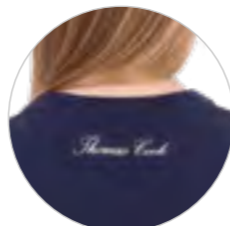
BLUE

Large front feature embroidery with sequins, stretch for comfort and movement, ruffle detail at armhole, contrast taping on inside neck, metallic back neck logo print

\$39.95 AUD, \$52.95 NZD



Kelly Long Sleeve Tee  
T6W5501134,  
Heather Boot Cut Jean  
T6W5200143



BACK NECK METALLIC LOGO PRINT

NAVY

**Girl's Kelly Long Sleeve Tee**

T6W5501134

4, 6, 8, 10, 12, 14  
95% Cotton / 5% Elastane Jersey, 200gsm

Large front feature print with glitter print, stretch for comfort and movement, contrast taping on inside neck

\$39.95 AUD, \$52.95 NZD



Kid's Original Crushable Hat (Pink) TCP7970HAT, Mia Crew T6W5532135, Heather Boot Cut Jean T6W5200143



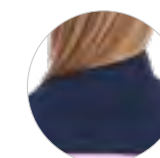
Kid's Original Crushable Hat (Fawn) TCP7970HAT, Sally Crew T6W5532136, Heather Boot Cut Jean T6W5200143



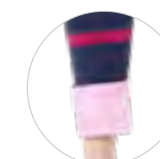
Kid's Original Crushable Hat (Pink) TCP7970HAT, Gemma 1/4 Zip Stripe Rugby T6W5527075, Heather Boot Cut Jean T6W5200143



BACK YOKE LIVE TO RIDE EMBROIDERY (SIZES 4 - 8 ONLY)



BACK YOKE (SIZES 10 - 14)



CONTRAST SLEEVE CUFF

PINK/NAVY

**Girl's Gemma 1/4 Zip Stripe Rugby**

T6W5527075

4, 6, 8, 10, 12, 14

98% Cotton / 2% Elastane  
French Terry Yarn Dyed Stripe, 330gsm

Heavyweight french terry stretch knit rugby, stretch for comfort and movement, 1/4 placket with premium quality metal zip closure, contrast spot trims, contrast taping on inside neck and side seam splits, front welt pockets, horseman embroidery on chest

\$89.95 AUD, \$121.95 NZD



NAVY

**Girl's Mia Crew**

T6W5532135

4, 6, 8, 10, 12, 14

95% Cotton / 5% Elastane  
Brushed Fleece, 270gsm

Midweight brushed fleece crew, stretch for comfort and movement, large front feature embroidery with sequins, contrast spot trims, bow detail on hem band

\$59.95 AUD, \$79.95 NZD



CHEST EMBROIDERY



PINK

**Girl's Sally Crew**

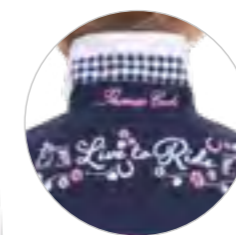
T6W5532136

4, 6, 8, 10, 12, 14

65% Polyester / 35% Cotton  
Brushed Fleece, 320gsm

Heavyweight soft brushed fleece crew, large feature chest embroidery, contrast gingham trims, contrast taping on inside neck, rib cuff and hem, frill detail on rib hem, horseman embroidery on side hem

\$54.95 AUD, \$73.95 NZD



BACK YOKE LIVE TO RIDE EMBROIDERY (SIZES 4 - 8 ONLY)



BACK YOKE (SIZES 10 - 14 ONLY)

MULTI

**Girl's Vivian Stripe Rugby**

T6W5502072

4, 6, 8, 10, 12, 14

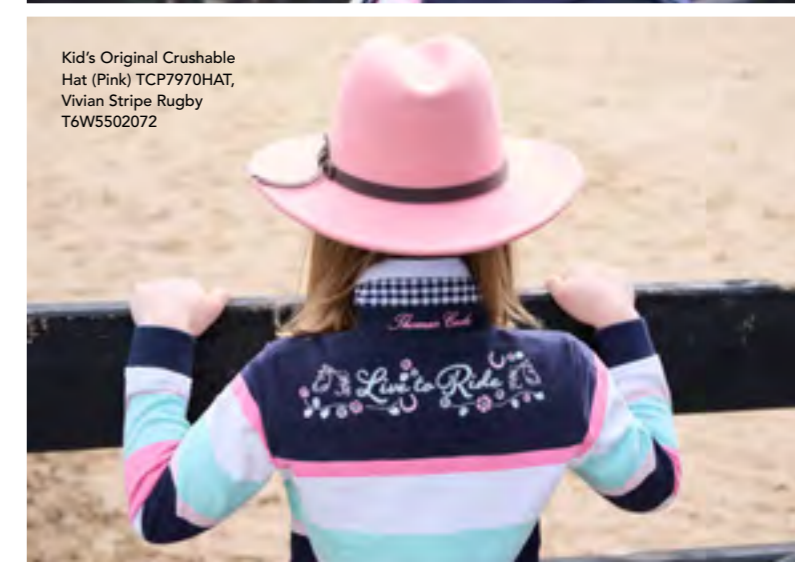
100% Cotton Rugby Jersey Yarn Dyed Stripe, Peached, 330gsm

Heavyweight jersey knit rugby, long sleeves with rib cuffs, cotton drill collar with contrast underside detail and embroidery, contrast gingham trims, contrast inside placket with concealed buttons, contrast taping on inside neck, Thomas Cook embroidery on back collar stand, horseman embroidery on chest

\$79.95 AUD, \$107.95 NZD



Kid's Original Crushable Hat (Pink) TCP7970HAT, Vivian Stripe Rugby T6W5502072



Bonnie Jacket T6W5704142,  
Heather Boot Cut Jean  
T6W5200143



**Girl's Bonnie Jacket**

T6W5704142

4, 6, 8, 10, 12, 14  
100% Polyester Print

PINK

Water repellent fabric, Thomas Cook original hand drawn print, soft microfleece lining for extra comfort and warmth, front pockets, rib sleeve cuffs to keep in warmth, TC embroidery on side hem

\$149.95 AUD, \$201.95 NZD



BACK NECK EMBROIDERY



DETACHABLE HOOD



**Girl's Heather Boot Cut Jean**

T6W5200143

4, 6, 8, 10, 12, 14  
68% Cotton / 30% Polyester / 2% Elastane, 11.5oz

LIGHT WASH



Boot cut, mid rise, stretch for comfort and movement, adjustable elastic waistband, twin back belt loops, feature embroidery on back pockets, horseman embroidery on front pocket

\$74.95 AUD, \$99.95 NZD

**Girl's Chloe Long Sleeve Pyjamas**

T6W5924143

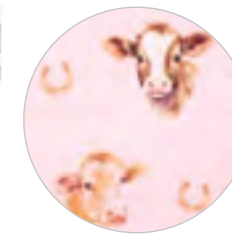
4, 6, 8, 10, 12, 14  
100% Cotton Printed, Thermal Brushed

PINK

**TOP:** Thomas Cook original hand drawn print, soft brushed cotton, collar & button down front with contrast piping detail, front chest pocket with contrast piping detail, long sleeve with contrast piping detail at cuff seam

**BOTTOM:** Thomas Cook original hand drawn print, soft brushed cotton, elasticated waistband, contrast piping detail at hem

\$54.95 AUD, \$73.95 NZD



Celine Long Sleeve Shirt T6W5108085,  
Kid's Silver Twin Keeper Belt  
(Chocolate) TCP7920BEL, Heather  
Boot Cut Jean T6W5200143

# BOYSWEAR



This Page: Sunset Long Sleeve Tee T6W3501203, Bass Stretch Jean - Regular TCP3202072

Opposite Page: Kid's Original Crushable Hat (Fawn) TCP7970HAT, Adam Check 2-Pocket Long Sleeve Shirt T6W3140034, Kid's Reversible Belt T6W7975BEL, Bass Stretch Jean - Regular TCP3202072

AW26



 *Thomas Look*<sup>®</sup>

AUTUMN/WINTER 2026



Andrew Check 1-Pocket Long Sleeve Shirt T6W3139044, Kid's Reversible Belt T6W7975BEL, Bass Stretch Jean - Regular TCP3202072

**Boy's Andrew Check 1-Pocket Long Sleeve Shirt**

T6W3139044

4, 6, 8, 10, 12, 14  
100% Cotton Yarn Dyed Check

NAVY/BLUE

1-Pocket long sleeve shirt, long shirt tail, back pleat for comfort and movement, contrast inner yoke facing with stripe tape detail, horseman embroidery on chest pocket



\$69.95 AUD, \$93.95 NZD



Kid's Original Crushable Hat (Fawn) TCP7970HAT, Edward Check 2-Pocket Long Sleeve Shirt T6W3140031, Kid's Reversible Belt T6W7975BEL, Bass Stretch Jean - Regular TCP3202072



NAVY/GREEN

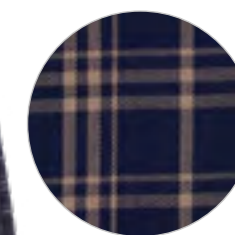
**Boy's Edward Check 2-Pocket Long Sleeve Shirt**

T6W3140031

4, 6, 8, 10, 12, 14  
100% Cotton  
Yarn Dyed Check

2-Pocket long sleeve shirt, long shirt tail, back pleat for comfort and movement, contrast inner yoke facing with stripe tape detail, horseman embroidery on chest pocket

\$69.95 AUD, \$93.95 NZD



NAVY/TAN

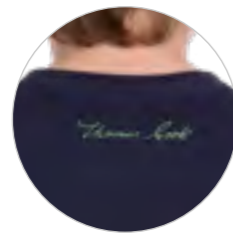
**Boy's Adam Check 2-Pocket Long Sleeve Shirt**

T6W3140034

4, 6, 8, 10, 12, 14  
100% Cotton  
Yarn Dyed Check

2-Pocket long sleeve shirt, long shirt tail, back pleat for comfort and movement, contrast inner yoke facing with stripe tape detail, horseman embroidery on chest pocket

\$69.95 AUD, \$93.95 NZD



BACK NECK LOGO PRINT



NAVY

**Boy's Louis Long Sleeve Tee**

Classic long sleeve tee, large front feature print, rib neck band

T6W3501202

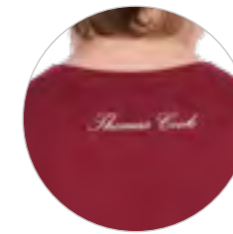
4, 6, 8, 10, 12, 14

100% Cotton Jersey, 200gsm

\$39.95 AUD, \$52.95 NZD



Louis Long Sleeve Tee  
T6W3501202, Bass  
Stretch Jean - Regular  
TCP3202072



BACK NECK LOGO PRINT



RED

**Boy's Sunset Long Sleeve Tee**

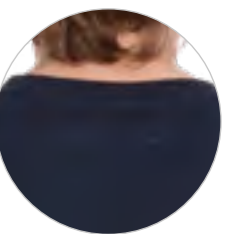
Classic long sleeve tee, small chest feature print, rib neck band

T6W3501203

4, 6, 8, 10, 12, 14

100% Cotton Jersey, 200gsm

\$34.95 AUD, \$45.95 NZD



BACK NECK LOGO EMBROIDERY



CHEST EMBROIDERY



NAVY

**Boy's Thomas Crew**

Heavy weight brushed fleece crew, large feature chest embroidery, rib knit cuff and hem band and side panels

T6W3512013

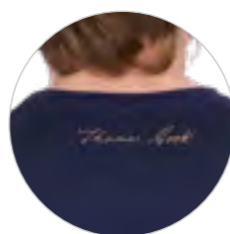
4, 6, 8, 10, 12, 14

80% Cotton / 20% Polyester  
Brushed Fleece, 345gsm

\$54.95 AUD, \$75.95 NZD



Karl Henley Long Sleeve Tee  
T6W3517201, Bass  
Stretch Jean - Regular  
TCP3202072



BACK NECK LOGO PRINT



NAVY/TAN

**Boy's Karl Henley Long Sleeve Tee**

Henley style long sleeve tee, contrast cut'n'sew yokes and sleeves, button closure, large feature print and embroidery, rib neck band

T6W3517201

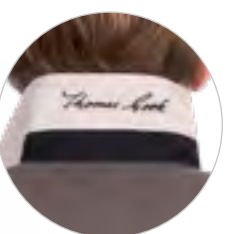
4, 6, 8, 10, 12, 14

100% Cotton Jersey, 200gsm

\$44.95 AUD, \$61.95 NZD



Brandon Stripe Rugby  
T6W3503017, Brad Thermal  
Stretch Jean - Regular  
T6W3202102



BACK COLLAR EMBROIDERY



BLACK/OAT

**Boy's Brandon Stripe Rugby**

Midweight jersey knit rugby, transeasonal for all year round, long sleeves with rib knit cuffs, cotton drill collar with contrast underside, canvas tape placket with concealed buttons, contrast herringbone taping on inner neck and side seam splits, horseman embroidery on chest

T6W3503017

4, 6, 8, 10, 12, 14

100% Cotton Rugby Jersey  
Yarn Dyed Stripe,  
Peached, 280gsm

\$84.95 AUD, \$114.95 NZD



Kid's Original Crushable Hat (Fawn)  
TCP7970HAT, Jose Stripe Rugby  
T6W3503022, Bass Stretch Jean -  
Regular TCP3202072

**Boy's Jose Stripe Rugby**

T6W3503022

4, 6, 8, 10, 12, 14  
100% Cotton Rugby Jersey  
Yarn Dyed Stripe, Peached, 330gsm

NAVY/TAN

Heavyweight jersey knit rugby, long sleeves with rib knit cuffs, cotton drill collar with contrast underside, canvas tape placket with concealed buttons, contrast herringbone taping on inner neck and side seam splits, horseman embroidery on chest



BACK COLLAR EMBROIDERY

\$84.95 AUD, \$114.95 NZD

Douglas Stripe Rugby  
T6W3503019, Brad Thermal  
Stretch Jean - Regular  
T6W3202102



BACK COLLAR EMBROIDERY

NAVY/SAGE

**Boy's Douglas Stripe Rugby**

T6W3503019

4, 6, 8, 10, 12, 14  
100% Cotton Rugby Jersey  
Yarn Dyed Stripe,  
Peached, 330gsm

Heavyweight jersey knit rugby, long sleeves with rib knit cuffs, cotton drill collar with contrast underside, canvas tape placket with concealed buttons, contrast herringbone taping on inner neck and side seam splits, horseman embroidery on chest

\$84.95 AUD, \$114.95 NZD



BACK COLLAR EMBROIDERY

BLUE/GREEN

**Boy's Gary Stripe Rugby**

T6W3503023

4, 6, 8, 10, 12, 14  
100% Cotton Rugby Jersey  
Yarn Dyed Stripe,  
Peached, 330gsm

Heavyweight jersey knit rugby, long sleeves with rib knit cuffs, cotton drill collar with contrast underside, canvas tape placket with concealed buttons, contrast herringbone taping on inner neck and side seam splits, horseman embroidery on chest

\$84.95 AUD, \$114.95 NZD



Gary Stripe Rugby T6W3503023,  
Brad Thermal Stretch Jean -  
Regular T6W3202102



Marcus Faux Oilskin Jacket  
T6W3707173, Douglas Stripe  
Rugby T6W3503019, Brad  
Thermal Stretch Jean - Regular  
T6W3202102

**Boy's Marcus Faux Oilskin Jacket**

T6W3707173

4, 6, 8, 10, 12, 14

Shell: 65% Cotton / 35% Polyester, Faux Oilskin  
Lining: 100% Polyester

RUSTIC MULCH

Heavyweight jacket in faux oilskin fabric, sherpa lined body for comfort and warmth, cord detail on inner collar and front opening facing, piping detail on pockets and yokes, front welt pockets, lined for warmth, dipped back hem, storm flap with easy snap® construction for easy closure, premium quality zip closures, rust proof metal accessories, horseman embroidery on chest



BACK NECK MOCK LEATHER BADGE



\$159.95 AUD, \$213.95 NZD

Sunset Long Sleeve Tee T6W3501203,  
Kid's Reversible Belt T6W7975BEL,  
Brad Thermal Stretch Jean - Regular  
T6W3202102, Kid's Clubber (Brown)  
TCP78044



**Boy's Brad Thermal Stretch Jean - Regular**

T6W3202102

4, 6, 8, 10, 12, 14

70% Cotton /  
28% Polyester /  
2% Elastane, 13oz



5 Pocket jean, underside of fabric with brushing for warm thermal qualities, breathable, regular fit leg, double stitched for strength, twin back belt loops, rust proof metal accessories, back waistband with mock leather label, horseman embroidery on front coin pocket, stretch for comfort and movement

LIGHT WASH

\$74.95 AUD, \$99.95 NZD



**Boy's Ezra Long Sleeve Pyjamas**

T6W3924133

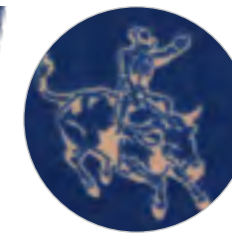
4, 6, 8, 10, 12, 14

100% Cotton Print, Thermal Brushed

NAVY

**TOP:** Thomas Cook original hand drawn print, soft brushed cotton, chest pocket, contrast piping detail on collar, front opening, chest and sleeve cuff, horseman embroidery on chest pocket

**BOTTOM:** Thomas Cook original hand drawn print, soft brushed cotton, elasticated waistband, contrast piping detail at hem



\$49.95 AUD, \$73.95 NZD

# ACCESSORIES



This Page: Madelaine Scarf T6W2948SCF, Luna ¼ Zip Stripe Knit Jumper T6W2563096

Opposite Page: Kid's Emilia Beanie T6W5950BNE, Kelly Long Sleeve Tee T6W5501134

AW26



 *Thomas Look*<sup>®</sup>

AUTUMN/WINTER 2026

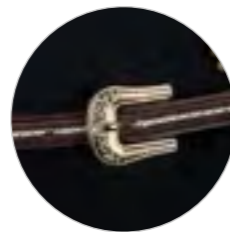
Bronco Hat TCP1934002 (Dark Brown), Chad Check 2-Pocket Long Sleeve Shirt T6W1115041



BLACK



DARK BROWN



DETACHABLE FEATHER

**Bronco Hat**

TCP1934002

53, 54, 55, 56, 57, 58, 59, 60, 61, 62 (cm)

100% Australian Wool Felt

Brim Width: 10cm

Crown Height: 12cm

Hat band with metal buckle, fully lined crown, leather sweatband, showerproof, Thomas Cook metal logo pin



NEW TO STOCKLINES

\$129.95 AUD, \$159.95 NZD



Cooroy Hat T6W1918HAT (Olive), Jonathan Check 2-Pocket Long Sleeve Shirt T6W1115039



OLIVE

BROWN



**Cooroy Hat**

T6W1918HAT

S(55), M(57), L(59), XL(61) (cm)

100% Cotton

Brim Width: 8cm Crown Height: 11cm

Cotton sweatband, eyelets for breathability, adjustable and removable chin strap, showerproof, Thomas Cook metal logo pin

\$69.95 AUD, \$84.95 NZD



DARK TAN



BLUE

**Samuel Driver Cap**

T6W1919CAP

S(55), M(57), L(59), XL(61), XXL(63) (cm)

100% Wool

Tailored fit, wool fabric for warmth, logo emboss on trim, fully lined

\$59.95 AUD, \$61.95 NZD



Samuel Driver Cap T6W1919CAP (Dark Tan), Lewis Scarf T6W1965SCF, Matt Vest T6W1607171, Andrew Check 1-Pocket Long Sleeve Shirt T6W1118044



OATMEAL

**Hannah Beanie**

T6W2944BNE

ONE SIZE

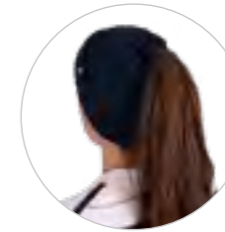
45% Viscose / 29% Polyester / 17% Nylon / 9% Wool

Soft feel fabric, faux fur pom-pom, wool blend for warmth

\$29.95 AUD, \$36.95 NZD



NAVY



**Layla Ponytail Beanie**

T6W2946BNE

ONE SIZE

50% Cotton / 30% Acrylic / 20% Wool

Top opening for ponytail, polar fleece lining, wool blend for warmth



\$29.95 AUD, \$36.95 NZD



NAVY

**Mila Knit Headband**

T6W2947HBD

ONE SIZE

50% Cotton / 30% Acrylic / 20% Wool

Cable knit design, polar fleece lining, wool blend for warmth



\$14.95 AUD, \$17.95 NZD



OATMEAL

**Hannah Scarf**

T6W2945SCF

ONE SIZE - 170cm (L) x 27cm (W)

45% Viscose / 29% Polyester / 17% Nylon / 9% Wool

Soft feel fabric, wool blend for warmth

\$49.95 AUD, \$61.95 NZD



MULTI

**Madelaine Scarf**

T6W2948SCF

ONE SIZE - 190cm (L) x 26cm (W)

64% Polyester / 15% Wool / 12% Acrylic / 5% Nylon / 4% Alpaca

End tassels, wool blend for warmth



\$49.95 AUD, \$61.95 NZD

Hannah Scarf T6W2945SCF, Jacinta Knit Jumper T6W2567088, Julia Thermal Jean 32" Leg T6W2205102



TAN/CHARCOAL

**Lewis Scarf**

T6W1965SCF

ONE SIZE - 180cm (L) x 32cm (W)  
40% Polyester / 20% Wool /  
20% Acrylic / 20% Nylon

Soft feel fabric, wool blend for warmth



\$39.95 AUD, \$45.95 NZD



NAVY/LILAC

**Kid's Emilia Beanie**

T6W5950BNE

ONE SIZE  
70% Acrylic / 30% Wool

Knitted horse pattern, faux fur pom-pom, polar fleece lining, wool blend for warmth



\$24.95 AUD, \$34.95 NZD



CHOCOLATE

**Women's Leather Gloves**

T6W2981GLV

S, M, L  
Genuine Leather  
Lining: 70% Wool / 30% Acrylic

Premium quality soft leather, wool blend lining for warmth



\$49.95 AUD, \$61.95 NZD



Winton Beanie T6W1969BNE, Adrian  
Polar Fleece Jacket T6W1720009



NAVY/TAN

**Winton Beanie**

T6W1969BNE

ONE SIZE  
55% Acrylic / 33% Nylon / 8% Wool / 4% Elastane

Contrast stripe, wool blend for warmth

\$29.95 AUD, \$36.95 NZD



CHOCOLATE

**Men's Leather Gloves**

T6W1975GLV

M, L, XL  
Genuine Leather  
Lining: 70% Wool / 30% Acrylic

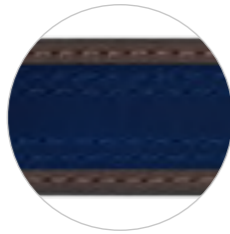
Premium quality soft leather, wool blend lining for warmth



\$49.95 AUD, \$61.95 NZD



NAVY/TAN



**Delaney Belt**

T6W1957BEL

XS(29"), S(32"), M(35"), L(38"), XL(41"),  
XXL(44"), 3XL(47"), 4XL(50")

Genuine Leather

Metal buckle, embossed logo twin keepers, contrast nubuck centre stripe, 30mm (1 1/4") strap width, antique silver hardware

\$59.95 AUD, \$75.95 NZD



CHOCOLATE



EMBOSSED HERITAGE LOGO

**Heritage Belt**

TCP1959BEL

XS(29"), S(32"), M(35"), L(38"), XL(41"),  
XXL(44"), 3XL(47"), 4XL(50")

Genuine Leather

Metal buckle, 38mm (1 1/2") strap width, antique silver hardware

**NEW TO STOCKLINES**

\$59.95 AUD, \$75.95 NZD



TAN/CHOCOLATE



**Croc Twin Keeper Belt**

TCP1962BEL

XS(29"), S(32"), M(35"), L(38"), XL(41"),  
XXL(44"), 3XL(47"), 4XL(50")

Genuine Leather

Metal buckle, embossed logo twin keepers, embossed croc pattern strap, 38mm (1 1/2") strap width, antique silver hardware

**NEW TO STOCKLINES**

\$59.95 AUD, \$75.95 NZD



CHOCOLATE

**Donovan Belt**

TCP1928BEL

XS(29"), S(32"), M(35"), L(38"), XL(41"),  
XXL(44"), 3XL(47"), 4XL(50")

Genuine Leather

Metal buckle, embossed logo twin keepers, 38mm (1 1/2") strap width, antique silver hardware

**NEW TO STOCKLINES**

\$59.95 AUD, \$75.95 NZD



BLACK



DARK TAN



Adam Check 2-Pocket Long Sleeve  
Shirt T6W1115034, Kingsley  
Belt (Mocha) TCP1963BEL, Brad  
Thermal Comfort Waist Jean 32"  
Leg T6W1226102



TAN



CHOCOLATE



NAVY

**Larissa Belt**

TCP2949BEL (Tan & Chocolate)  
T6W2949BEL (Navy)

XS(29"), S(32"), M(35"), L(38"), XL(41"),  
XXL(44"), 3XL(47")

Genuine Leather

Leather covered buckle, embossed  
logo keeper, weave plaited strap,  
45mm strap width

(TAN & CHOCOLATE ONLY)

**NEW TO STOCKLINES**

\$59.95 AUD, \$75.95 NZD



MOCHA



BLACK

**Kingsley Belt**

TCP1963BEL (Mocha)  
T6W1963BEL (Black)

XS(29"), S(32"), M(35"), L(38"), XL(41"),  
XXL(44"), 3XL(47"), 4XL(50")

Genuine Leather

Metal buckle, embossed logo twin keepers, nubuck leather  
strap, 38mm (1 1/2") strap width, antique brass hardware

**NEW TO STOCKLINES (MOCHA ONLY)**

\$59.95 AUD, \$75.95 NZD



CHESTNUT

**Tamara Belt**

T6W2970BEL

XS(29"), S(32"), M(35"), L(38"), XL(41"),  
XXL(44"), 3XL(47")

Genuine Leather

Leather covered buckle, horseman  
emboss on tip, 30mm (1 1/4") strap width

\$54.95 AUD, \$66.95 NZD





CHOCOLATE/BLACK



**Kid's Reversible Belt**

T6W7975BEL

S(22"), M(24"), L(26"), XL(28"), XXL(30")  
Genuine Leather

Metal reversible buckle, metal keeper with embossed logo, 30mm (1 1/4") strap width



\$44.95 AUD, \$61.95 NZD



DARK TAN

**Leather Notebook**

TCP1919NBK

One Size - 16cm (W) x 22.5cm (H)  
Genuine Leather

Leather external cover, embossed logo on front and back, fits A5 notebook or diary, lined A5 notebook is included



**NEW TO STOCKLINES**

\$59.95 AUD, \$79.95 NZD



NAVY/PINK/BLUE

**Women's 3 Pack Riding Socks**

TCP2901SOC

2-7, 8-11  
75% Cotton / 23% Nylon / 2% Elastane

Elastic top, arch and ankle support, thick cushion foot, reinforced toe

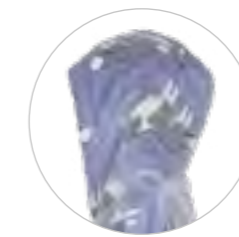


**NEW TO STOCKLINES**

\$29.95 AUD, \$36.95 NZD



BLUE



**Adult's Dog Snuggle Hoodie**

TCP2939SNU

ONE SIZE 100% Polyester

Oversized design, soft plush main fabric, rib sleeve cuffs to keep in warmth, sherpa lining for extra warmth, front pocket and hood, TC embroidery on pocket

**NEW TO STOCKLINES**

\$79.95 AUD, \$98.95 NZD



BLUE



THOMAS COOK SATIN BADGE



**Dog Snuggle Rug**

TCP2912SNU

ONE SIZE - 160cm (L) x 130cm (W)  
100% Polyester

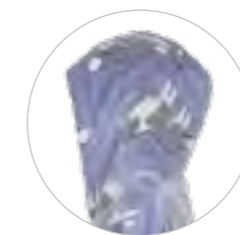
Soft feel fabric for comfort and warmth

**NEW TO STOCKLINES**

\$49.95 AUD, \$66.95 NZD



Kid's Dog Snuggle Hoodie TCP7939SNU



BLUE



**Kid's Dog Snuggle Hoodie**

TCP7939SNU

ONE SIZE, KIDS 8-14  
100% Polyester

Oversized design, soft plush main fabric, rib sleeve cuffs to keep in warmth, sherpa lining for extra warmth, front pocket and hood, TC embroidery on pocket

**NEW TO STOCKLINES**

\$54.95 AUD, \$73.95 NZD

# FOOTWEAR



This Page: Duramax DTC® Trucker Boot TCP18246

Opposite Page: Drayton Boot TCP28509

AW26



 *Thomas Loock*®

AUTUMN/WINTER 2026

WATERPROOF CONSTRUCTION / DURABLE SOLE /  
QUALITY RUBBER / NEOPRENE LINING

**Women's Froggers Cirrus Mid Boot**

T6W28505

6, 7, 8, 9, 10, 11

Rubber & Synthetic Upper / Synthetic Lining / Rubber Outsole

AUS/US C FIT

HEIGHT 25cm (10")

Quality rubber upper, 6mm neoprene with stretch fit collar for easy entry, 100% waterproof, durable rubber sole with cleated design for extra grip

\$119.95 AUD, \$144.95 NZD



NAVY/BLUE



DARK KHAKI



ROSE



BLACK



PALE BLUE/NAVY



RUSSET BROWN



BOTTLE GREEN



ECRU

**Launceston**

T6W28502

6, 7, 8, 9, 10, 11

Rubber Upper / Synthetic Lining / Rubber Outsole

AUS/US C FIT

HEIGHT 28cm (11")

Original hand drawn design, size adjust strap, Thomas Cook signature badge, steel shank

\$69.95 AUD, \$84.95 NZD



DARK KHAKI



**Wynyard**

T6W28503

6, 7, 8, 9, 10, 11

Rubber Upper / Synthetic Lining / Rubber Outsole

AUS/US C FIT

HEIGHT 13cm (5")

Faux fur lining, centre back loop, Thomas Cook signature badge, steel shank

\$59.95 AUD, \$74.95 NZD



FAUX FUR LINING

FAUX FUR LINING (BLACK BOOT ONLY)

**Wynyard Jersey**

T6W28504

6, 7, 8, 9, 10, 11

Rubber Upper / Synthetic Lining / Rubber Outsole

**AUS/US C FIT**    **HEIGHT** 13cm (5")

Jersey lining, centre back loop, Thomas Cook signature badge, steel shank

\$59.95 AUD, \$74.95 NZD



NAVY/PALE BLUE



JERSEY LINING

**Wynyard Kids Jersey**

T6W78132

J10, J11, J12, J13, 1, 2, 3

Rubber Upper / Synthetic Lining / Rubber Outsole

**AUS/UK C FIT**    **HEIGHT** 11cm (4")

Jersey lining, centre back loop, Thomas Cook signature badge, steel shank

\$49.95 AUD, \$59.95 NZD



**Wynyard Kids**

T6W78121

J10, J11, J12, J13, 1, 2, 3

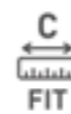
Rubber Upper / Synthetic Lining / Rubber Outsole

**AUS/UK C FIT**

**HEIGHT** 11cm (4")

Faux fur lining, centre back loop, Thomas Cook signature badge, steel shank

\$49.95 AUD, \$59.95 NZD



FAUX FUR LINING

FAUX FUR LINING (BLACK BOOT ONLY)



Wynyard Kids T6W78121 (Bottle Green)



ROSE



BLACK



PALE BLUE/NAVY



BOTTLE GREEN



Wynyard T6W28503 (Bottle Green),  
Wynyard Kids T6W78121 (Pale Blue/Navvy)

**Norfolk Kids**

T6W78122

J10, J11, J12, J13, 1, 2, 3

Synthetic Upper / Synthetic Lining / Synthetic Outsole

**AUS/UK C FIT**

**HEIGHT** 20cm (8")

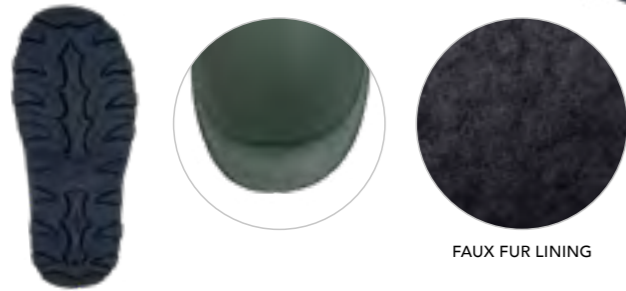
Faux fur lining, Thomas Cook signature tab, Thermo Plastic Rubber (TPR) upper and outsole

\$49.95 AUD, \$59.95 NZD



KHAKI/NAVY

TURQUOISE/FUCHSIA



FAUX FUR LINING

**Norfolk Infant**

T6W78123

J03, J04, J05, J06, J07, J08, J09

Synthetic Upper / Synthetic Lining / Synthetic Outsole

**AUS/UK C FIT**

**HEIGHT** 15cm (6")

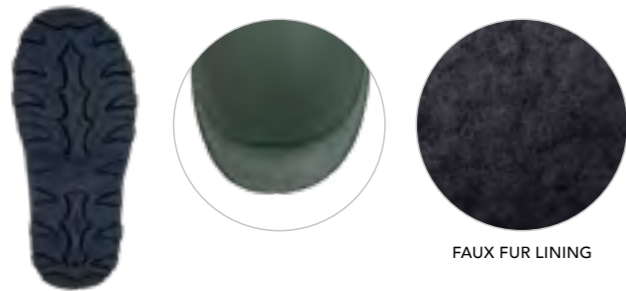
Faux fur lining, Thomas Cook signature tab, Thermo Plastic Rubber (TPR) upper and outsole

\$44.95 AUD, \$54.95 NZD



KHAKI/NAVY

TURQUOISE/FUCHSIA



FAUX FUR LINING

**Women's Luina Boot**

T6W28507

6, 7, 8, 9, 10, 11

Leather Upper / Synthetic Lining / Rubber Outsole

**AUS/US C FIT**

**HEIGHT** 15cm (6")

Leather waterproof upper, faux fur lining, textured innersole for warmth and comfort, waterproof side zip closure for easy access, durable rubber outsole

\$249.95 AUD, \$299.95 NZD



SIDE ZIP



FAUX FUR LINING

CHOCOLATE



**Women's Tullah Boot**

T6W28508

6, 7, 8, 9, 10, 11

Leather Upper / Synthetic Lining / Rubber Outsole

**AUS/US C FIT**

**HEIGHT** 15cm (6")

Leather waterproof upper, faux fur lining, textured innersole for warmth and comfort, waterproof side zip closure for easy access, durable rubber outsole

\$229.95 AUD, \$274.95 NZD



SIDE ZIP



FAUX FUR LINING

TAN



**Women's Drayton Boot**

TCP28509

6, 7, 8, 9, 10, 11

Leather Upper / Leather Lining / Rubber Outsole

AUS/US C FIT



Burnished premium full grain leather upper, leather lining, 5cm (2") stacked heel, padded removable leather innersole, durable heavyweight elastic, refined square toe, leather pull loops, rubber outsole

**NEW TO STOCKLINES**

\$249.95 AUD, \$299.95 NZD



BRUNETTE BROWN



Langley Boot TCP28510

**Women's Chertsey Boot**

T6W28511

6, 7, 8, 9, 10, 11

Leather Upper / Leather Lining / Rubber Outsole

AUS/US C FIT



SIDE ZIP

Premium full grain leather upper, leather lining, 2cm (3/4") stacked heel, padded removable leather innersole, double zip for easy access, rubber outsole, refined round toe

\$219.95 AUD, \$259.95 NZD



BRANDY

**Women's Langley Boot**

TCP28510

6, 7, 8, 9, 10, 11

Leather Upper / Leather Lining / Rubber Outsole

AUS/US C FIT



Premium full grain leather upper, leather lining, padded removable leather innersole, lightweight durable EVA outsole, durable heavyweight elastic, leather pull loops

**NEW TO STOCKLINES**

\$229.95 AUD, \$274.95 NZD



BRANDY



**Women's Weald Boot**

TCP28512

6, 7, 8, 9, 10, 11

Leather Upper / Leather Lining / Rubber Outsole

**AUS/US C FIT**

Premium full grain leather upper, leather lining, 2cm (3/4") stacked heel, padded removable leather innersole, durable heavyweight elastic, rubber outsole, refined round toe

**NEW TO STOCKLINES**

\$219.95 AUD, \$259.95 NZD



BRANDY



**Women's Crawley Boot**

T6W28513

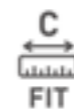
5, 6, 7, 8, 9, 10

Leather Upper / Leather & Synthetic Lining / Rubber Outsole

**AUS/US C FIT**

Grained leather upper, leather and breathable moisture wicking lining, leather innersole combined with memory foam for comfort and durability, side zip for easy access, rubber outsole, 4.5cm (1 3/4") block heel

\$179.95 AUD, \$214.95 NZD



SIDE ZIP



CHESTNUT BROWN



**Women's Milford Boot**

T6W28514

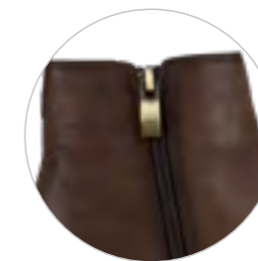
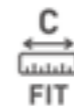
5, 6, 7, 8, 9, 10

Leather Upper / Leather & Synthetic Lining / Rubber Outsole

**AUS/US C FIT**

Grained leather upper, leather and breathable moisture wicking lining, leather innersole combined with memory foam for comfort and durability, side zip for easy access, rubber outsole, 4.5cm (1 3/4") block heel

\$179.95 AUD, \$214.95 NZD

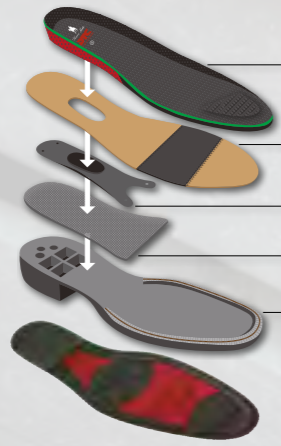


SIDE ZIP



CHOCOLATE





**Footbed** – Multi density footbed provides extra support with gel padding for long lasting comfort and shock reduction. Polisport® and velvet mesh dissipates moisture and reduces odours.

**Insole** – Creates an instant 'broken-in' feel with high quality Texon® Cellulose board which is super flexible but won't allow twisting or heel slippage.

**Shank** – Designed for stability and resistance to sideways rolling action. The Y-shaped shank gives great support to your foot.

**Shank Board** – Provides a rigid fibre board base for the shank, and full width stability at heel seat area.

**Outsole** – Durable high quality rubber tread allows forward motion flexibility and is slip resistant. Extra longer wearing with high resistance to oils, acidic waste and manure.

**Men's Duramax DTC® Trucker Boot**  
TCP18246

6, 7, 7½, 8, 8½, 9, 9½, 10, 10½, 11, 12, 13

Leather Upper / Leather Lining / Rubber Sole

AUS/UK EEE FIT HEIGHT 20cm (8")



OILY BROWN

DTC® – Unique shank & sole system, full grain leather upper, full leather lining, multi density removable footbed, durable rubber sole, genuine welt construction

NEW TO STOCKLINES

\$349.95 AUD, \$419.95 NZD



**Men's Duramax DTC® Dogger Boot**  
TCP18247

7, 7½, 8, 8½, 9, 9½, 10, 10½, 11, 12, 13

Leather Upper / Synthetic Lining / Rubber Sole

AUS/UK EEE FIT HEIGHT 25cm (10")



PULL UP HANDLE

OILY BROWN

DTC® – Unique shank & sole system, full grain leather upper, moisture wicking padded lining, pull up handles for easy access, multi density removable footbed, durable rubber sole, genuine welt construction

NEW TO STOCKLINES

\$359.95 AUD, \$429.95 NZD





**Men's Chris Leather Comfort Shoe**

TCP18248

7, 8, 9, 10, 11, 12

Leather Upper / Synthetic Lining / Rubber Sole

**AUS/UK E FIT**

Full grain leather upper, breathable moisture-wicking lining, cupped comfort memory foam innersole, lightweight EVA midsole, durable rubber outsole

**NEW TO STOCKLINES**

\$149.95 AUD, \$179.95 NZD



DARK BROWN

**Women's Brave Work Boot**

TCP28506

6, 7, 8, 9, 10, 11

Leather Upper / Synthetic Lining / Synthetic Outsole

**AUS/US D FIT**



Full grain leather upper, moisture wicking synthetic lining, removable polyurethane comfort innersole, PU/TPU midsole oil, acid and organic fat resistant, outsole heat resistant to temperatures up to 130°C, slip resistant

**NEW TO STOCKLINES**

\$179.95 AUD, \$214.95 NZD



BROWN



**DUX-BAK<sup>®</sup>**  
BY THOMAS COOK



This Page: Miles Thermal Long Sleeve Shirt D6W1116200, Brad Thermal Comfort Waist Jean 32" Leg T6W1226102

Opposite Page: Hunter Thermal Long Sleeve Shirt D6W1116205, Brad Thermal Comfort Waist Jean 32" Leg T6W1226102

AW26



**DUX-BAK<sup>®</sup>**  
BY THOMAS COOK

AUTUMN/WINTER 2026



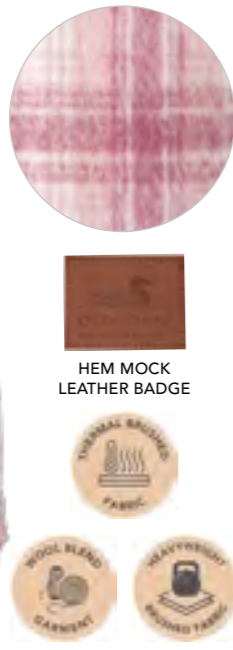
PINK

**Women's Elk Overshirt**  
D6W2103059

XS, S, M, L, XL, XXL, 3XL  
70% Polyester / 30% Wool  
Yarn Dyed Check,  
Thermal Brushed

Heavyweight wool blend thermal overshirt, feels good against the skin as well as tough and resistant against wind, oversized front chest pockets, side seam pockets, long shirt tail, horseman embroidery on chest pocket

\$169.95 AUD, \$204.95 NZD



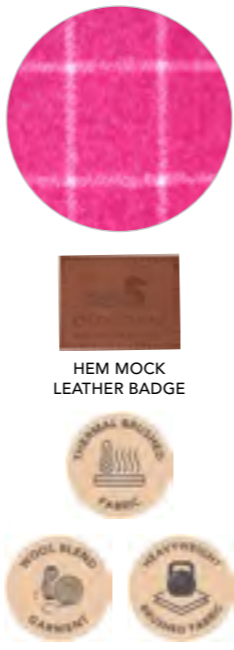
HOT PINK

**Women's Jazz Thermal Long Sleeve Shirt**  
D6W2150111

8, 10, 12, 14, 16, 18, 20, 22  
60% Wool / 40% Polyester  
Yarn Dyed Check,  
Thermal Brushed

Premium wool blend yarn dyed check with thermal quality brushing, 2-pocket long sleeve shirt, long shirt tail, back pleat for comfort and movement

\$119.95 AUD, \$146.95 NZD



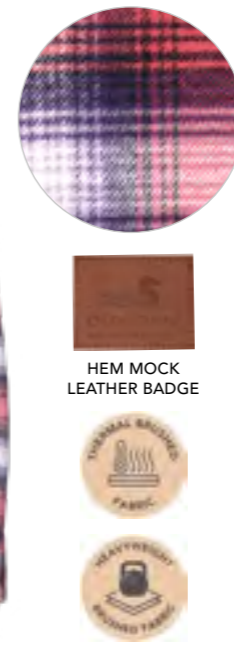
CORAL

**Women's Nila Thermal Long Sleeve Shirt**  
D6W2150112

8, 10, 12, 14, 16, 18, 20, 22  
100% Cotton Yarn Dyed  
Check, Thermal Brushed

Premium yarn dyed check with thermal quality brushing, 2-pocket long sleeve shirt, long shirt tail, back pleat for comfort and movement

\$89.95 AUD, \$107.95 NZD



PURPLE/WHITE

**Women's Joyce Thermal Long Sleeve Shirt**  
D6W2150115

8, 10, 12, 14, 16, 18, 20, 22  
100% Cotton Yarn Dyed  
Check, Thermal Brushed

Premium yarn dyed check with thermal quality brushing, 2-pocket long sleeve shirt, long shirt tail, back pleat for comfort and movement

\$79.95 AUD, \$98.95 NZD



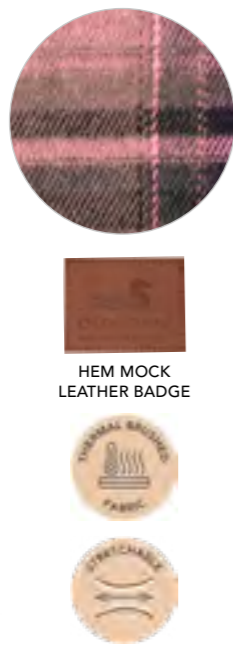
GREEN/PINK

**Women's Ahri Thermal Long Sleeve Shirt**  
D6W2150114

8, 10, 12, 14, 16, 18, 20, 22  
60% Polyester / 35% Viscose  
/ 5% Elastane Yarn Dyed  
Check, Thermal Brushed

Premium viscose blend yarn dyed check with thermal quality brushing and stretch, 2-pocket long sleeve shirt, long shirt tail, back pleat for comfort and movement

\$79.95 AUD, \$98.95 NZD



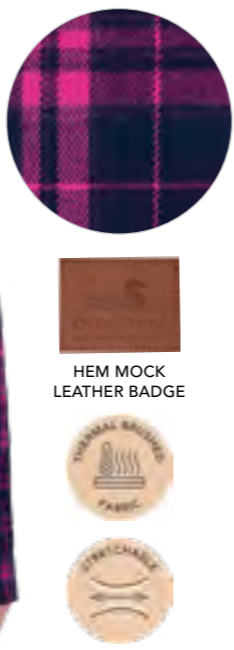
PINK/NAVY

**Women's Sybel Thermal Long Sleeve Shirt**  
D6W2150116

8, 10, 12, 14, 16, 18, 20, 22  
60% Polyester / 35% Viscose  
/ 5% Elastane Yarn Dyed  
Check, Thermal Brushed

Premium yarn dyed check with thermal quality brushing and stretch, 2-pocket long sleeve shirt, long shirt tail, back pleat for comfort and movement

\$79.95 AUD, \$98.95 NZD





STEEL BLUE

**Men's Amir Thermal Long Sleeve Shirt**

D6W1116203

XS, S, M, L, XL, XXL, 3XL, 4XL  
60% Wool / 40% Polyester  
Yarn Dyed Check,  
Thermal Brushed

Premium wool blend yarn dyed check with thermal quality brushing, 2-pocket long sleeve shirt, one with pen holder, long shirt tail, back pleat for comfort and movement, removable collar stays

\$119.95 AUD, \$146.95 NZD



GREEN/STEEL

**Men's Jace Thermal Long Sleeve Shirt**

D6W1116204

XS, S, M, L, XL, XXL, 3XL, 4XL  
70% Cotton / 30% Polyester  
Yarn Dyed Check,  
Thermal Brushed

Premium yarn dyed check with thermal quality brushing, 2-pocket long sleeve shirt, one with pen holder, long shirt tail, back pleat for comfort and movement, removable collar stays

\$79.95 AUD, \$98.95 NZD



NAVY/DARK TAN

**Men's Hunter Thermal Long Sleeve Shirt**

D6W1116205

XS, S, M, L, XL, XXL, 3XL, 4XL  
100% Cotton Yarn Dyed  
Check, Thermal Brushed

Premium yarn dyed check with thermal quality brushing, 2-pocket long sleeve shirt, one with pen holder, long shirt tail, back pleat for comfort and movement, removable collar stays

\$79.95 AUD, \$98.95 NZD



NAVY/TEAL

**Men's Camden Thermal Long Sleeve Shirt**

D6W1116206

XS, S, M, L, XL, XXL, 3XL, 4XL  
100% Cotton Yarn Dyed  
Check, Thermal Brushed

Premium yarn dyed check with thermal quality brushing, 2-pocket long sleeve shirt, one with pen holder, long shirt tail, back pleat for comfort and movement, removable collar stays

\$69.95 AUD, \$84.95 NZD



NAVY/TEAL

**Men's Miles Thermal Long Sleeve Shirt**

D6W1116200

XS, S, M, L, XL, XXL, 3XL, 4XL  
100% Cotton Yarn Dyed  
Check, Thermal Brushed

Premium yarn dyed check with thermal quality brushing, 2-pocket long sleeve shirt, one with pen holder, long shirt tail, back pleat for comfort and movement, removable collar stays

\$69.95 AUD, \$84.95 NZD



KHAKI/TAN

**Men's Micah Thermal Long Sleeve Shirt**

D6W1116202

XS, S, M, L, XL, XXL, 3XL, 4XL  
100% Cotton Yarn Dyed  
Check, Thermal Brushed

Premium yarn dyed check with thermal quality brushing, 2-pocket long sleeve shirt, one with pen holder, long shirt tail, back pleat for comfort and movement, removable collar stays

\$89.95 AUD, \$107.95 NZD





PINK

**Girl's Elk Overshirt**

D6W5709059

4, 6, 8, 10, 12, 14  
70% Polyester / 30% Wool  
Yarn Dyed Check,  
Thermal Brushed

Heavyweight wool blend thermal overshirt, feels good against the skin as well as tough and resistant against wind, oversized front chest pockets, side seam pockets, long shirt tail

\$119.95 AUD, \$158.95 NZD



PINK/NAVY

**Kid's Sybel Thermal Long Sleeve Shirt**

D6W7115116

4, 6, 8, 10, 12, 14  
60% Polyester / 35% Viscose / 5% Elastane Yarn Dyed Check, Thermal Brushed

Premium viscose blend yarn dyed check with thermal quality brushing and stretch, 2-pocket long sleeve shirt, long shirt tail, back pleat for comfort and movement

\$44.95 AUD, \$61.95 NZD



PINK/PURPLE

**Kid's Millie Thermal Long Sleeve Shirt**

D6W7115117

4, 6, 8, 10, 12, 14  
100% Cotton Yarn Dyed Check, Thermal Brushed

Premium yarn dyed check with thermal quality brushing, 2-pocket long sleeve shirt, long shirt tail, back pleat for comfort and movement

\$44.95 AUD, \$61.95 NZD



NAVY/TEAL

**Kid's Camden Thermal Long Sleeve Shirt**

D6W7115206

4, 6, 8, 10, 12, 14  
100% Cotton Yarn Dyed Check, Thermal Brushed

Premium yarn dyed check with thermal quality brushing, 2-pocket long sleeve shirt, long shirt tail, back pleat for comfort and movement

\$44.95 AUD, \$61.95 NZD



# HARD SLOG®

by *Thomas Cook*®



This Page: Kid's Suzie Half Placket Long Sleeve Shirt H6W7101166, Heather Boot Cut Jean T6W5200143

*AW26*

## DO THE HARD YARDS

Registered and created by  
Thomas Cook Boot & Clothing Co. in 2005,  
**Hard Slog®** is designed for putting in the hard yards.

Our range is made with durable materials to withstand tough Australian outdoor conditions, while also being comfortable and breathable for all-day wear. Our aim is to keep our farmers protected and comfortable in the harsh Australian sun while they're out in the fields and farms.

With a full range of bright colours and practical enough to dress the whole family, **Hard Slog®** Workwear provides the perfect balance of quality, comfort, safety, and style.

**HARD SLOG®**  
by *Thomas Cook*®



PINK/TAN

**Women's Ori Thermal Long Sleeve Shirt**

H6W2150194

8, 10, 12, 14, 16, 18, 20, 22  
100% Polyester Yarn Dyed Check, Thermal Brushed

Yarn dyed check with thermal quality brushing, full placket 2-pocket long sleeve shirt, one with pen holder, logo buttons

\$59.95 AUD, \$70.95 NZD



GREEN/TAN

**Women's Elle Thermal Long Sleeve Shirt**

H6W2150195

8, 10, 12, 14, 16, 18, 20, 22  
100% Polyester Yarn Dyed Check, Thermal Brushed

Yarn dyed check with thermal quality brushing, full placket 2-pocket long sleeve shirt, one with pen holder, logo buttons

\$59.95 AUD, \$70.95 NZD



PINK

**Women's Cleo Half Placket Long Sleeve Shirt**

H6W2101170

8, 10, 12, 14, 16, 18, 20, 22  
100% Cotton Print

Half placket 2-pocket long sleeve shirt, one with pen holder, logo buttons, contrast inside collar stand

\$59.95 AUD, \$70.95 NZD



BLUE/MULTI

**Women's Trixie Half Placket Long Sleeve Shirt**

H6W2101172

8, 10, 12, 14, 16, 18, 20, 22  
100% Cotton Print

Half placket 2-pocket long sleeve shirt, one with pen holder, logo buttons, contrast inside collar stand

\$59.95 AUD, \$70.95 NZD



PINK

**Women's Rose Thermal Long Sleeve Shirt**

H6W2150196

8, 10, 12, 14, 16, 18, 20, 22  
80% Polyester / 20% Cotton Yarn Dyed Check, Thermal Brushed

Yarn dyed check with thermal quality brushing, full placket 2-pocket long sleeve shirt, one with pen holder, logo buttons

\$59.95 AUD, \$70.95 NZD



HOT PINK

**Women's Giselle Half Placket Long Sleeve Shirt**

H6W2101169

8, 10, 12, 14, 16, 18, 20, 22  
100% Cotton Print

Half placket 2-pocket long sleeve shirt, one with pen holder, logo buttons, contrast inside collar stand

\$59.95 AUD, \$70.95 NZD



PINK/YELLOW

**Women's Samira Half Placket Long Sleeve Shirt**

H6W2101173

8, 10, 12, 14, 16, 18, 20, 22  
100% Cotton Print

Half placket 2-pocket long sleeve shirt, one with pen holder, logo buttons, contrast inside collar stand

\$59.95 AUD, \$70.95 NZD



BLUE

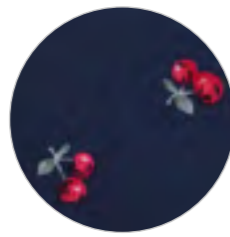
**Women's Alice Half Placket Long Sleeve Shirt**

H6W2101174

8, 10, 12, 14, 16, 18, 20, 22  
100% Cotton Print

Half placket 2-pocket long sleeve shirt, one with pen holder, logo buttons, contrast inside collar stand

\$59.95 AUD, \$70.95 NZD



CONTRAST SLEEVE CUFF

DARK NAVY

**Women's Cherry Half Placket Long Sleeve Shirt**

Half placket 2-pocket long sleeve shirt, one with pen holder, logo buttons, contrast inside collar stand

H6W2101175

8, 10, 12, 14, 16, 18, 20, 22  
100% Cotton Print

\$59.95 AUD, \$70.95 NZD



CONTRAST SLEEVE CUFF

LAVENDER

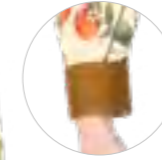
**Women's Ginny Half Placket Long Sleeve Shirt**

Half placket 2-pocket long sleeve shirt, one with pen holder, logo buttons, contrast print inside collar stand

H6W2101176

8, 10, 12, 14, 16, 18, 20, 22  
100% Cotton

\$59.95 AUD, \$70.95 NZD



CONTRAST SLEEVE CUFF

GREEN

**Women's Zia Half Placket Long Sleeve Shirt**

Half placket 2-pocket long sleeve shirt, one with pen holder, logo buttons, contrast inside collar stand

H6W2101180

8, 10, 12, 14, 16, 18, 20, 22  
100% Cotton Print

\$59.95 AUD, \$70.95 NZD



CONTRAST SLEEVE CUFF

PINK

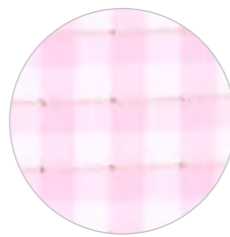
**Women's Rachel Full Placket Long Sleeve Shirt**

Full placket 2-pocket long sleeve shirt, one with pen holder, logo buttons, contrast print inside collar stand

H6W2149192

8, 10, 12, 14, 16, 18, 20, 22  
100% Cotton  
Yarn Dyed Check

\$59.95 AUD, \$70.95 NZD



CONTRAST SLEEVE CUFF

PINK

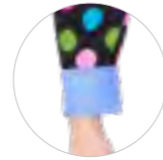
**Women's Clara Half Placket Long Sleeve Shirt**

Half placket 2-pocket long sleeve shirt, one with pen holder, gingham with metallic yarn feature, logo buttons, contrast print inside collar stand

H6W2101177

8, 10, 12, 14, 16, 18, 20, 22  
98% Cotton / 2% Metallic  
Yarn Dyed Check

\$59.95 AUD, \$70.95 NZD



CONTRAST SLEEVE CUFF

MULTI

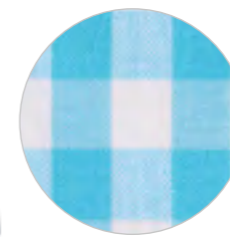
**Women's Rena Half Placket Long Sleeve Shirt**

Half placket 2-pocket long sleeve shirt, one with pen holder, logo buttons, contrast inside collar stand

H6W2101178

8, 10, 12, 14, 16, 18, 20, 22  
100% Cotton Print

\$59.95 AUD, \$70.95 NZD



CONTRAST SLEEVE CUFF

BLUE/WHITE

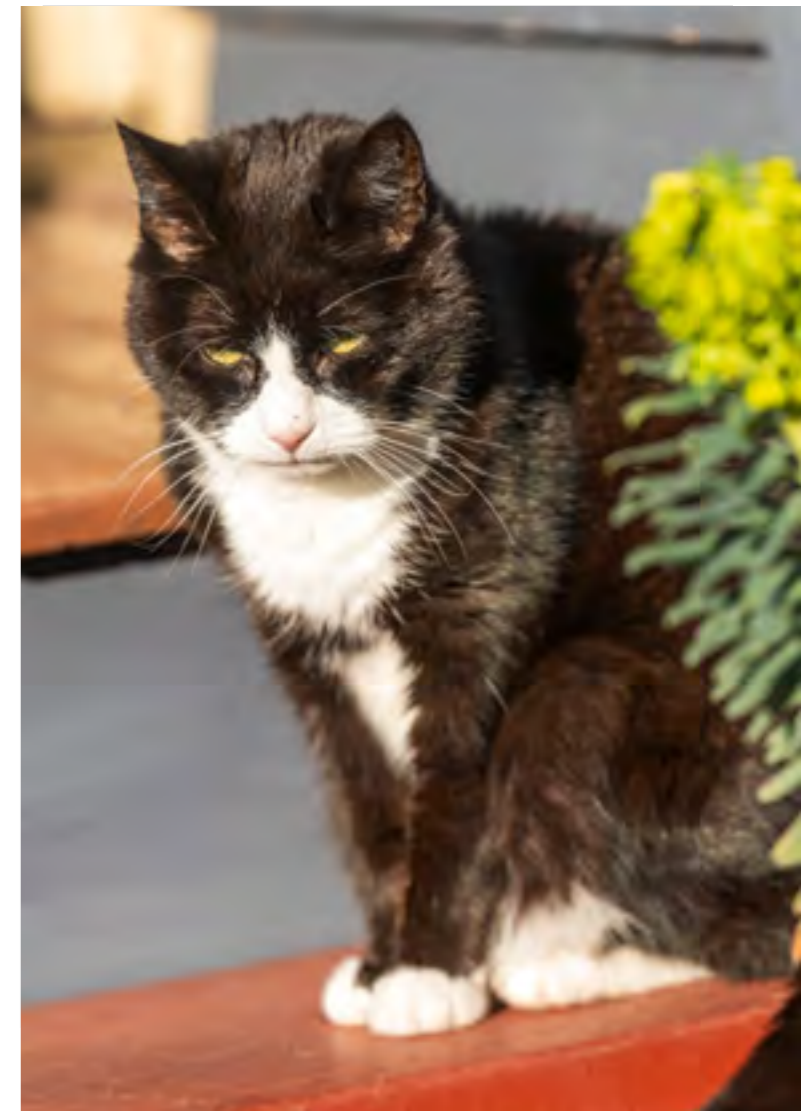
**Women's Fay Full Placket Long Sleeve Shirt**

Full placket 2-pocket long sleeve shirt, one with pen holder, logo buttons, contrast print inside collar stand

H6W2149193

8, 10, 12, 14, 16, 18, 20, 22  
100% Cotton  
Yarn Dyed Check

\$59.95 AUD, \$70.95 NZD





TAN/LT BLUE

**Men's Victor Thermal Long Sleeve Shirt**

H6W1116283

XS, S, M, L, XL, XXL, 3XL, 4XL  
100% Polyester Yarn Dyed Check, Thermal Brushed

Yarn dyed check with thermal quality brushing, full placket 2-pocket long sleeve shirt, one with pen holder, logo buttons

\$59.95 AUD, \$70.95 NZD



BLACK/TAN

**Men's King Thermal Long Sleeve Shirt**

H6W1116207

XS, S, M, L, XL, XXL, 3XL, 4XL  
100% Polyester Yarn Dyed Check, Thermal Brushed

Yarn dyed check with thermal quality brushing, full placket 2-pocket long sleeve shirt, one with pen holder, logo buttons

\$59.95 AUD, \$70.95 NZD



BLACK/BLUE

**Men's Blake Half Placket Long Sleeve Shirt**

H6W1126186

XS, S, M, L, XL, XXL, 3XL, 4XL  
100% Cotton Print

Half placket 2-pocket long sleeve shirt, one with pen holder, logo buttons

\$65.95 AUD, \$79.95 NZD



NAVY/BLUE

**Men's Holden Half Placket Long Sleeve Shirt**

H6W1126188

XS, S, M, L, XL, XXL, 3XL, 4XL  
100% Cotton Print

Half placket 2-pocket long sleeve shirt, one with pen holder, logo buttons

\$65.95 AUD, \$79.95 NZD



ROYAL/BLACK

**Men's Gael Thermal Long Sleeve Shirt**

H6W1116284

XS, S, M, L, XL, XXL, 3XL, 4XL  
65% Cotton / 35% Polyester Yarn Dyed Check, Thermal Brushed

Yarn dyed check with thermal quality brushing, full placket 2-pocket long sleeve shirt, one with pen holder, logo buttons

\$59.95 AUD, \$70.95 NZD



NAVY/WHITE

**Men's Alden Half Placket Long Sleeve Shirt**

H6W1126185

XS, S, M, L, XL, XXL, 3XL, 4XL  
100% Cotton Yarn Dyed Check

Half placket 2-pocket long sleeve shirt, one with pen holder, logo buttons

\$65.95 AUD, \$79.95 NZD



NAVY/BLACK

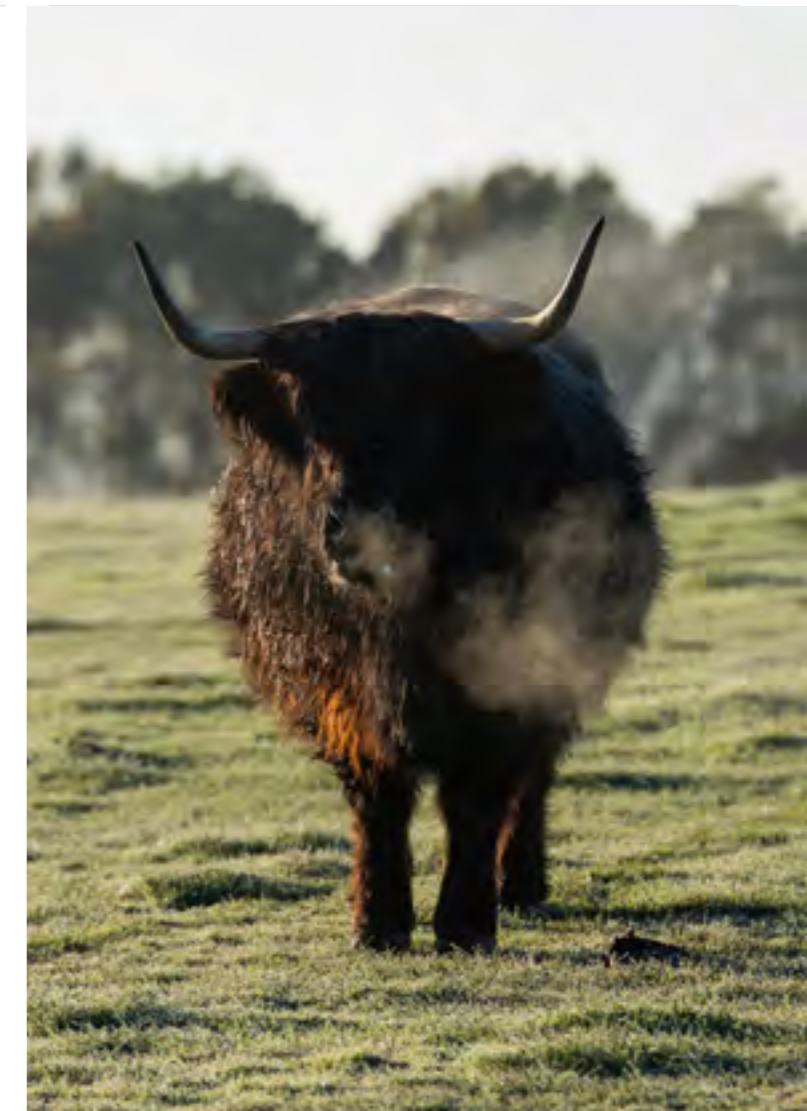
**Men's Nash Half Placket Long Sleeve Shirt**

H6W1126189

XS, S, M, L, XL, XXL, 3XL, 4XL  
100% Cotton Yarn Dyed Check

Half placket 2-pocket long sleeve shirt, one with pen holder, logo buttons

\$65.95 AUD, \$79.95 NZD





PINK/TAN

**Kid's Ori Thermal Long Sleeve Shirt**

H6W7115194

4, 6, 8, 10, 12, 14  
100% Polyester Yarn Dyed Check, Thermal Brushed

Yarn dyed check with thermal quality brushing, full placket 2-pocket long sleeve shirt, logo buttons

\$39.95 AUD, \$52.95 NZD



BLUE

**Kid's Iva Half Placket Long Sleeve Shirt**

H6W7101165

4, 6, 8, 10, 12, 14  
100% Cotton Print

Half placket 2-pocket long sleeve shirt, logo buttons, contrast inside collar stand

\$44.95 AUD, \$61.95 NZD



PINK

**Kid's Lily Half Placket Long Sleeve Shirt**

H6W7101168

4, 6, 8, 10, 12, 14  
100% Cotton Print

Half placket 2-pocket long sleeve shirt, logo buttons, contrast inside collar stand

\$44.95 AUD, \$61.95 NZD



HOT PINK

**Kid's Giselle Half Placket Long Sleeve Shirt**

H6W7101169

4, 6, 8, 10, 12, 14  
100% Cotton Print

Half placket 2-pocket long sleeve shirt, logo buttons, contrast inside collar stand

\$44.95 AUD, \$61.95 NZD



LIGHT BLUE

**Kid's Suzie Half Placket Long Sleeve Shirt**

H6W7101166

4, 6, 8, 10, 12, 14  
100% Cotton Print

Half placket 2-pocket long sleeve shirt, logo buttons, contrast inside collar stand

\$44.95 AUD, \$61.95 NZD



PINK

**Kid's Daisy Half Placket Long Sleeve Shirt**

H6W7101167

4, 6, 8, 10, 12, 14  
100% Cotton Print

Half placket 2-pocket long sleeve shirt, logo buttons, contrast inside collar stand

\$44.95 AUD, \$61.95 NZD



PINK

**Kid's Cleo Half Placket Long Sleeve Shirt**

H6W7101170

4, 6, 8, 10, 12, 14  
100% Cotton Print

Half placket 2-pocket long sleeve shirt, logo buttons, contrast inside collar stand

\$44.95 AUD, \$61.95 NZD



Kid's Daisy Half Placket Long Sleeve Shirt H6W7101167, Heather Boot Cut Jean T6W5200143



BLACK/TAN

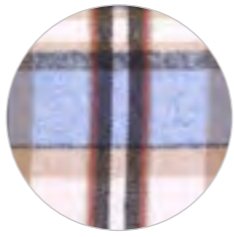
**Kid's King Thermal Long Sleeve Shirt**

H6W7115207

4, 6, 8, 10, 12, 14  
100% Polyester Yarn Dyed Check, Thermal Brushed

Yarn dyed check with thermal quality brushing, full placket 2-pocket long sleeve shirt, logo buttons

\$39.95 AUD, \$52.95 NZD



TAN/LT BLUE

**Kid's Victor Thermal Long Sleeve Shirt**

H6W7115283

4, 6, 8, 10, 12, 14  
100% Polyester Yarn Dyed Check, Thermal Brushed

Yarn dyed check with thermal quality brushing, full placket 2-pocket long sleeve shirt, logo buttons

\$39.95 AUD, \$52.95 NZD



NAVY/BLACK

**Kid's Nash Half Placket Long Sleeve Shirt**

H6W7101189

4, 6, 8, 10, 12, 14  
100% Cotton Yarn Dyed Check

Half placket 2-pocket long sleeve shirt, logo buttons

\$44.95 AUD, \$61.95 NZD



Nash Half Placket Long Sleeve Shirt H6W7101189, Bass Stretch Jean - Regular TCP3202072



NAVY/WHITE

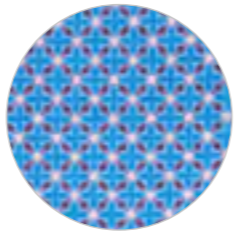
**Kid's Alden Half Placket Long Sleeve Shirt**

H6W7101185

4, 6, 8, 10, 12, 14  
100% Cotton Yarn Dyed Check

Half placket 2-pocket long sleeve shirt, logo buttons

\$44.95 AUD, \$61.95 NZD



NAVY/BLUE

**Kid's Holden Half Placket Long Sleeve Shirt**

H6W7101188

4, 6, 8, 10, 12, 14  
100% Cotton Print

Half placket 2-pocket long sleeve shirt, logo buttons

\$44.95 AUD, \$61.95 NZD

**AW26 PROMOTIONAL ITEMS**



**Winter 2026 Product Guide A4**

T6WPGMAR26

Size: 21 x 29.7cm  
Paper



**Winter 2026 Lifestyle Poster A2**

T6WPOSMA26

Size: 42 x 59.4cm  
Paper



Thomas Cook®  
BOOT & CLOTHING CO.

4TH GENERATION AUSTRALIAN FAMILY  
OWNED COMPANY - CRAFTSMEN SINCE 1924



DUX-BAK®  
BY THOMAS COOK

HARD SLOG®  
by Thomas Cook

froggers®  
BY THOMAS COOK®



T6WPGMAR26



9 348537 823398

Thomas Cook Boot & Clothing Co. 8/100 Station Street, Nunawading, Victoria 3131 Australia

P 03 8872 7272 F 03 8872 7273 E sales@tcbac.com  facebook.com/ThomasCookAustralia |  thomascookclothing

thomascook.com.au | 4TH GENERATION AUSTRALIAN FAMILY OWNED COMPANY - CRAFTSMEN SINCE 1924

